

Krankenhausvergleichs- Report

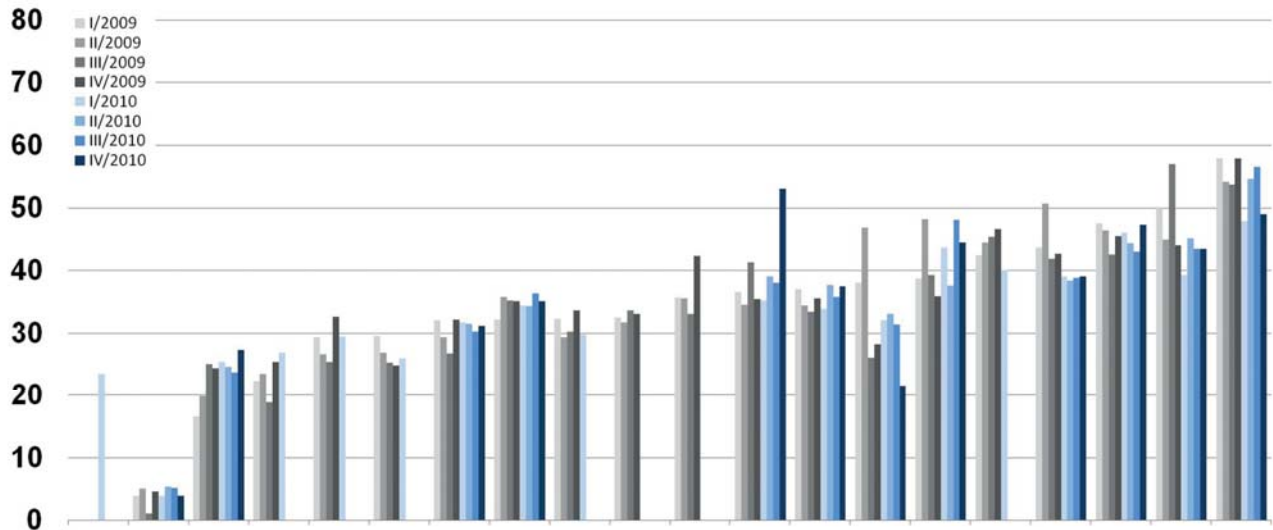
Jahre 2009 und 2010

Nur zum internen Gebrauch!



Antibiotika gesamt

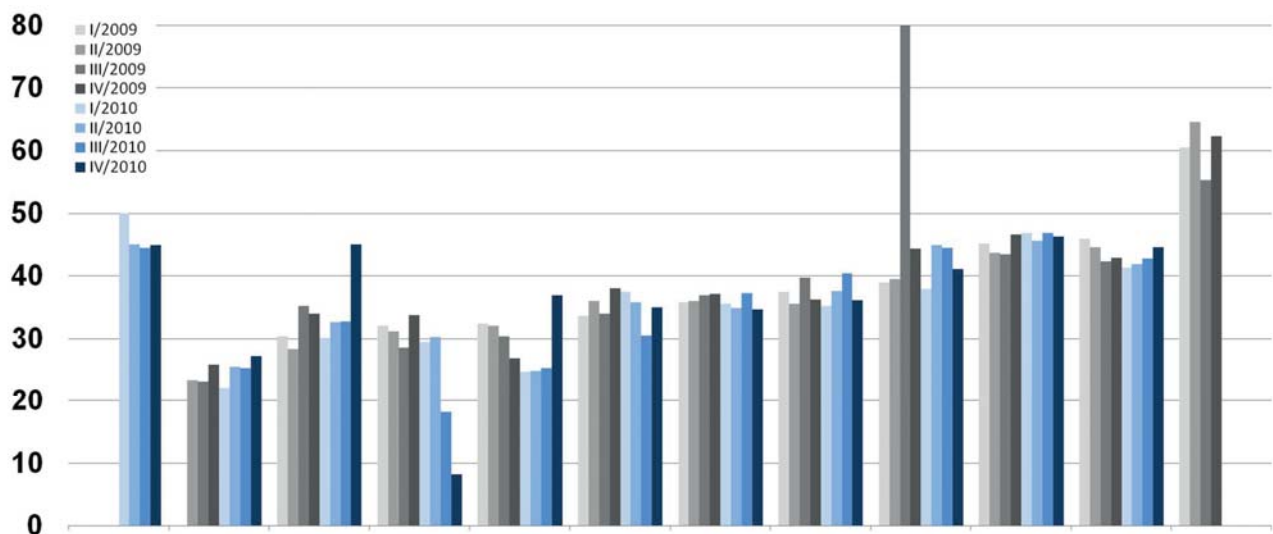
RDD/100



Krankenhaus gesamt, < 400 Betten

Antibiotika gesamt

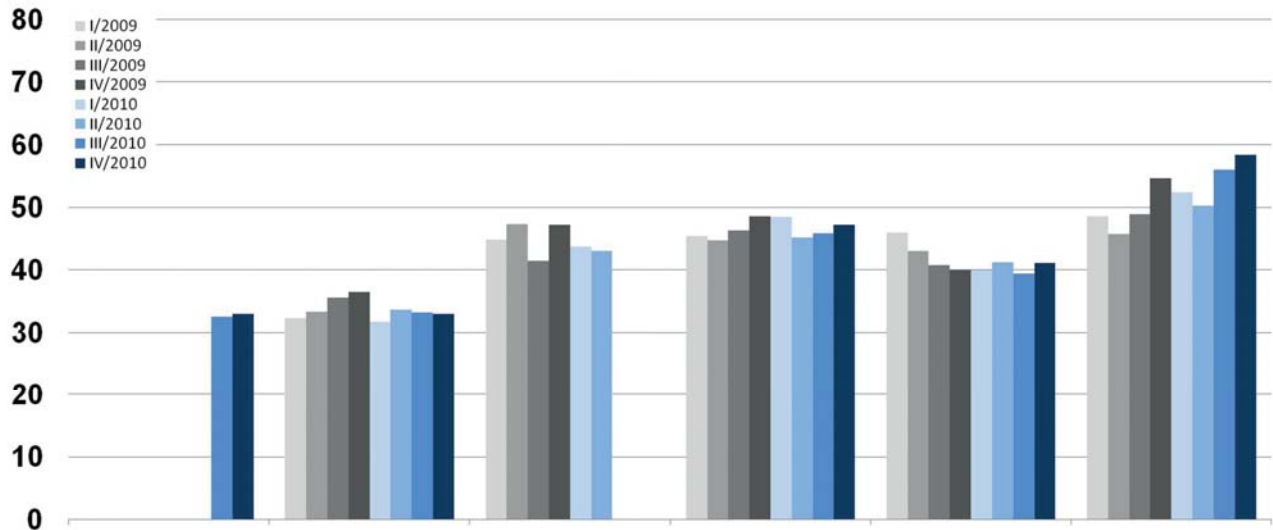
RDD/100



Krankenhaus gesamt, 400-800 Betten

Antibiotika gesamt

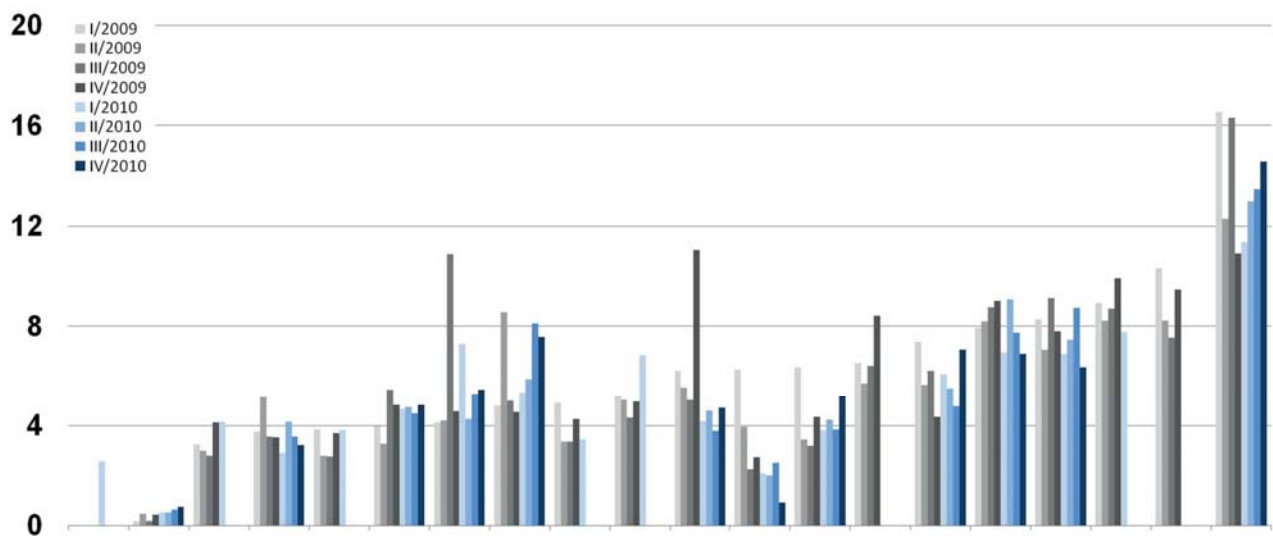
RDD/100



Krankenhaus gesamt, > 800 Betten

Fluorchinolone

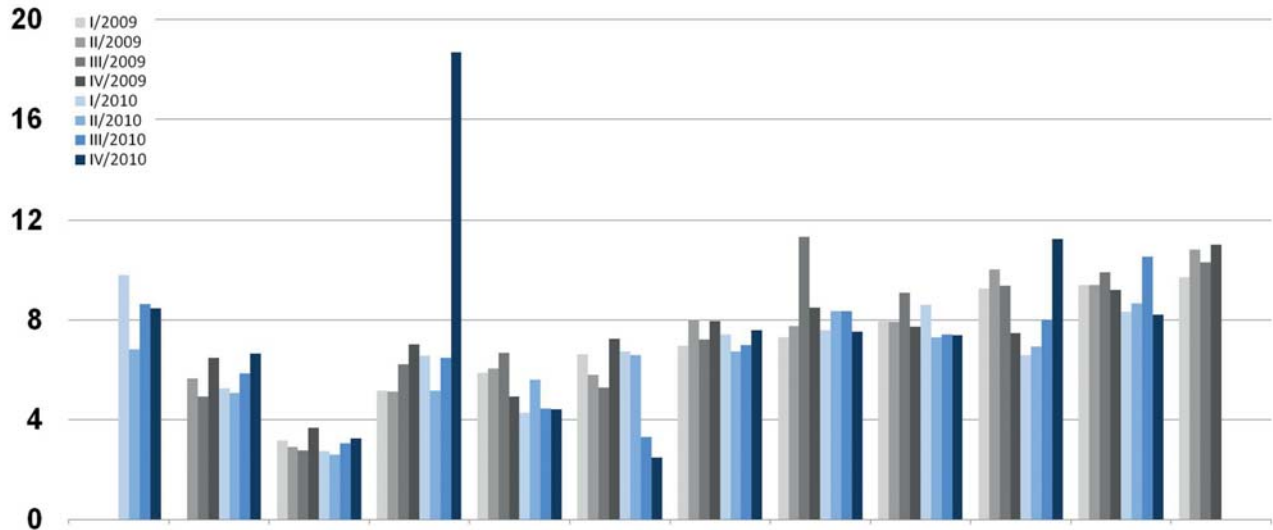
RDD/100



Krankenhaus gesamt, < 400 Betten

Fluorchinolone

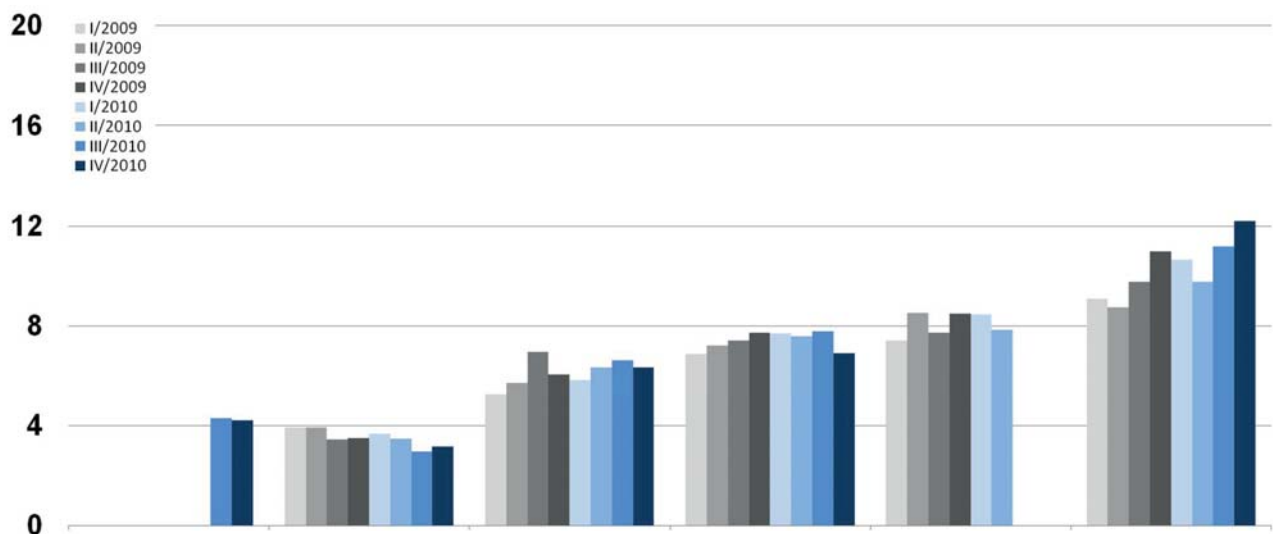
RDD/100



Krankenhaus gesamt, 400-800 Betten

Fluorchinolone

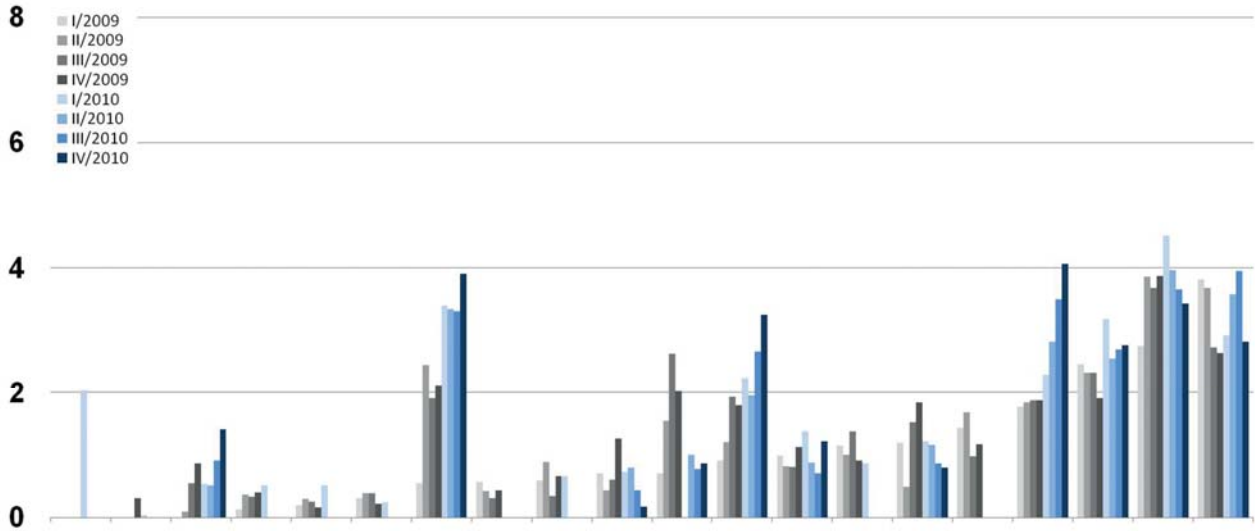
RDD/100



Krankenhaus gesamt, > 800 Betten

Breitspektrumpenicilline

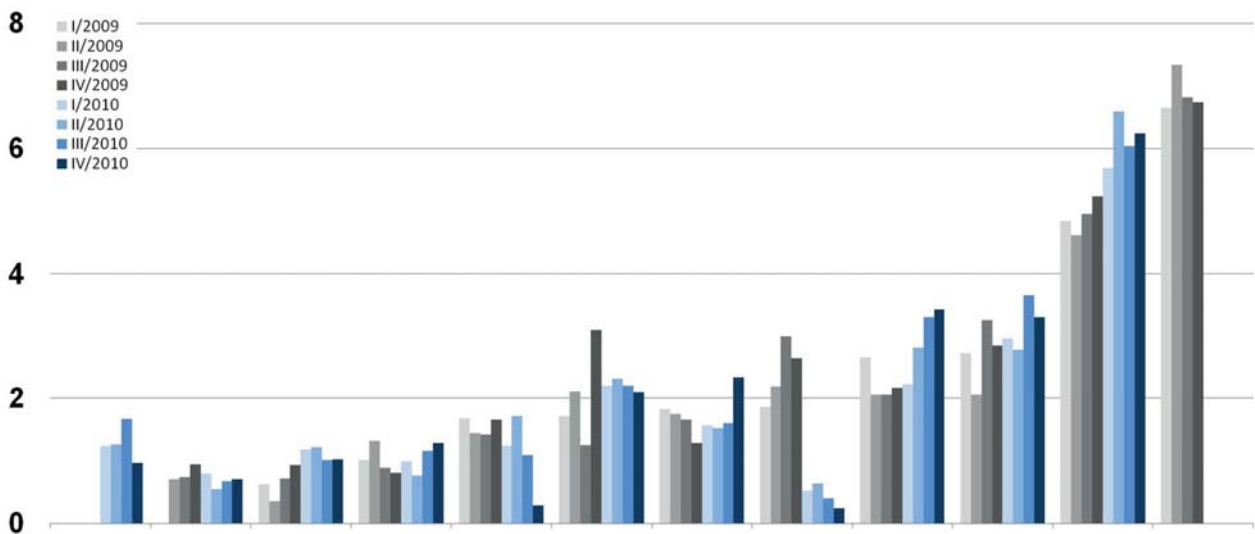
RDD/100



Krankenhaus gesamt, < 400 Betten

Breitspektrumpenicilline

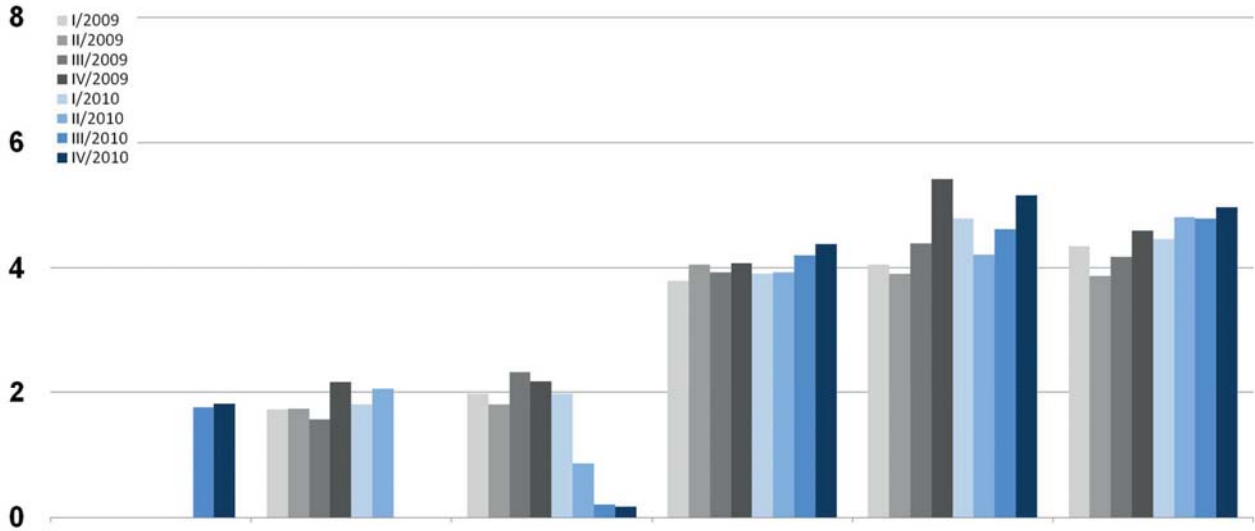
RDD/100



Krankenhaus gesamt, 400-800 Betten

Breitspektrumpenicilline

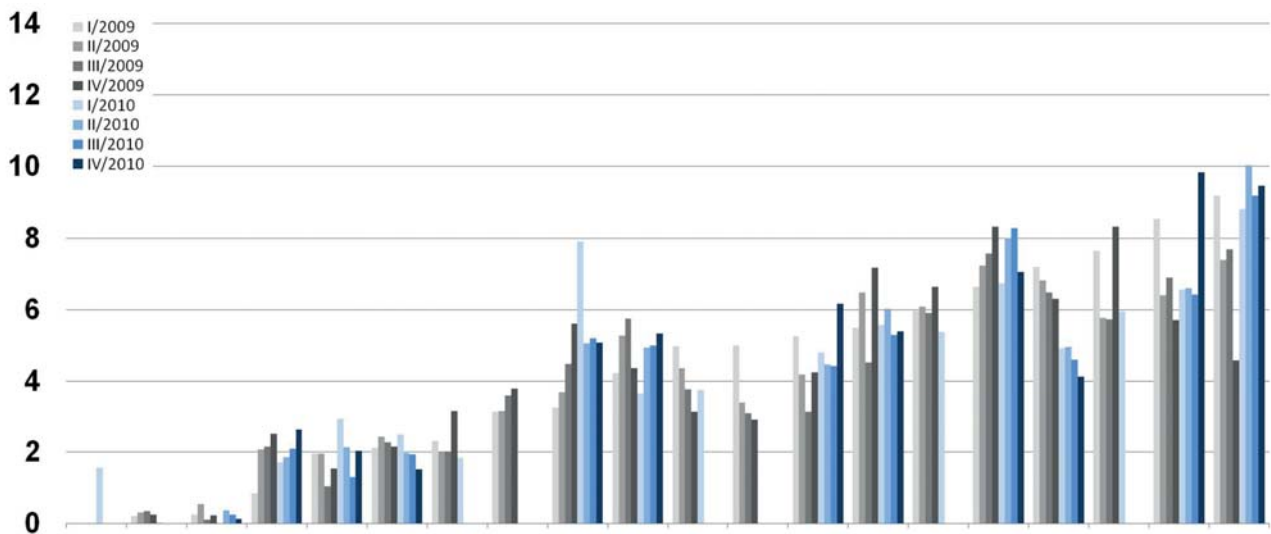
RDD/100



Krankenhaus gesamt, > 800 Betten

3. Generations-Cephalosporine

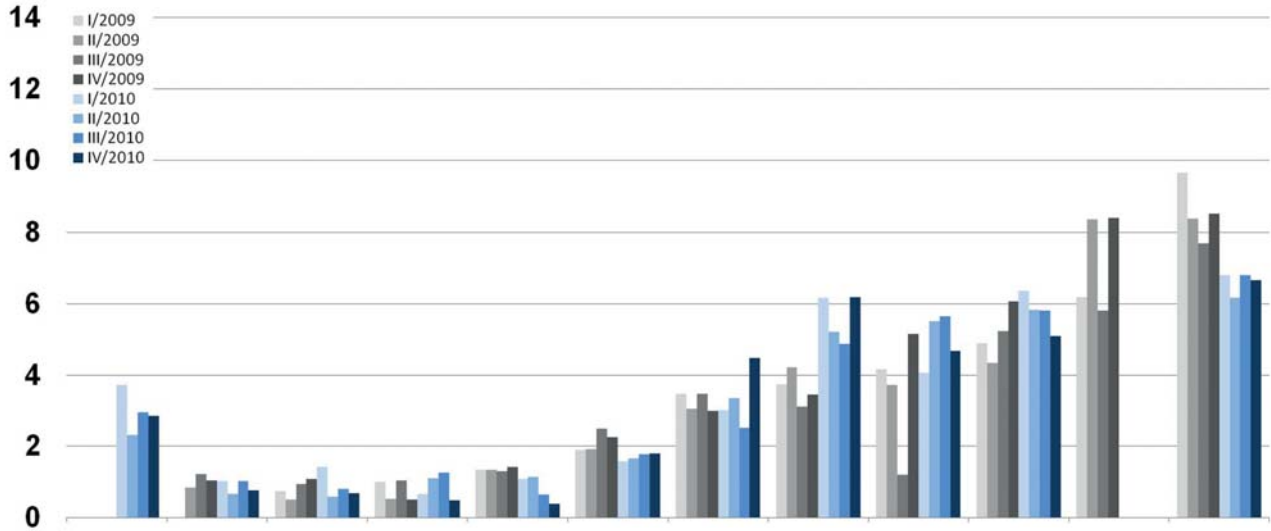
RDD/100



Krankenhaus gesamt, < 400 Betten

3. Generations-Cephalosporine

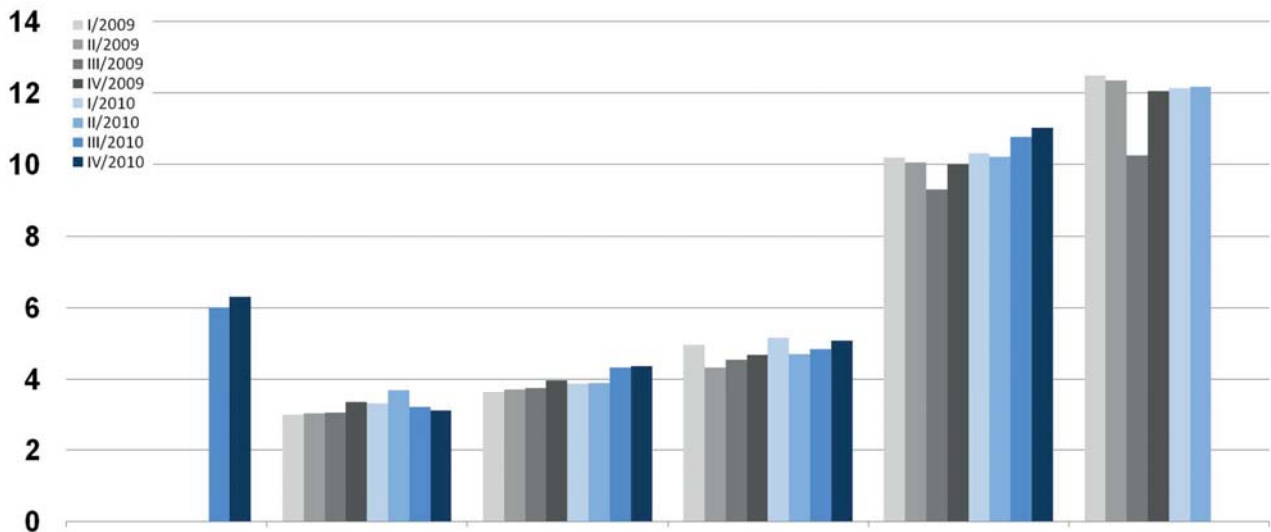
RDD/100



Krankenhaus gesamt, 400-800 Betten

3. Generations-Cephalosporine

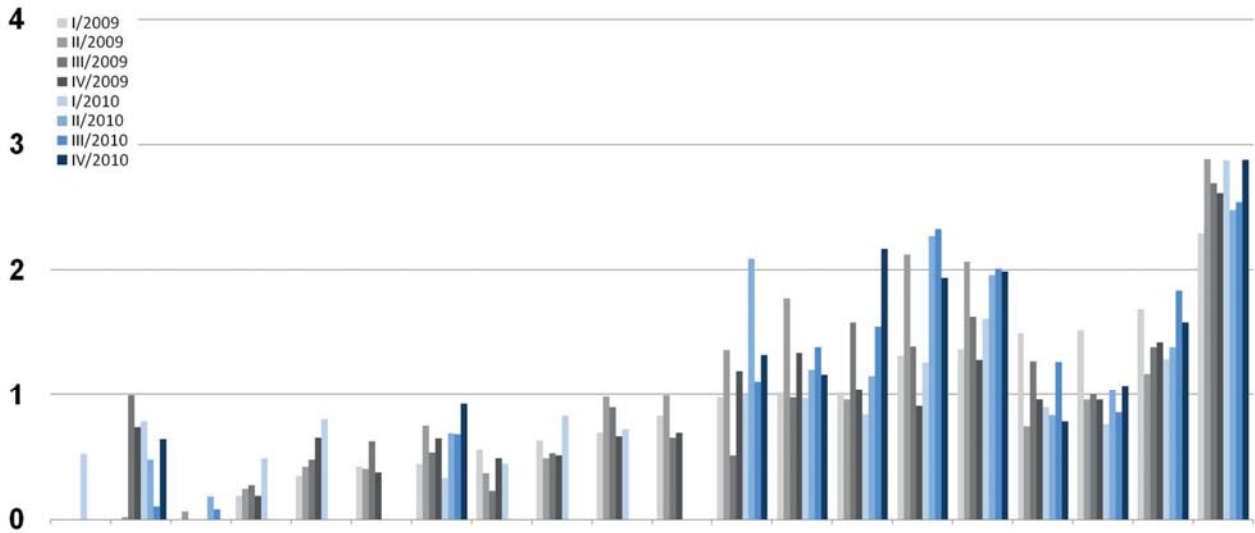
RDD/100



Krankenhaus gesamt, > 800 Betten

Carbapeneme

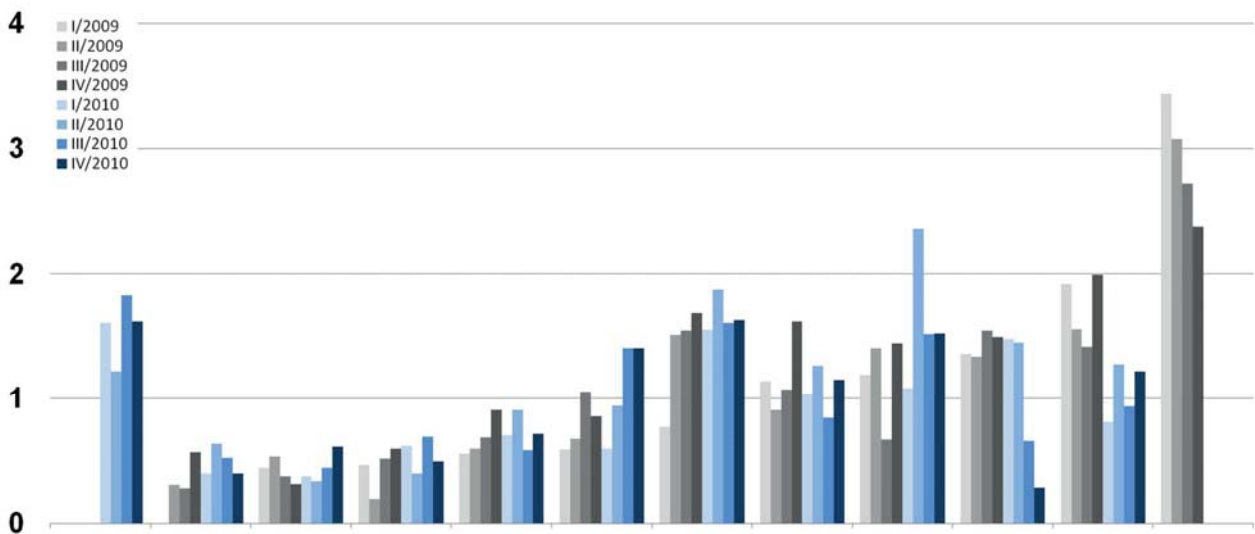
RDD/100



Krankenhaus gesamt, < 400 Betten

Carbapeneme

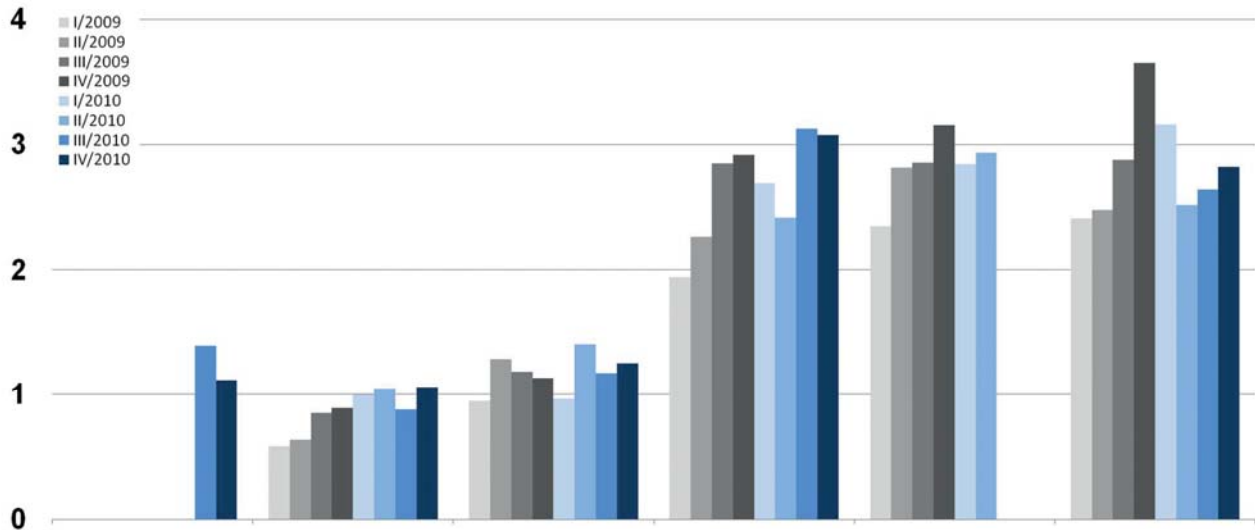
RDD/100



Krankenhaus gesamt, 400-800 Betten

Carbapeneme

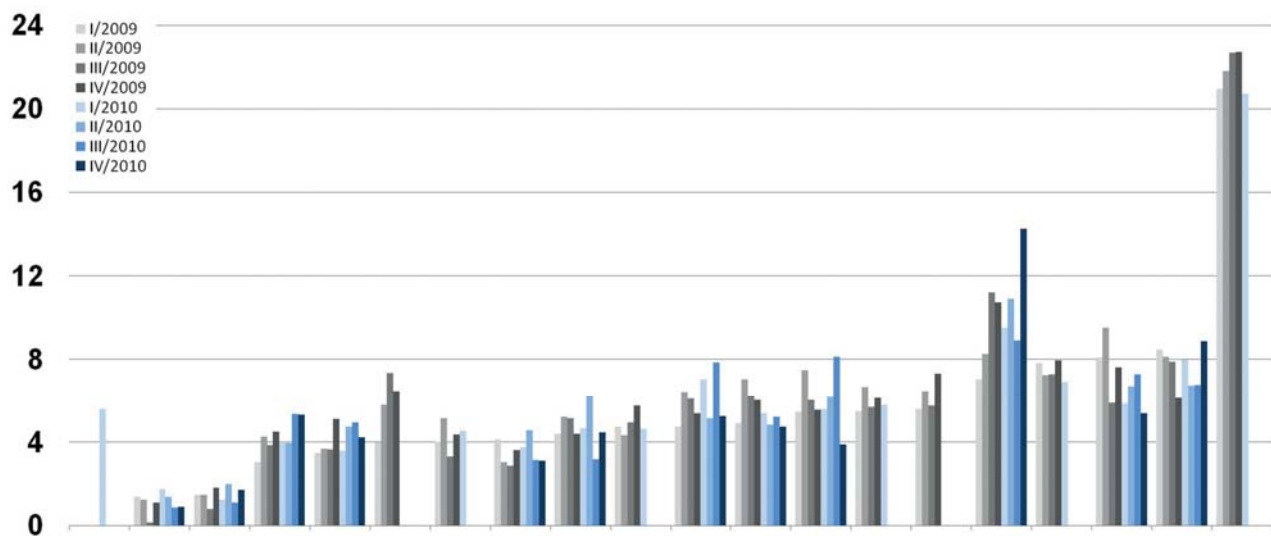
RDD/100



Krankenhaus gesamt, > 800 Betten

1./2. Generations-Cephalosporine

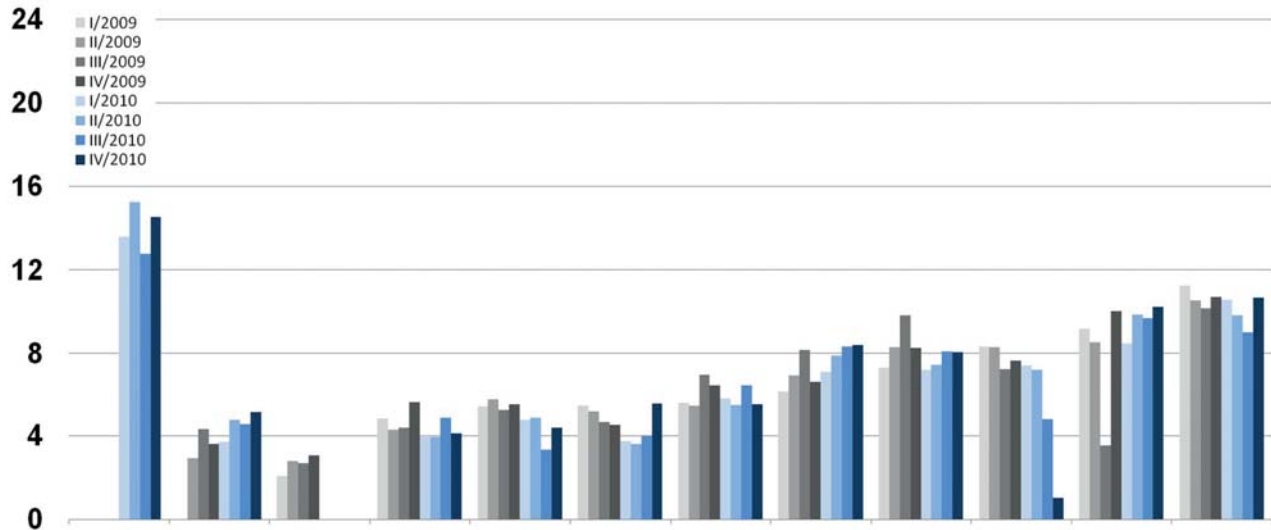
RDD/100



Krankenhaus gesamt, < 400 Betten

1./2. Generations-Cephalosporine

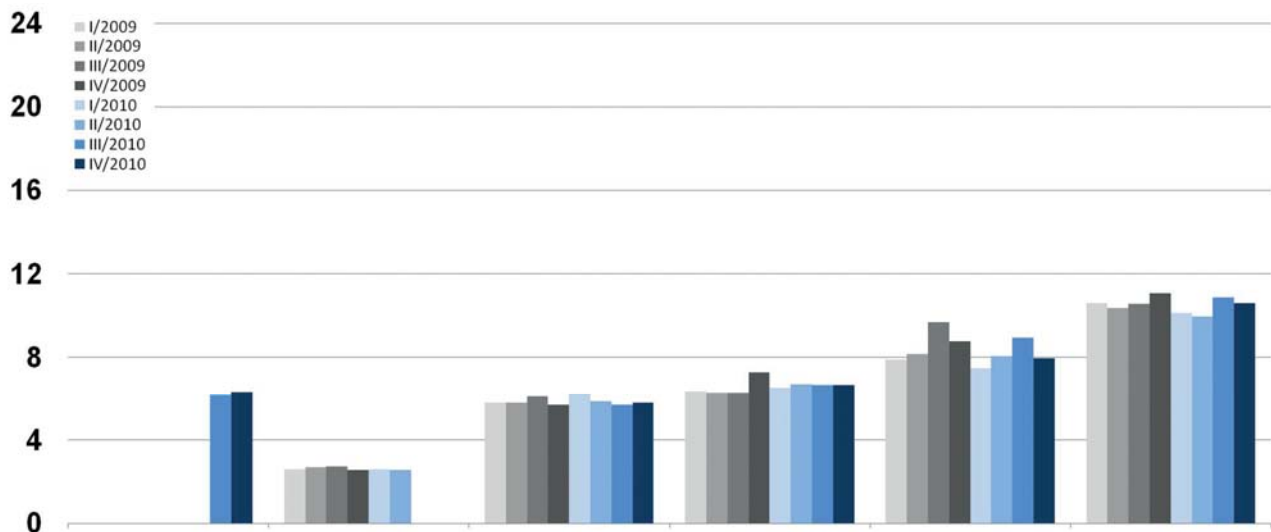
RDD/100



Krankenhaus gesamt, 400-800 Betten

1./2. Generations-Cephalosporine

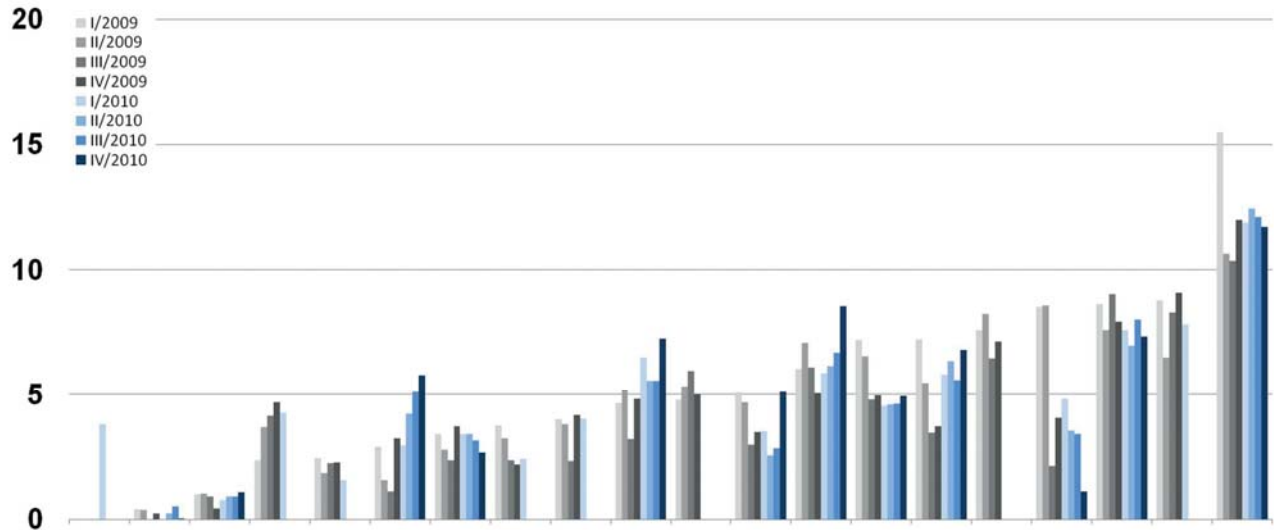
RDD/100



Krankenhaus gesamt, > 800 Betten

Aminopenicilline/BLH

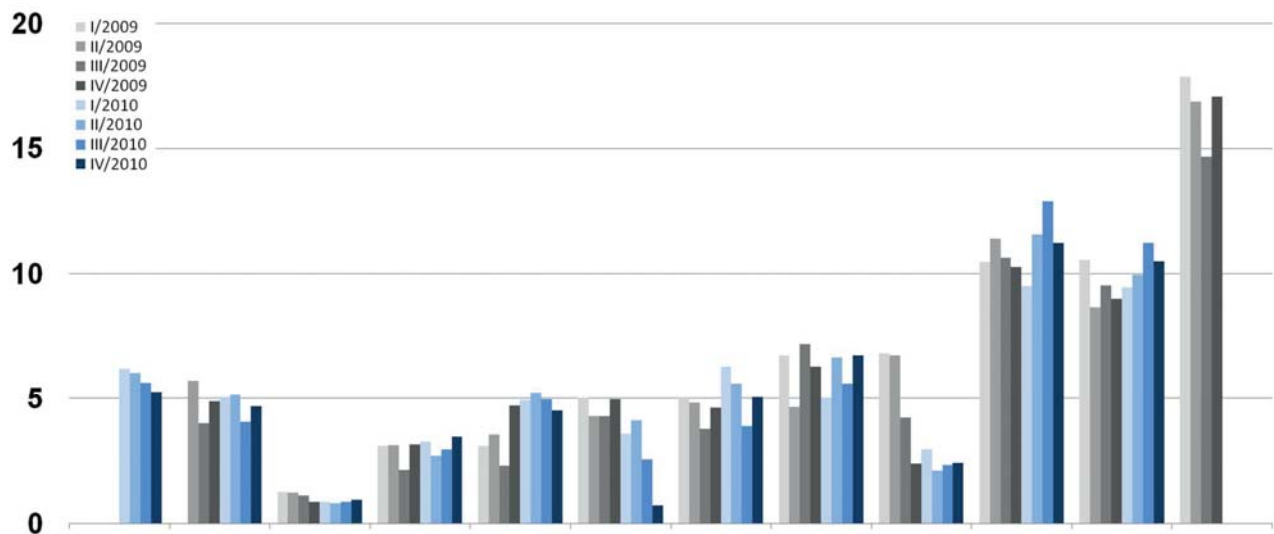
RDD/100



Krankenhaus gesamt, < 400 Betten

Aminopenicilline/BLH

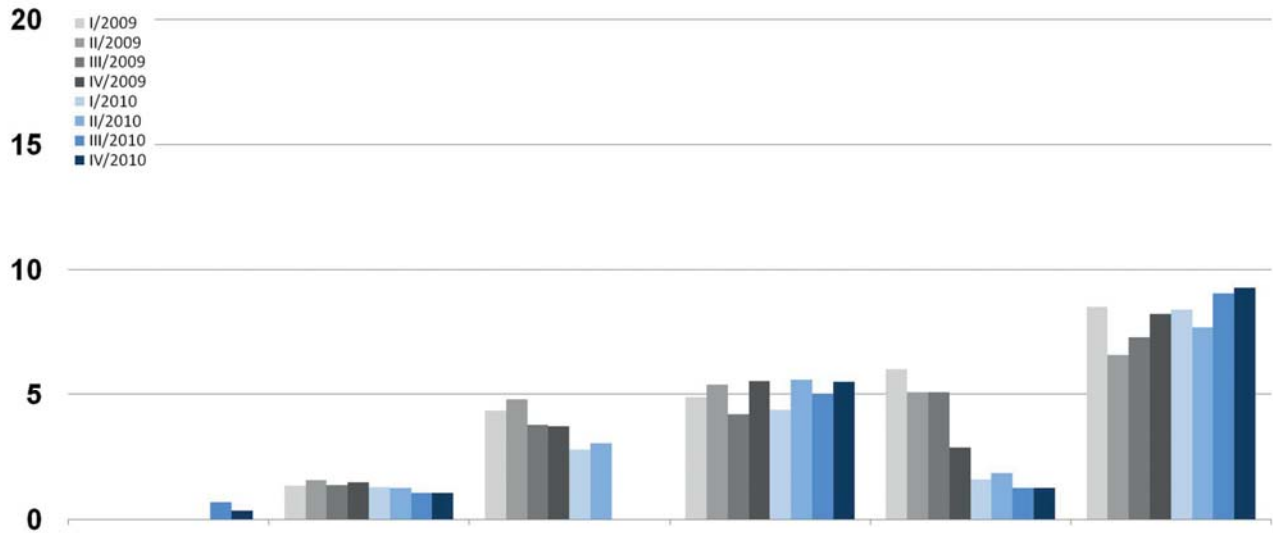
RDD/100



Krankenhaus gesamt, 400-800 Betten

Aminopenicilline/BLH

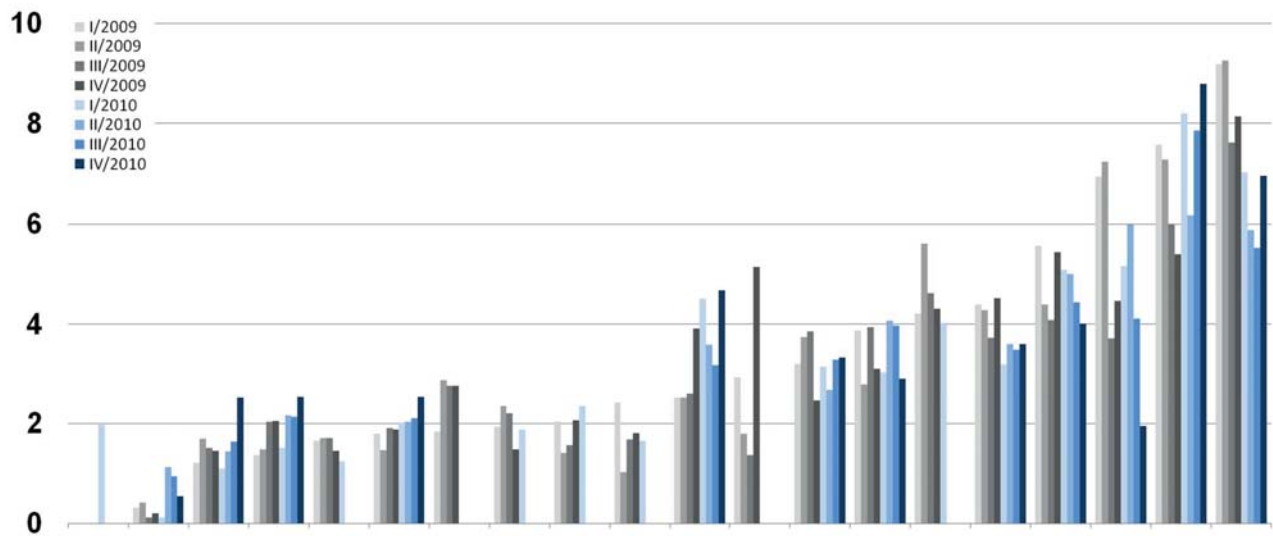
RDD/100



Krankenhaus gesamt, > 800 Betten

Makrolide und Clindamycin

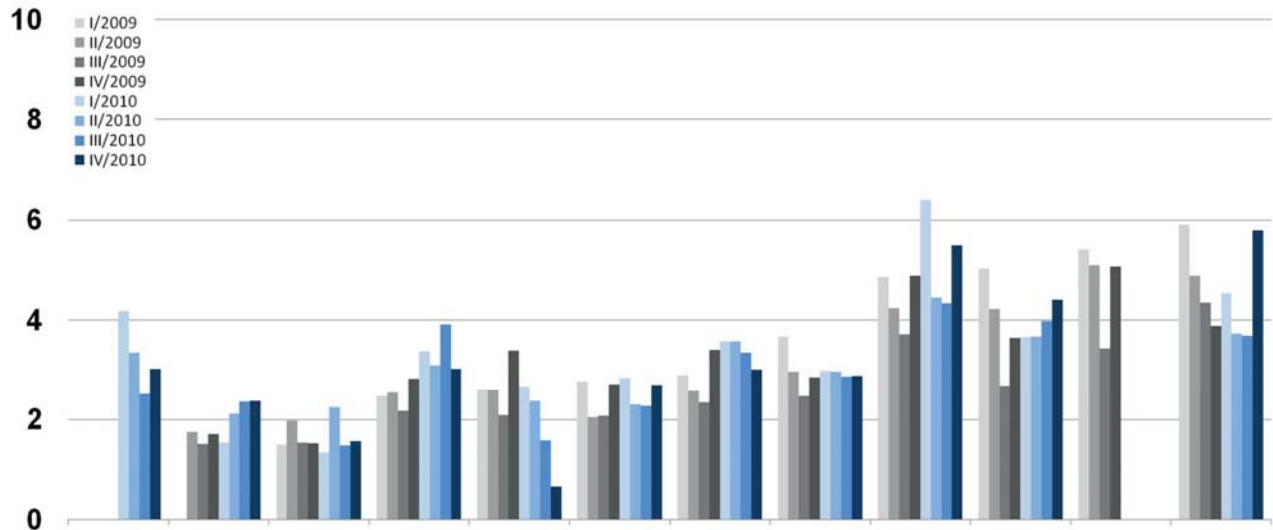
RDD/100



Krankenhaus gesamt, < 400 Betten

Makrolide und Clindamycin

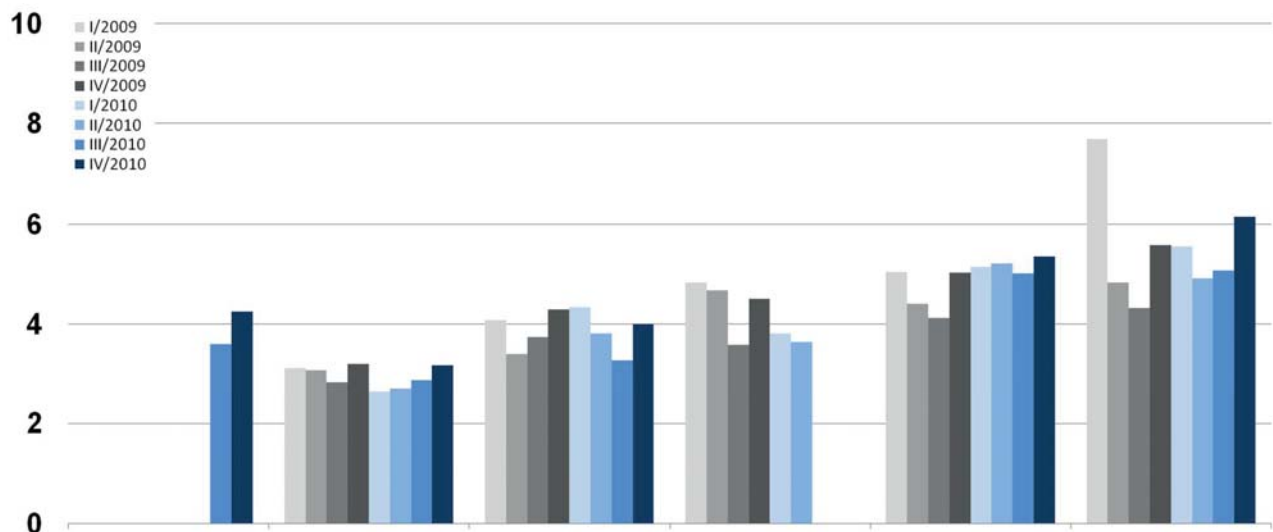
RDD/100



Krankenhaus gesamt, 400-800 Betten

Makrolide und Clindamycin

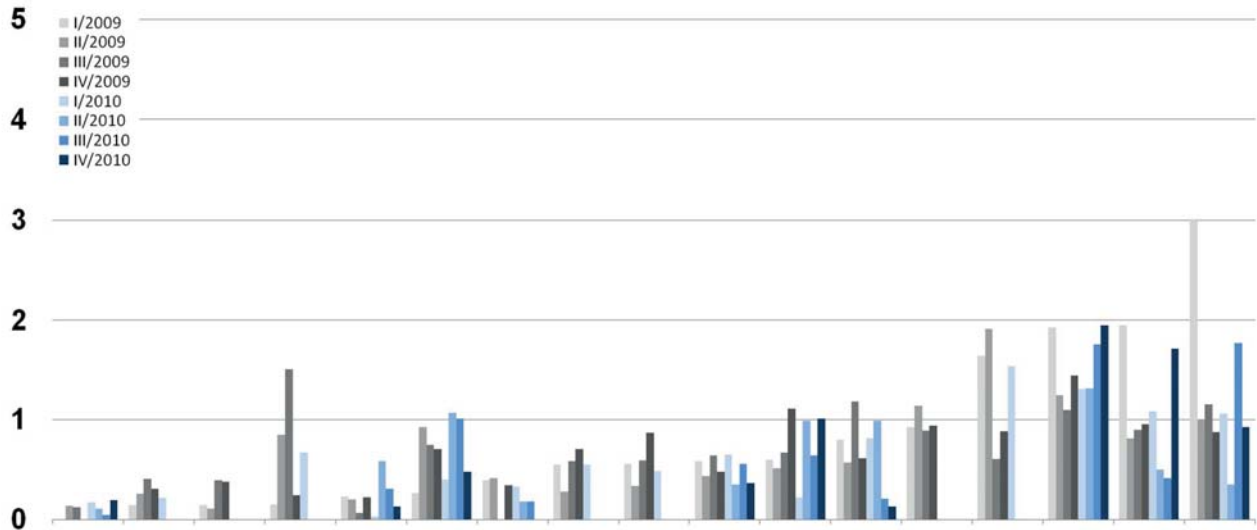
RDD/100



Krankenhaus gesamt, > 800 Betten

Antimykotika systemisch gesamt

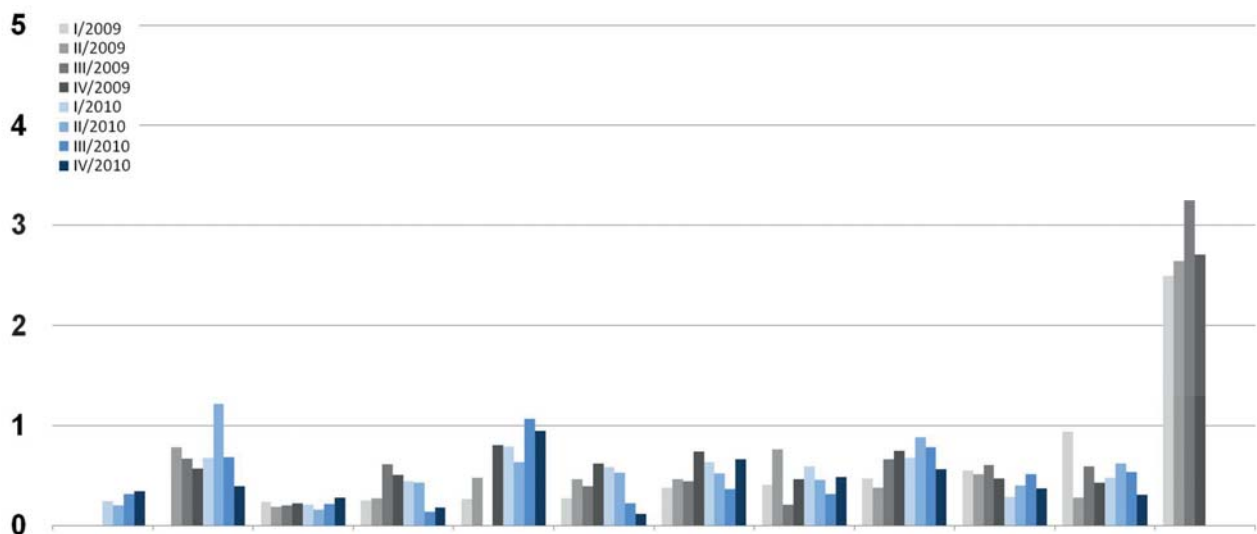
RDD/100



Krankenhaus gesamt, < 400 Betten

Antimykotika systemisch gesamt

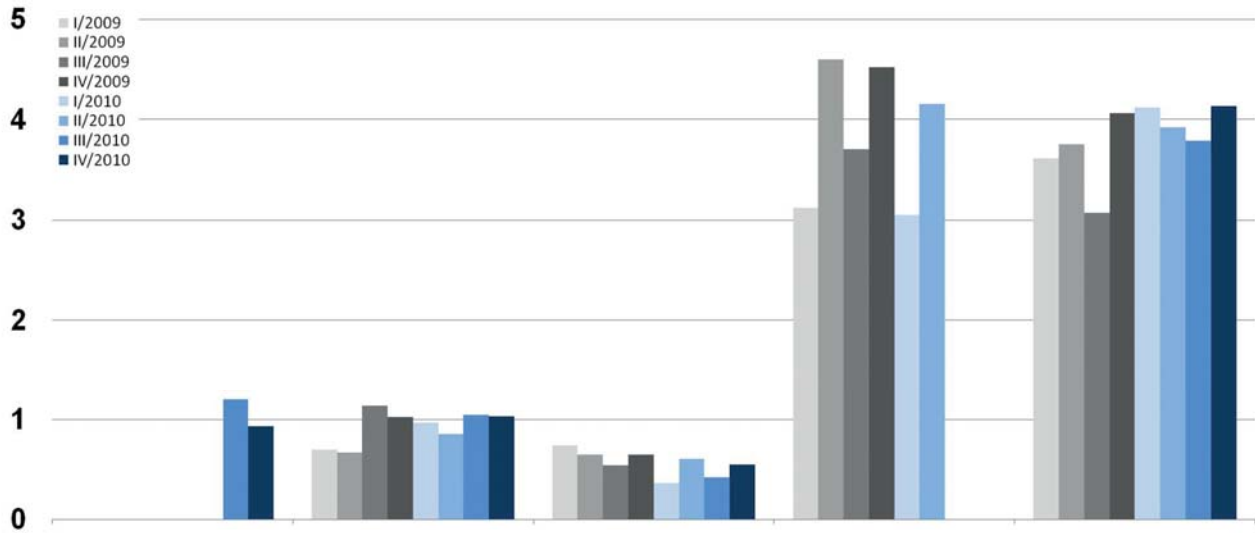
RDD/100



Krankenhaus gesamt, 400-800 Betten

Antimykotika systemisch gesamt

RDD/100



Krankenhaus gesamt, > 800 Betten

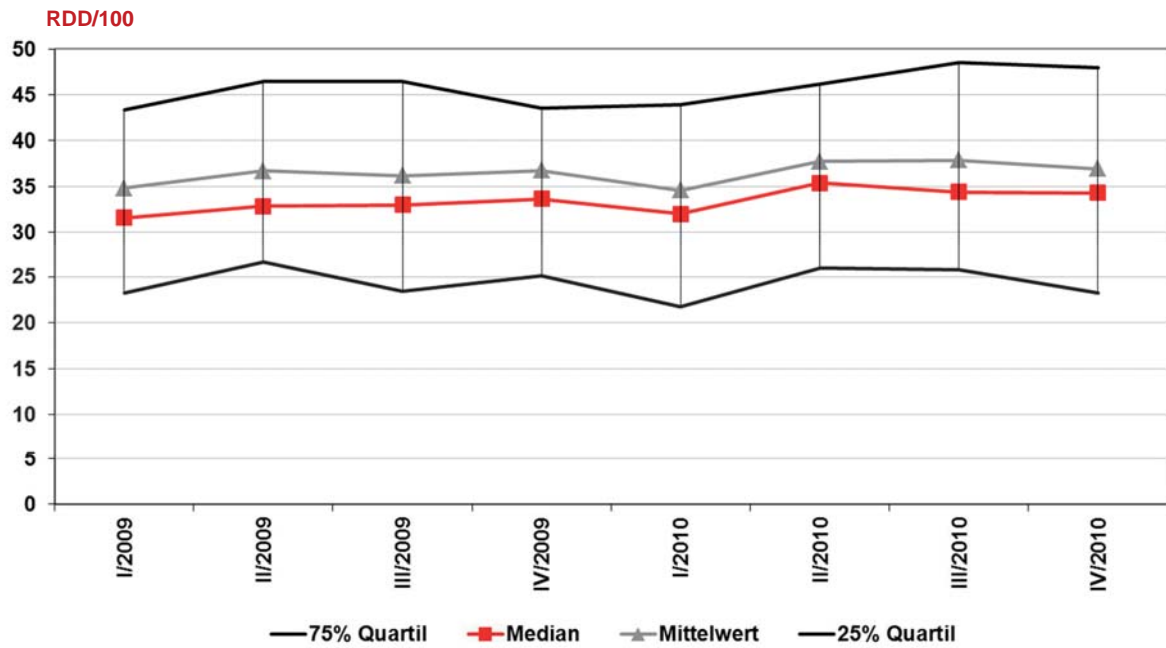
Krankenhausvergleichs-
Report

Jahre 2009 und 2010

Nur zum internen Gebrauch!

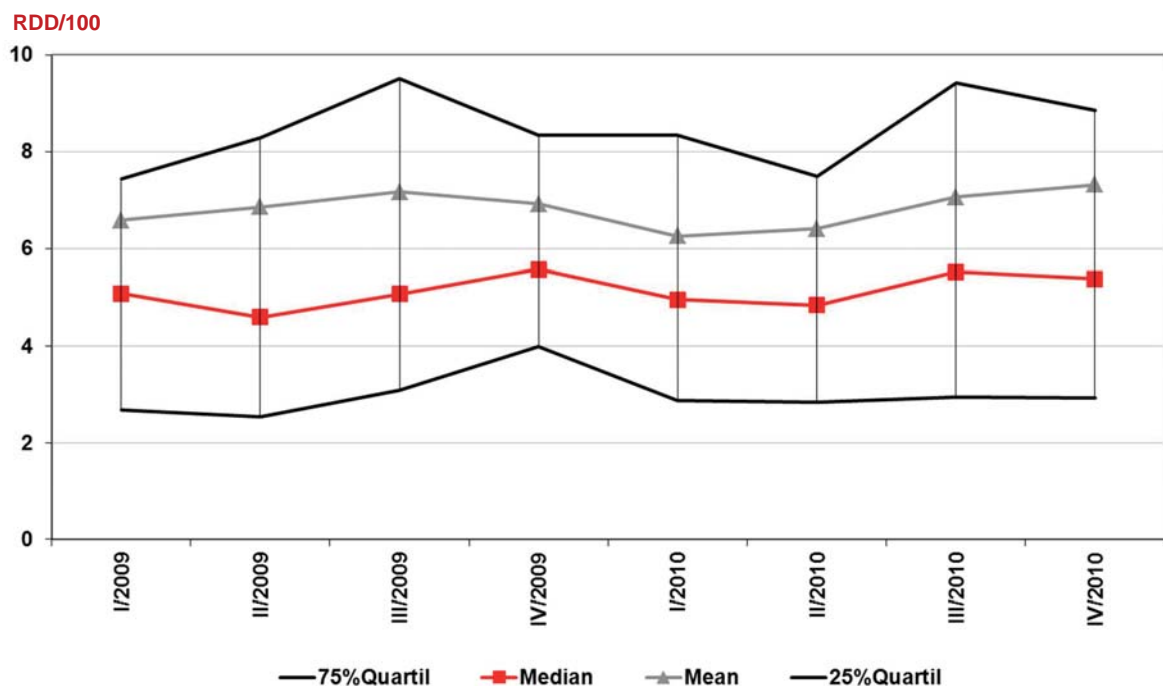


Antibiotika gesamt



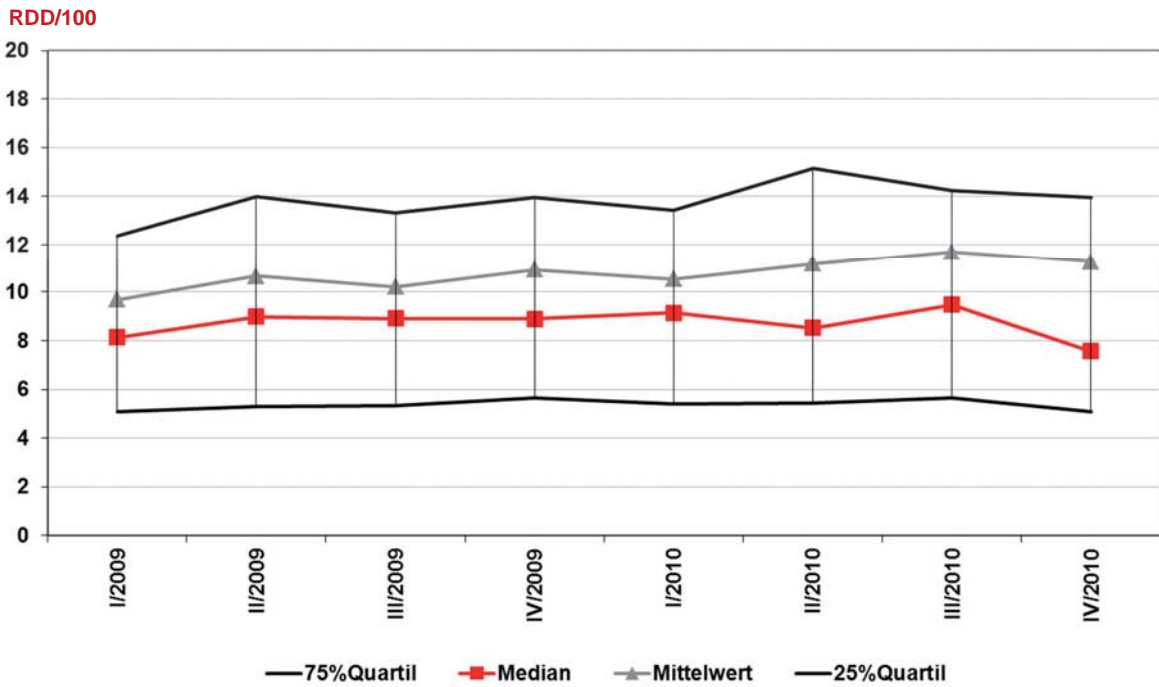
Chirurgische Normalstationen

Fluorchinolone



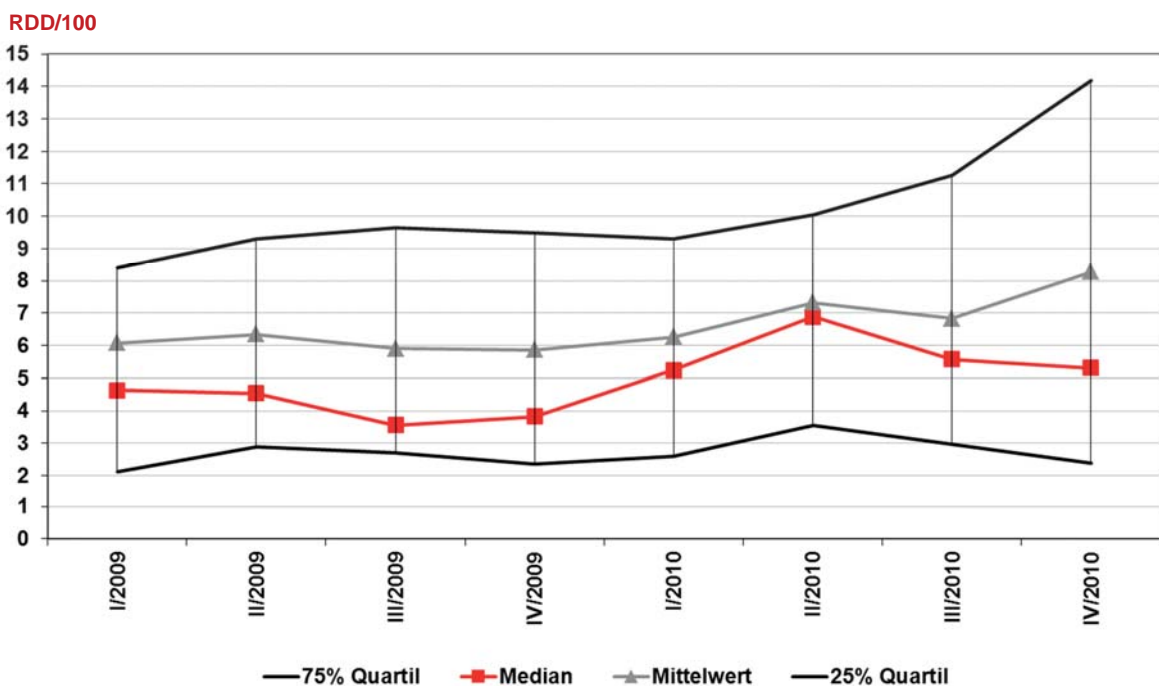
Chirurgische Normalstationen

1./2. Generations-Cephalosporine



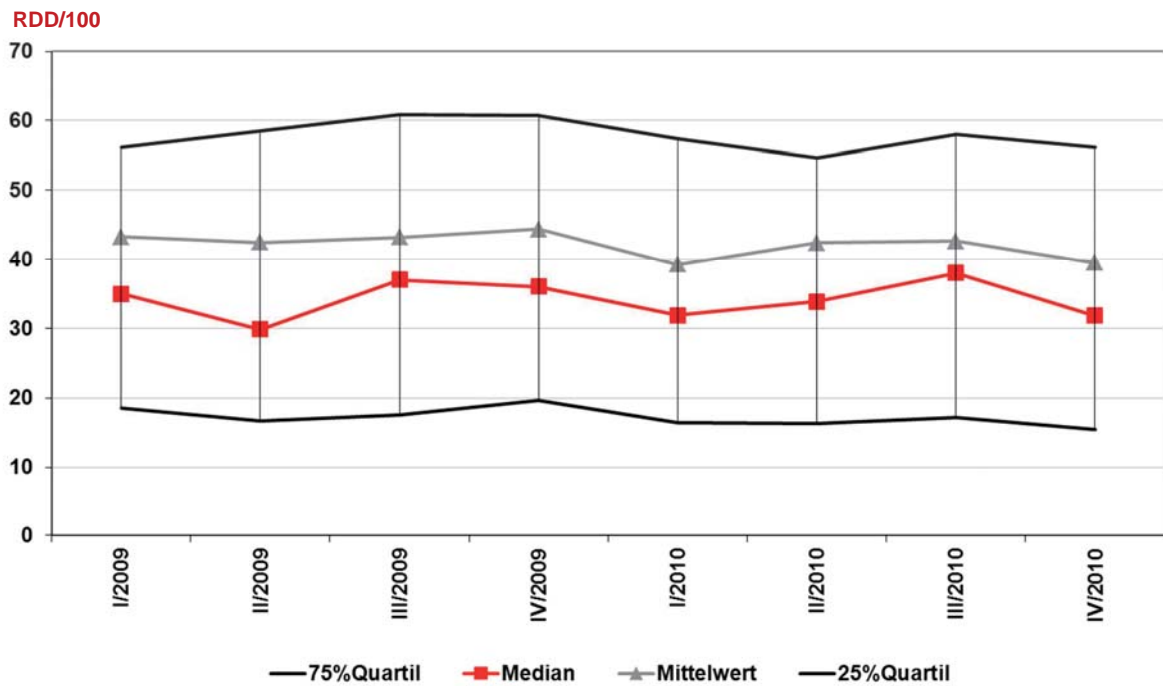
Chirurgische Normalstationen

Metronidazol



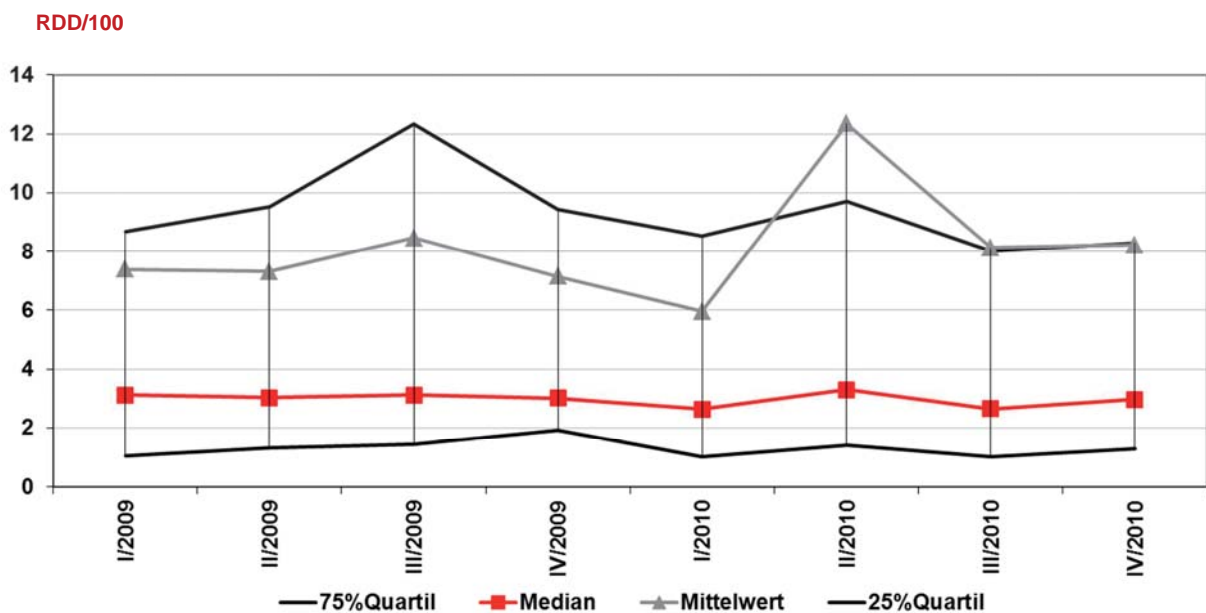
Allgemein- & Viszeralchirurgie Normalstationen

Antibiotika gesamt



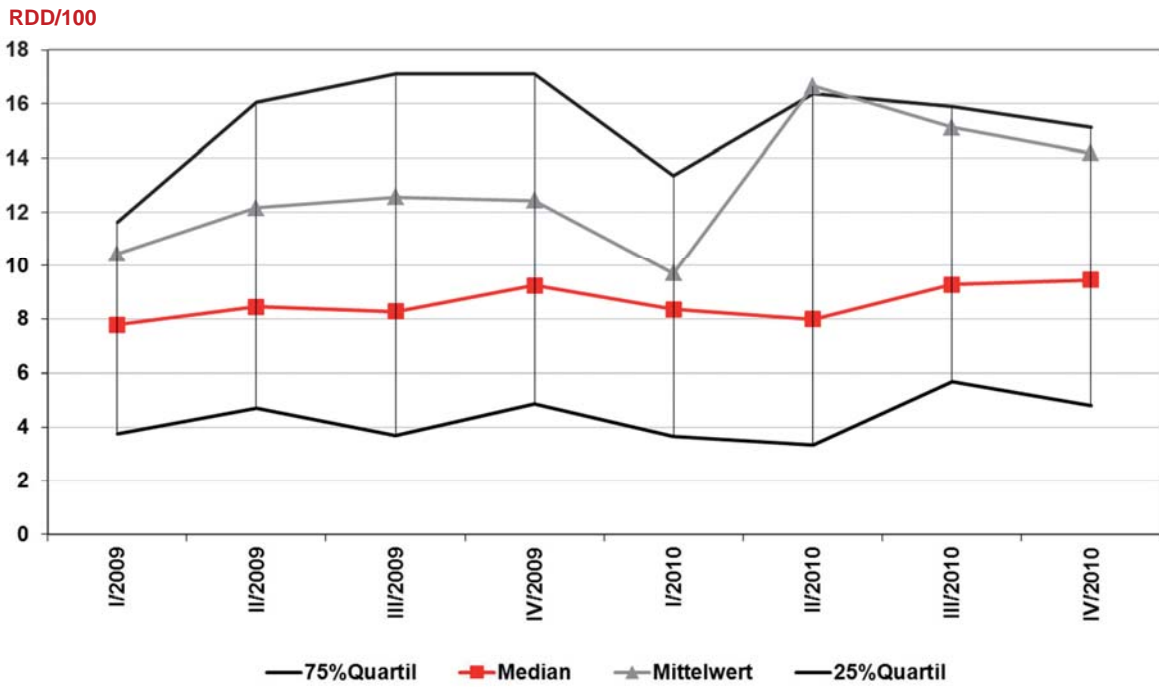
Andere Operative Normalstationen

Fluorchinolone



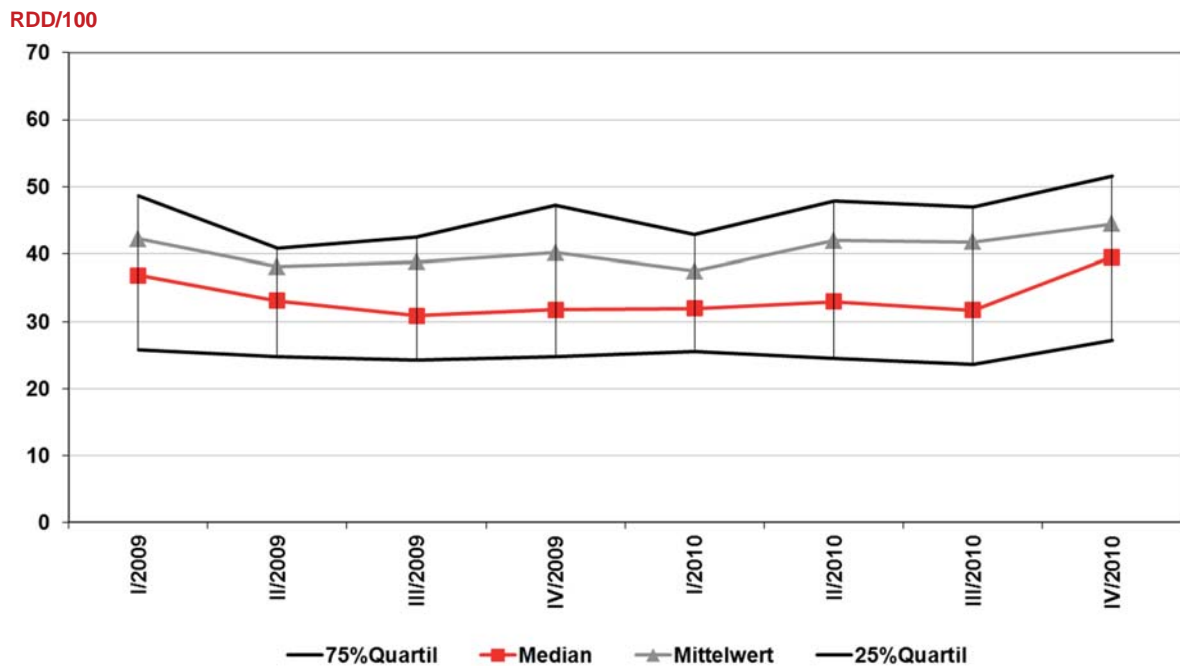
Andere Operative Normalstationen

1./2. Generations-Cephalosporine



Andere Operative Normalstationen

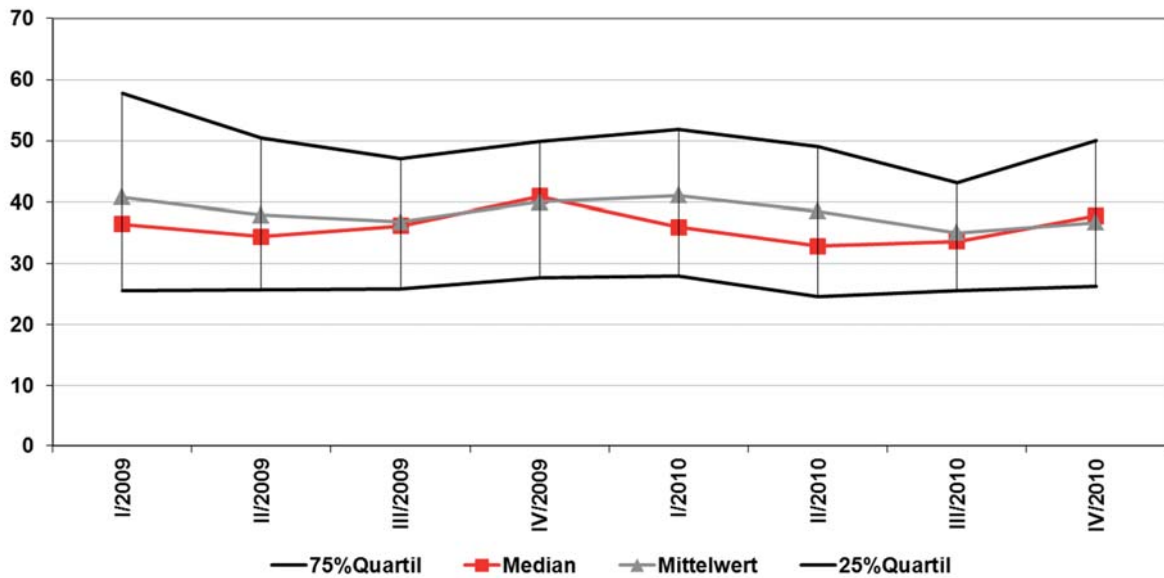
Antibiotika gesamt



Internistische und andere konservative Normalstationen, < 400 Betten

Antibiotika gesamt

RDD/100



Internistische und andere konservative Normalstationen, 400-800 Betten

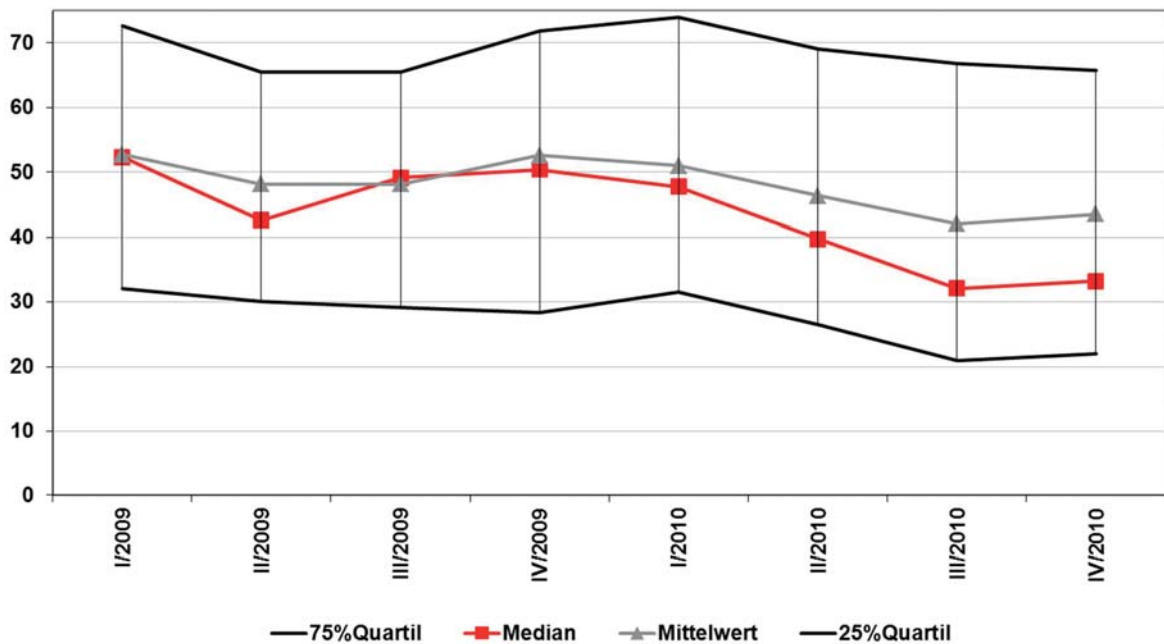
KH-Vergleichsreport 2009-2010 "Normalstationen"

9 von 25

27/06/2011

Antibiotika gesamt

RDD/100



Internistische und andere konservative Normalstationen, > 800 Betten

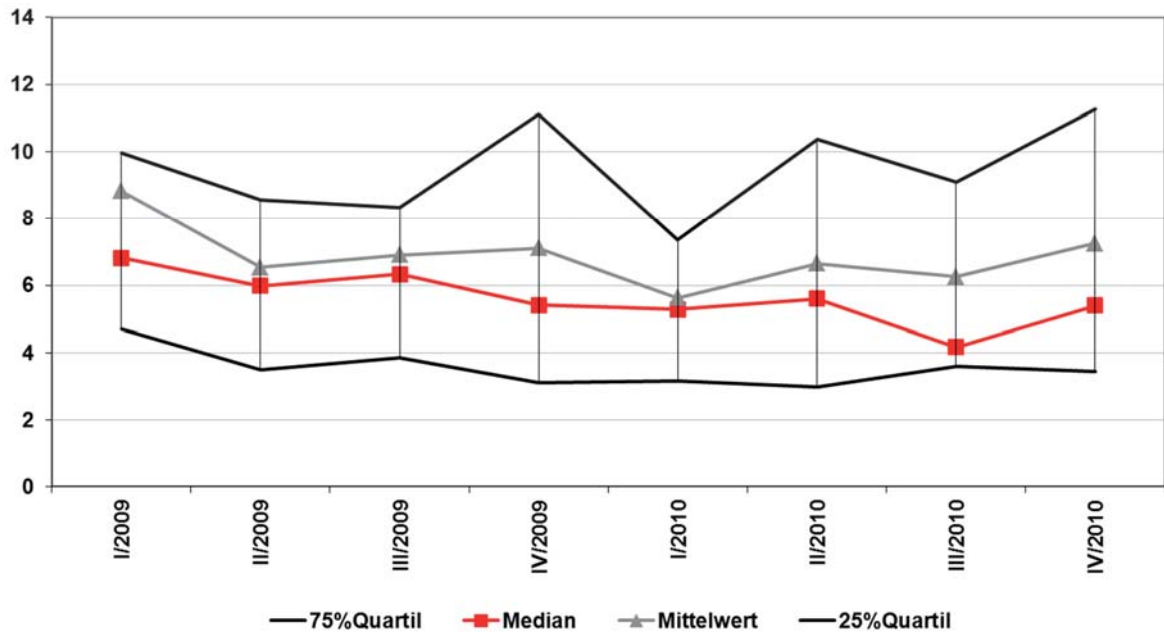
KH-Vergleichsreport 2009-2010 "Normalstationen"

10 von 25

27/06/2011

Fluorchinolone

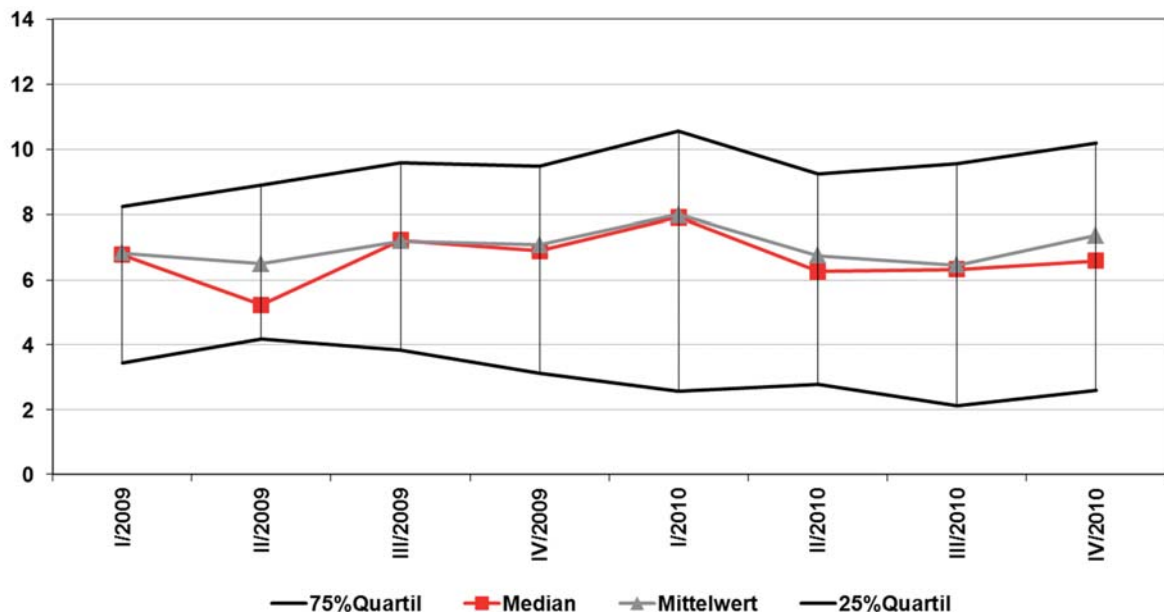
RDD/100



Internistische und andere konservative Normalstationen, < 400

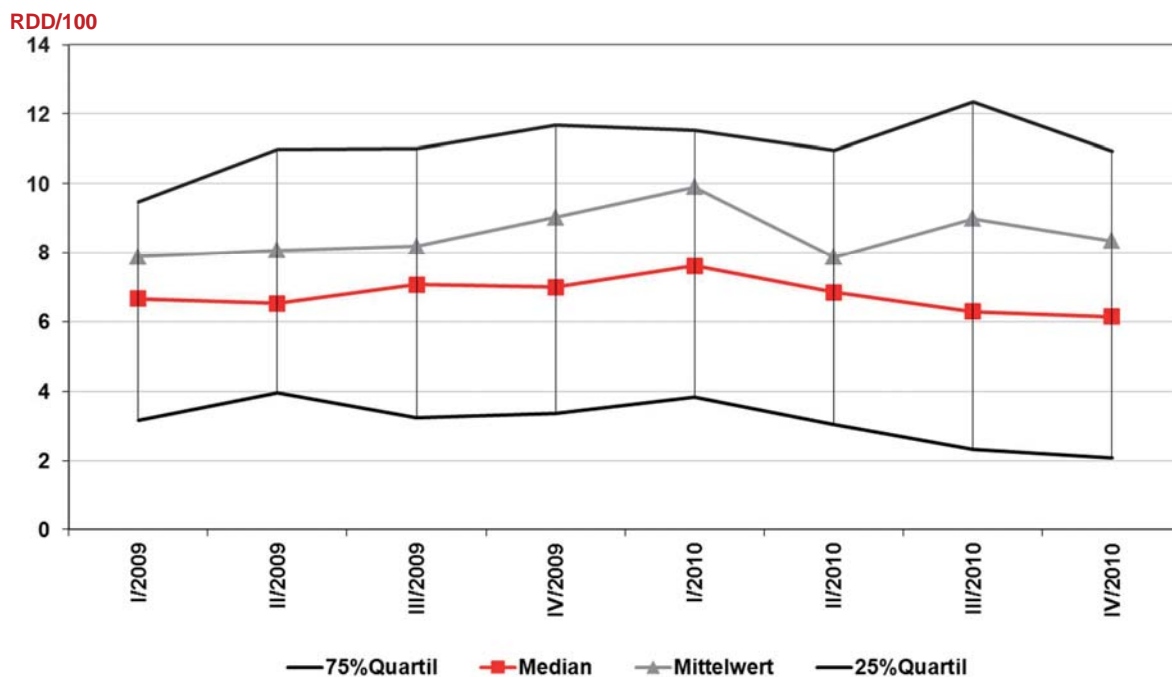
Fluorchinolone

RDD/100



Internistische und andere konservative Normalstationen, 400-800 Betten

Fluorchinolone



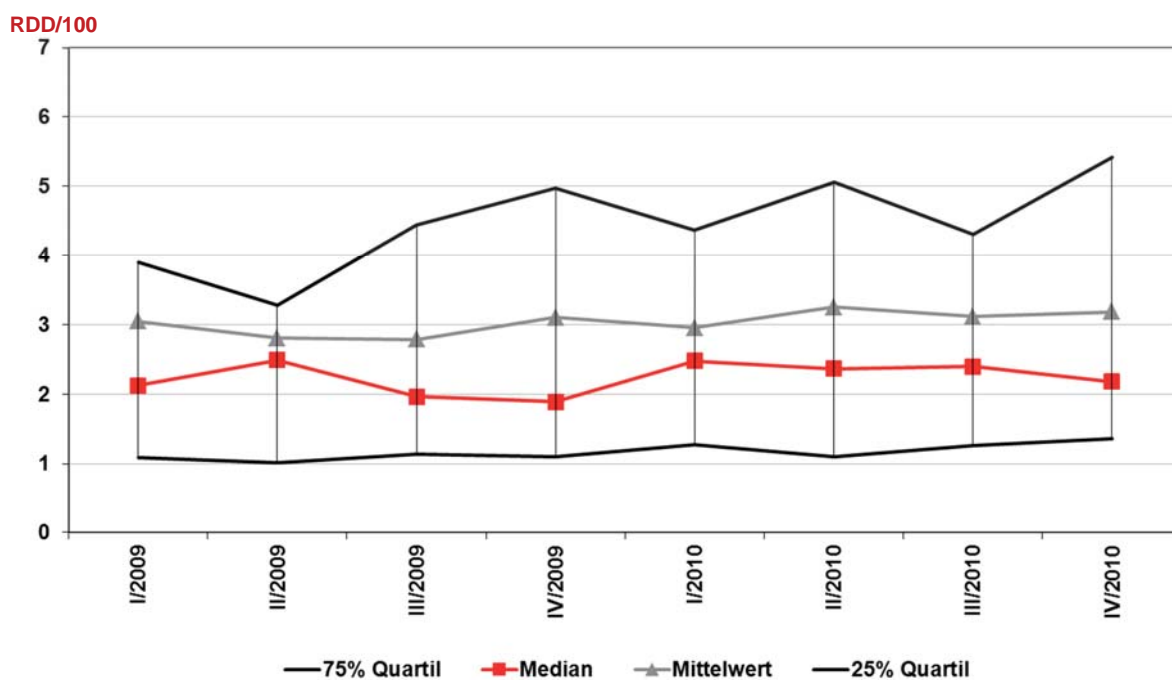
Internistische und andere konservative Normalstationen, > 800 Betten

KH-Vergleichsreport 2009-2010 "Normalstationen"

13 von 25

27/06/2011

1./2. Generations-Cephalosporine



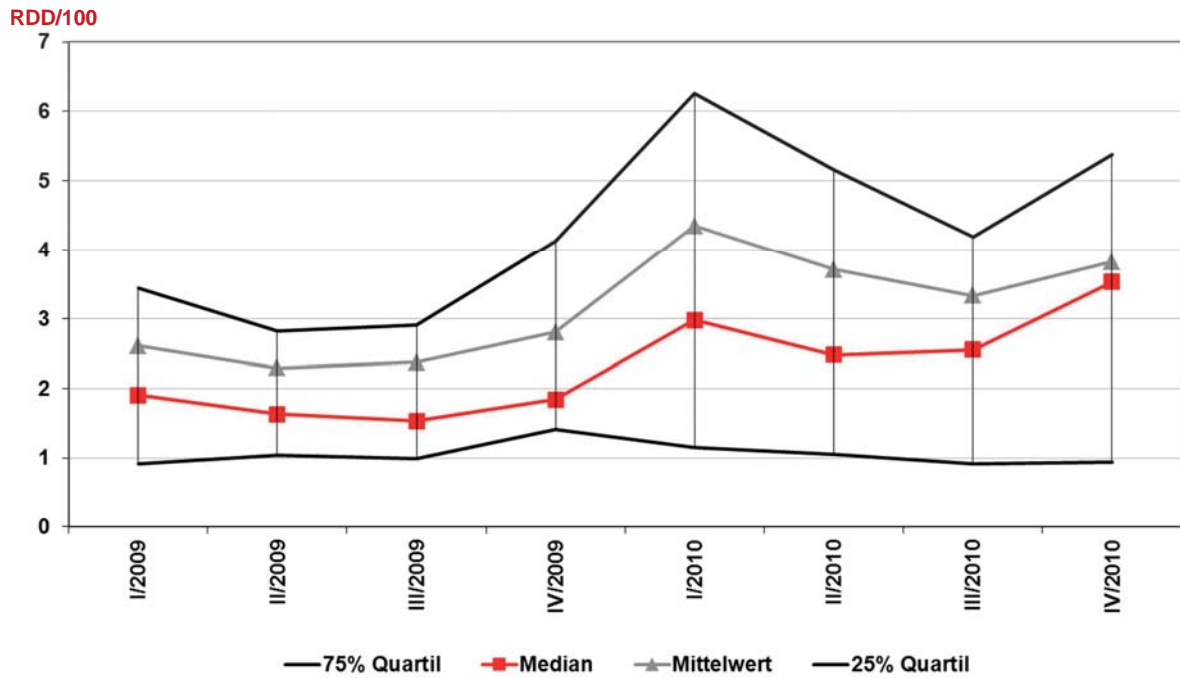
Internistische und andere konservative Normalstationen, < 400 Betten

KH-Vergleichsreport 2009-2010 "Normalstationen"

14 von 25

27/06/2011

1./2. Generations-Cephalosporine



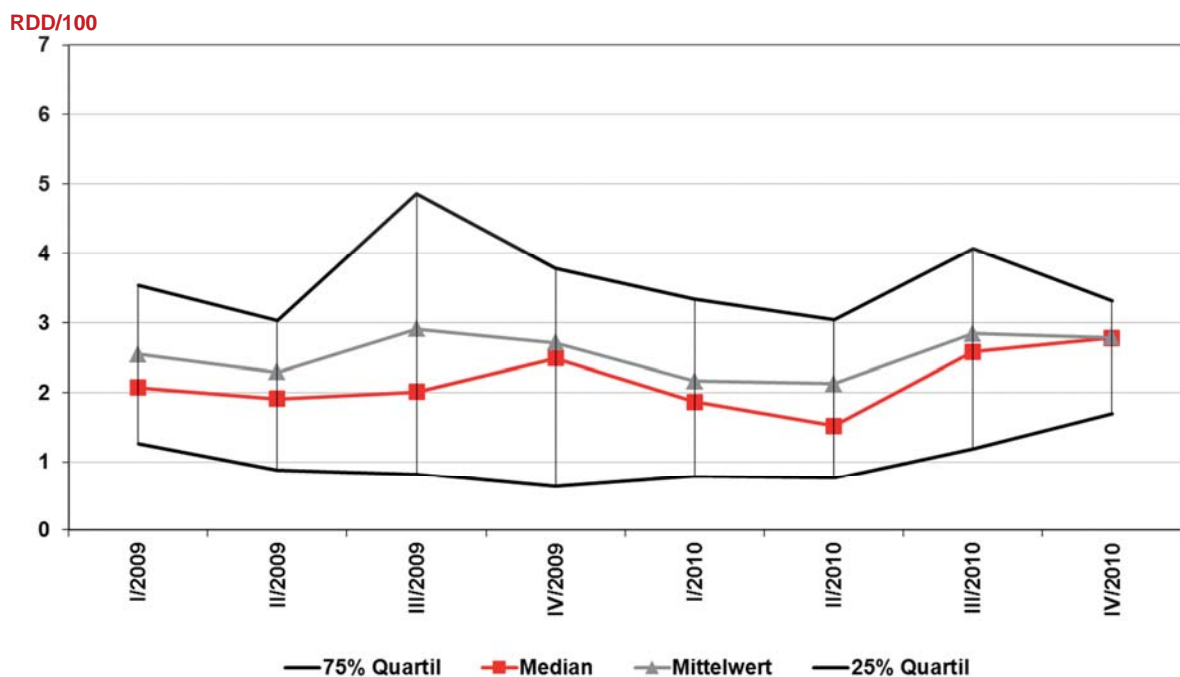
Internistische und andere konservative Normalstationen, 400-800 Betten

KH-Vergleichsreport 2009-2010 "Normalstationen"

15 von 25

27/06/2011

1./2. Generations-Cephalosporine



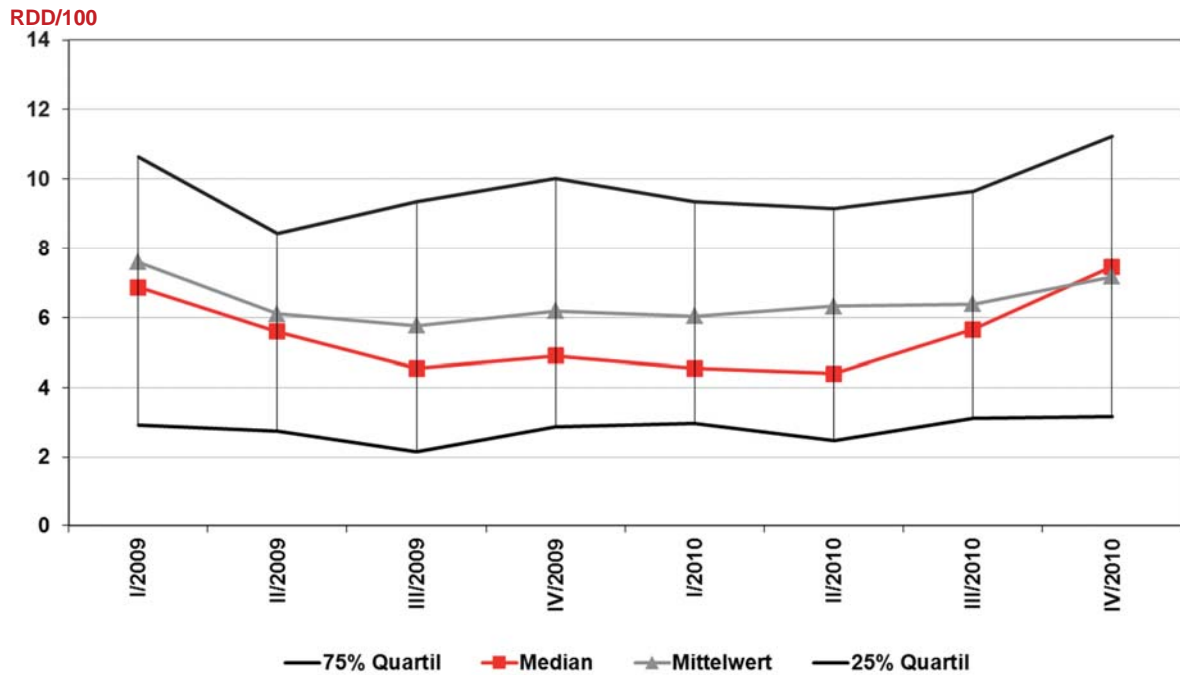
Internistische und andere konservative Normalstationen, > 800 Betten

KH-Vergleichsreport 2009-2010 "Normalstationen"

16 von 25

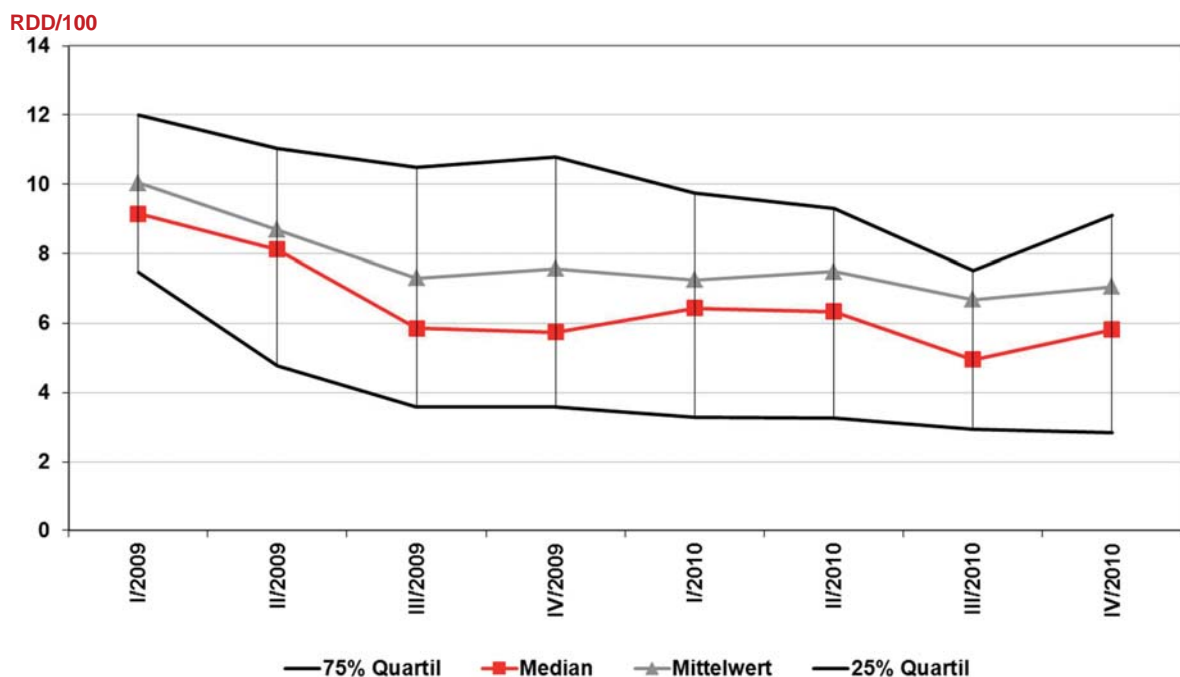
27/06/2011

Aminopenicilline/BLH



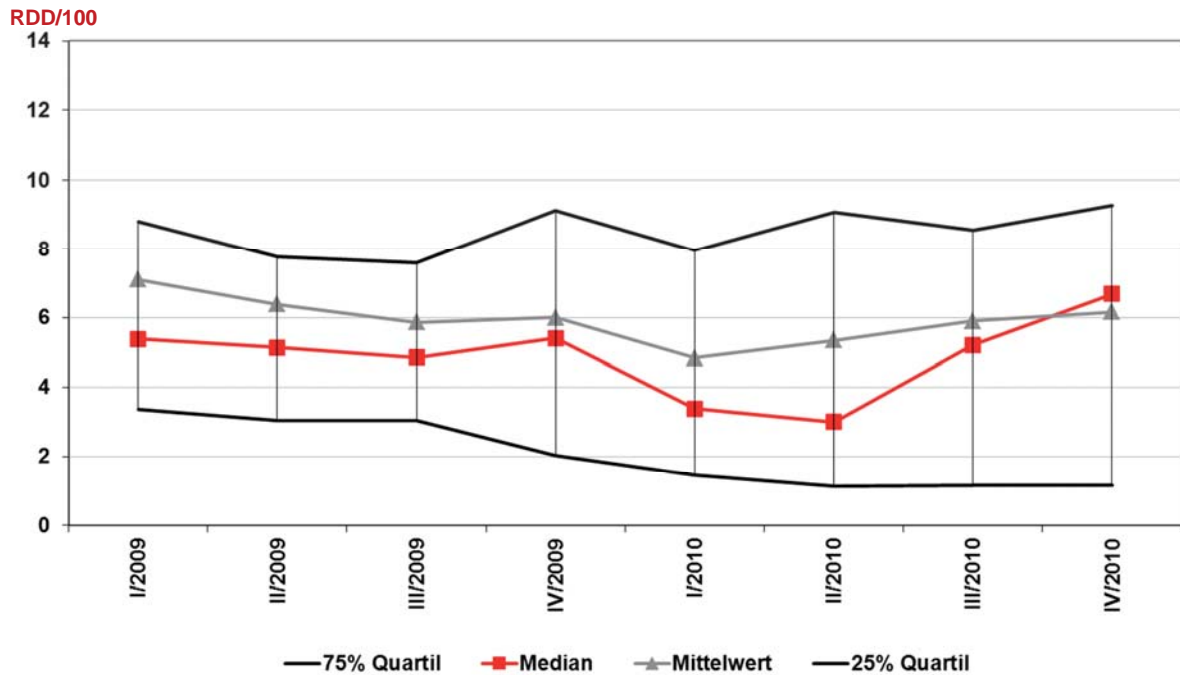
Internistische und andere konservative Normalstationen, < 400 Betten

Aminopenicilline/BLH



Internistische und andere konservative Normalstationen, 400-800 Betten

Aminopenicilline/BLH



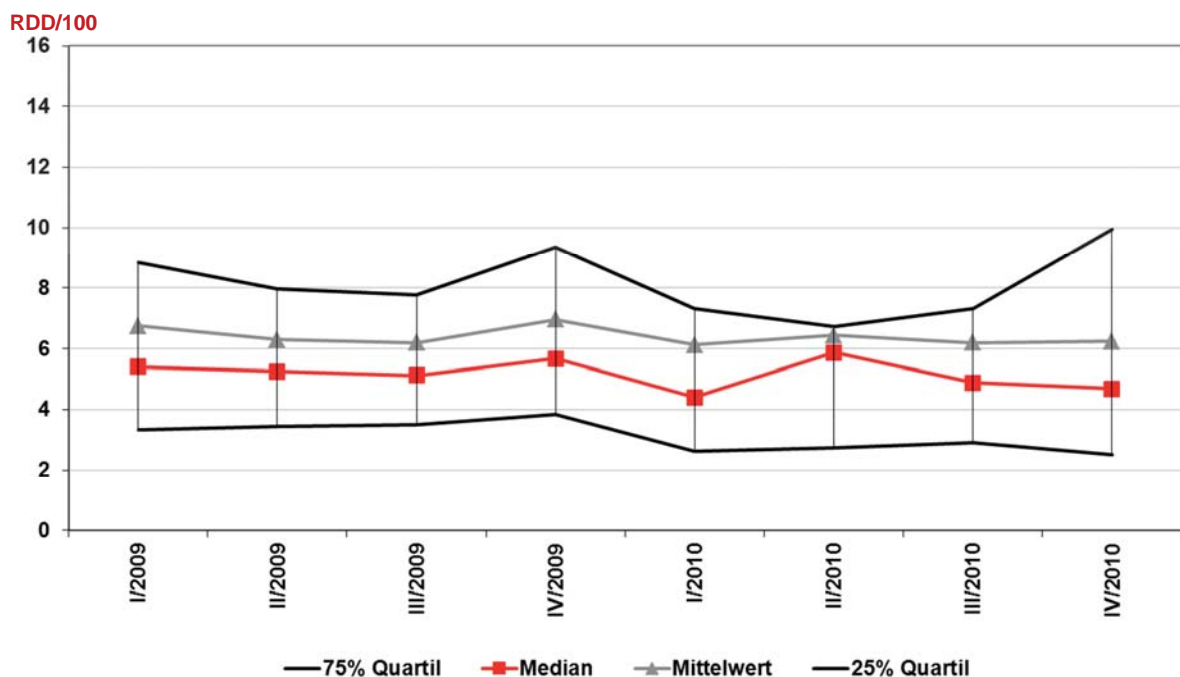
Internistische und andere konservative Normalstationen, > 800 Betten

KH-Vergleichsreport 2009-2010 "Normalstationen"

19 von 25

27/06/2011

3. Generations-Cephalosporine



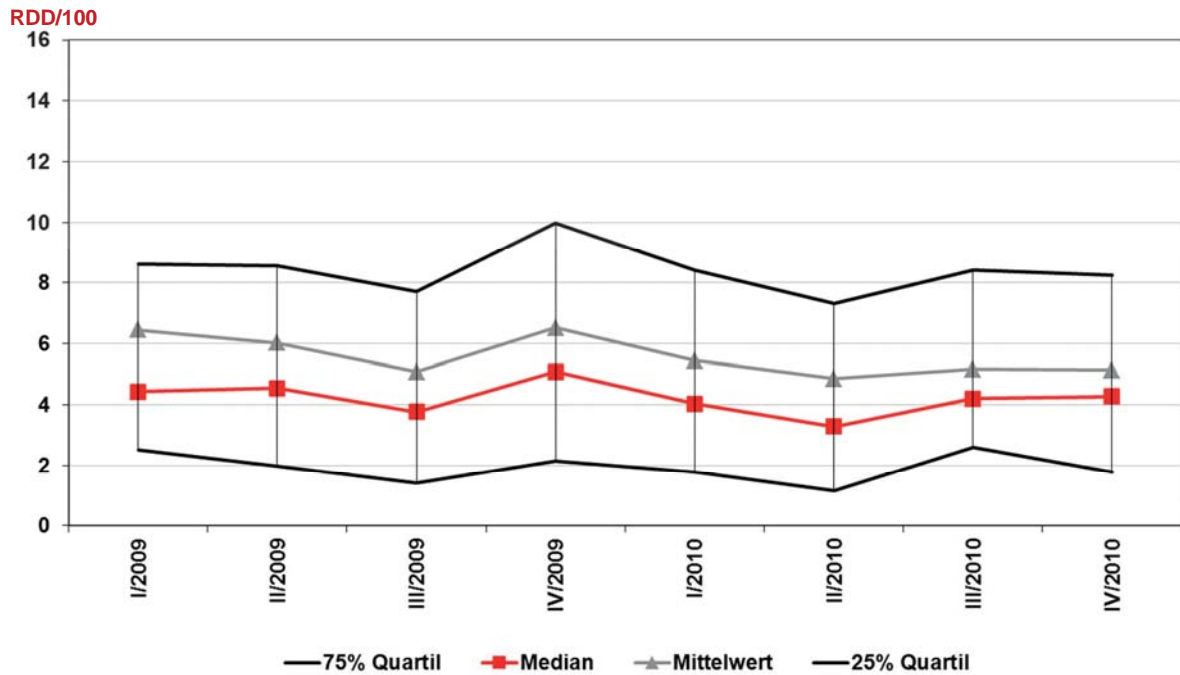
Internistische und andere konservative Normalstationen, < 400 Betten

KH-Vergleichsreport 2009-2010 "Normalstationen"

20 von 25

27/06/2011

3. Generations-Cephalosporine



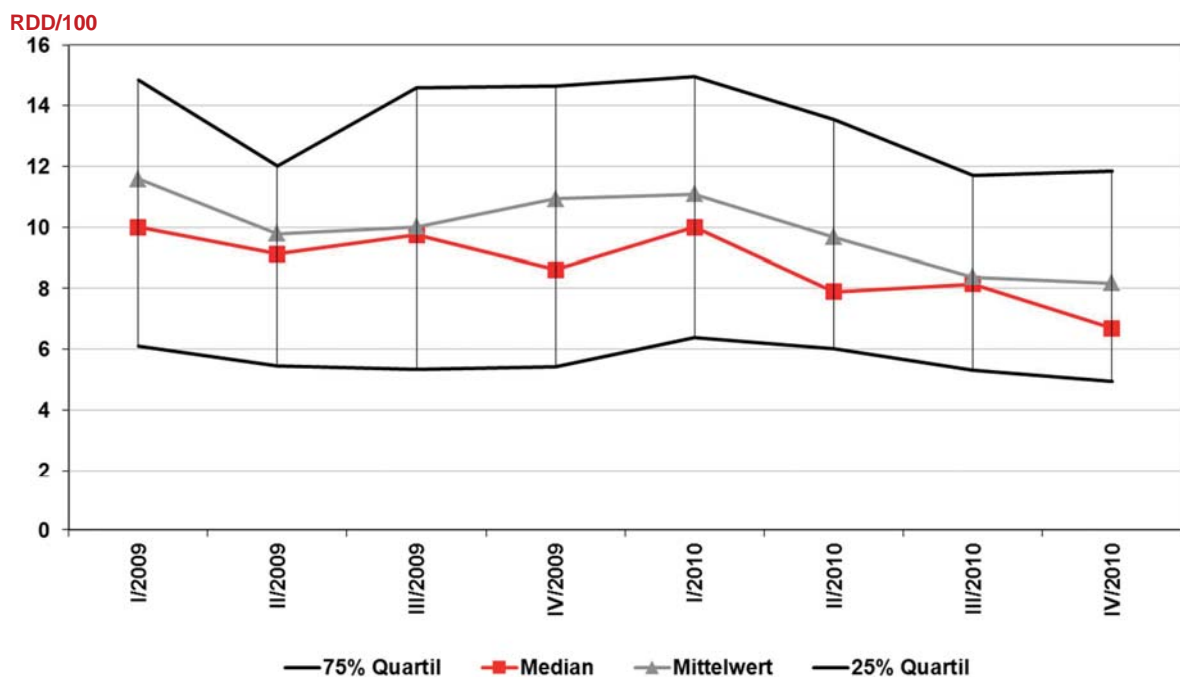
Internistische und andere konservative Normalstationen, 400-800 Betten

KH-Vergleichsreport 2009-2010 "Normalstationen"

21 von 25

27/06/2011

3. Generations-Cephalosporine



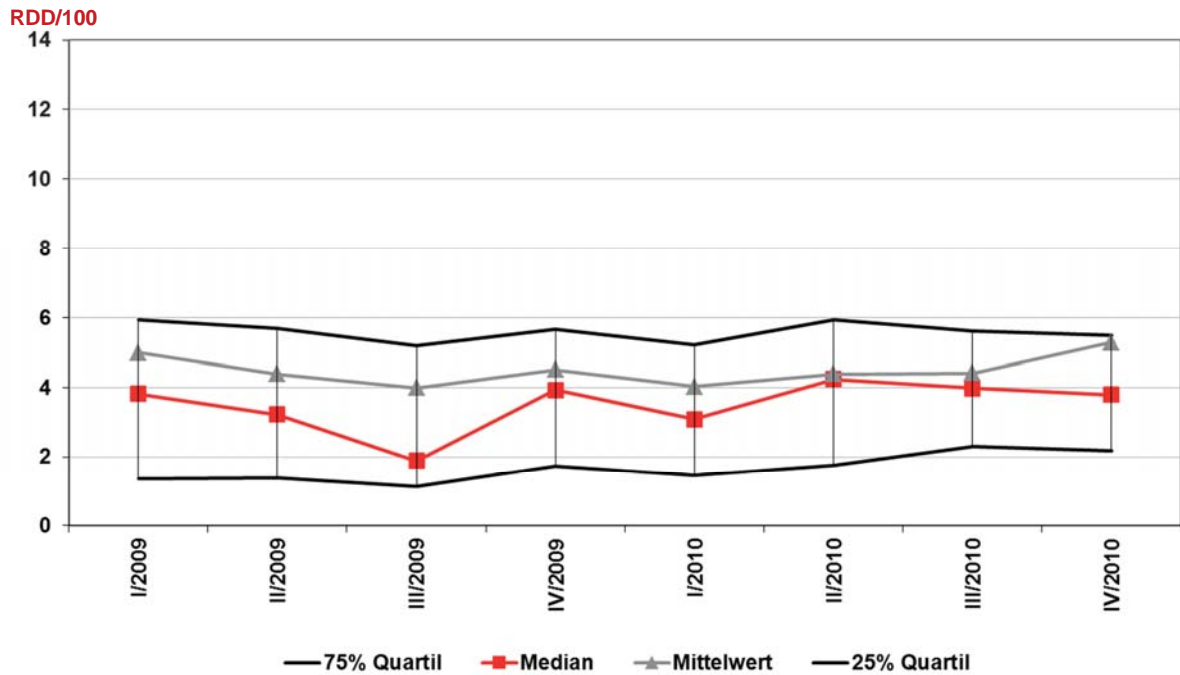
Internistische und andere konservative Normalstationen, > 800 Betten

KH-Vergleichsreport 2009-2010 "Normalstationen"

22 von 25

27/06/2011

Makrolide und Clindamycin



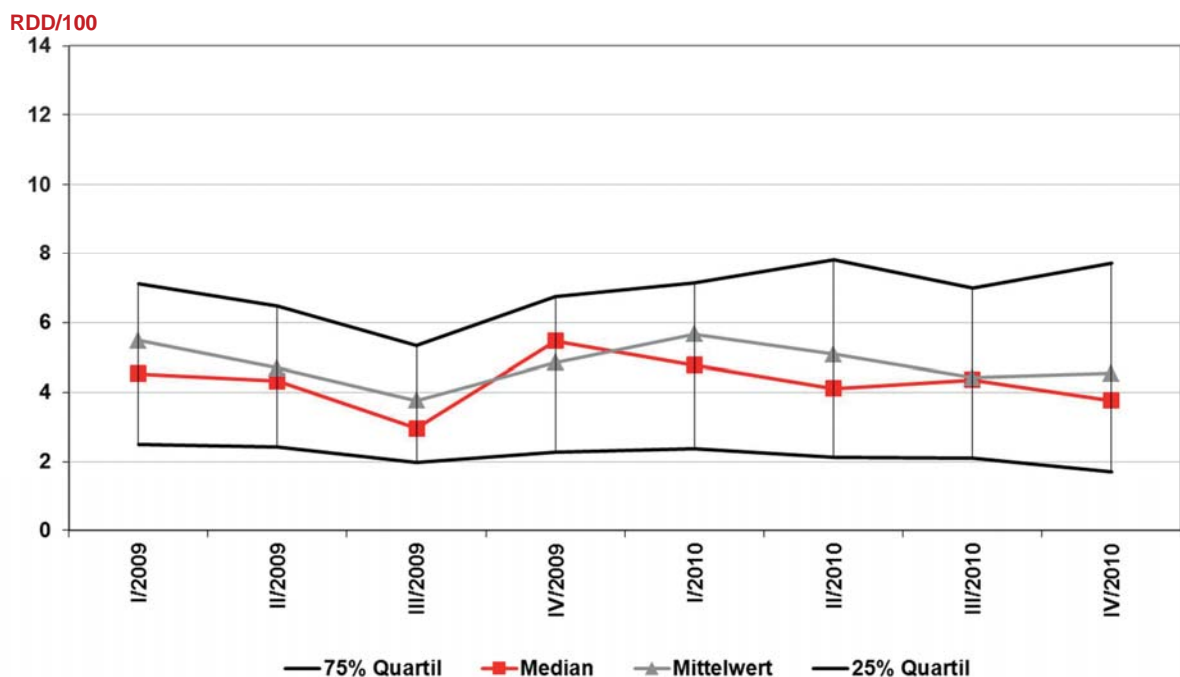
Internistische und andere konservative Normalstationen, < 400 Betten

KH-Vergleichsreport 2009-2010 "Normalstationen"

23 von 25

27/06/2011

Makrolide und Clindamycin



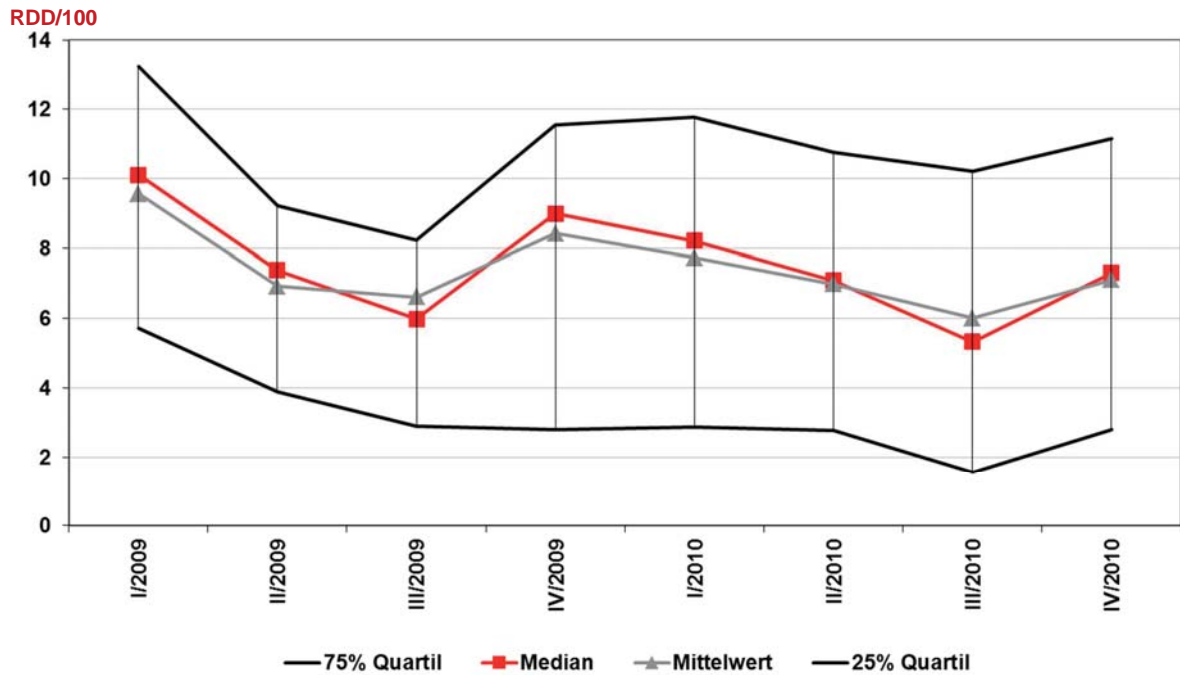
Internistische und andere konservative Normalstationen, 400-800 Betten

KH-Vergleichsreport 2009-2010 "Normalstationen"

24 von 25

27/06/2011

Makrolide und Clindamycin



Internistische und andere konservative Normalstationen, > 800 Betten

Krankenhausvergleichs-
Report

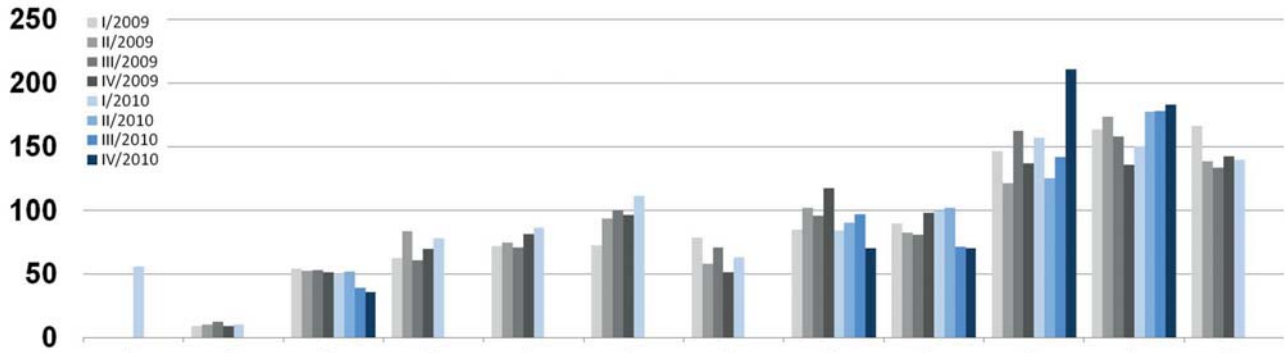
Jahre 2009 und 2010

Nur zum internen Gebrauch!



Antibiotika gesamt

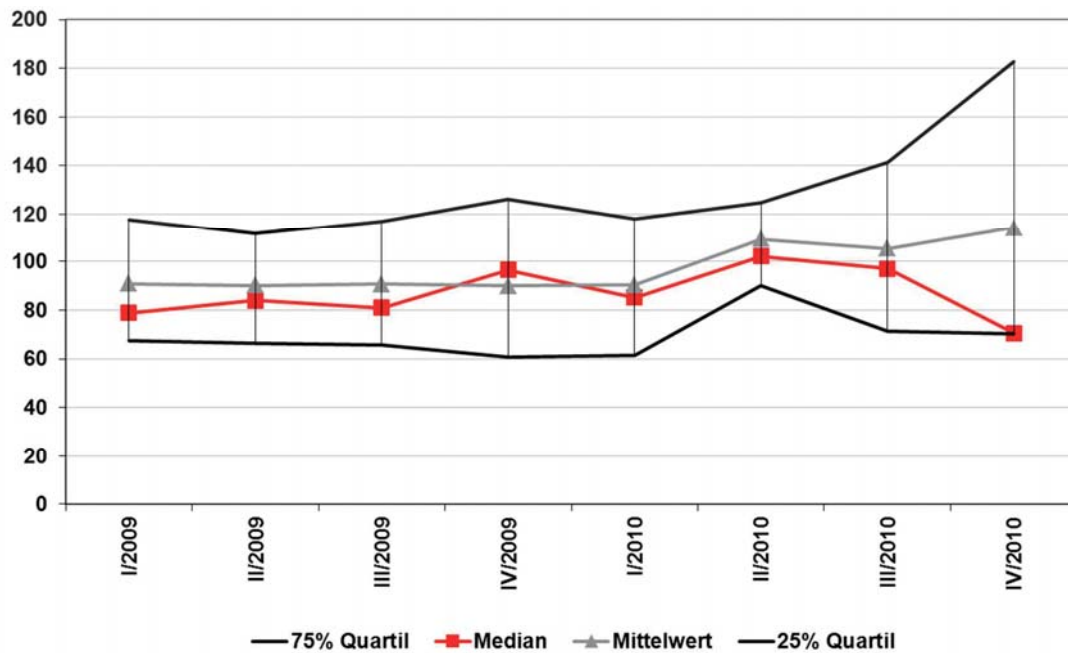
RDD/100



Chirurgische ICU, < 400 Betten

Antibiotika gesamt

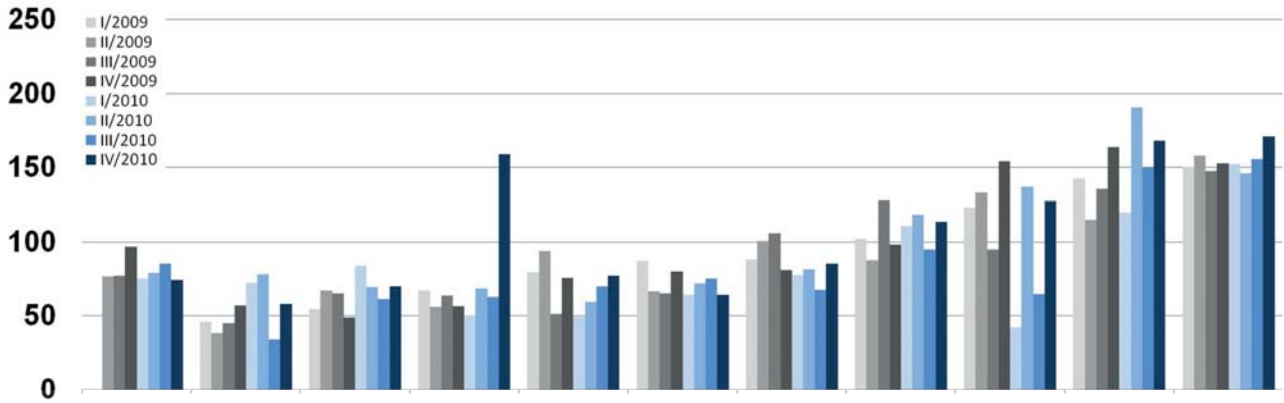
RDD/100



Chirurgische ICU, < 400 Betten

Antibiotika gesamt

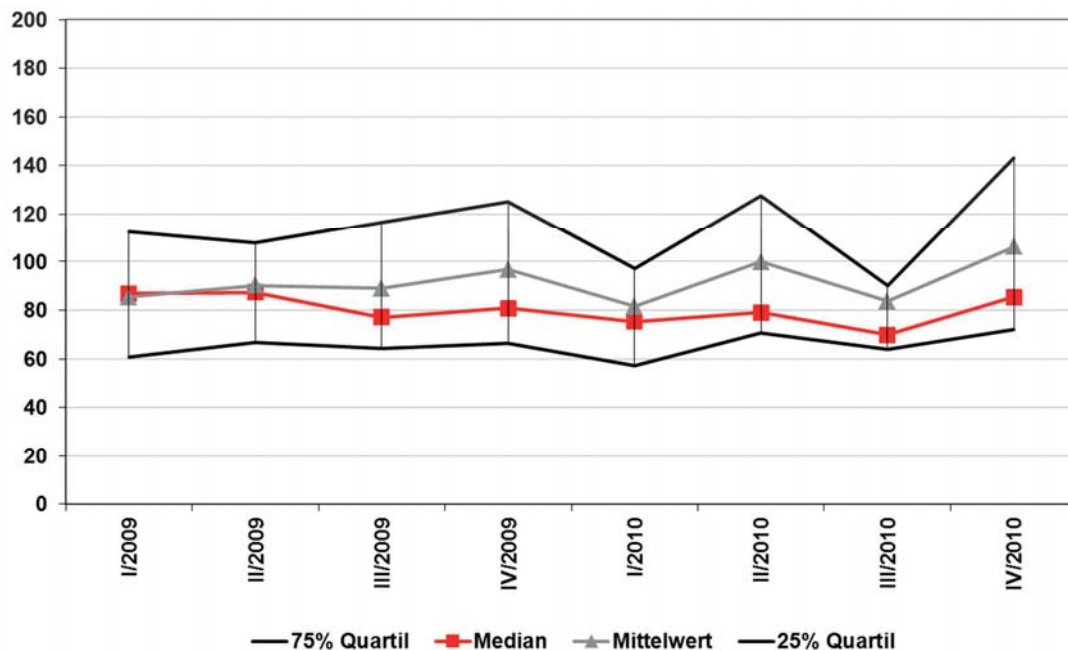
RDD/100



Chirurgische ICU, 400-800 Betten

Antibiotika gesamt

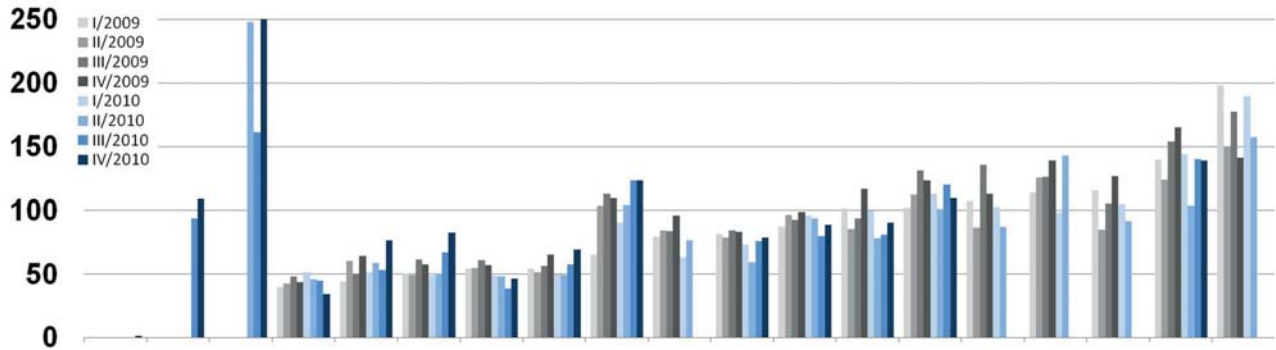
RDD/100



Chirurgische ICU, 400-800 Betten

Antibiotika gesamt

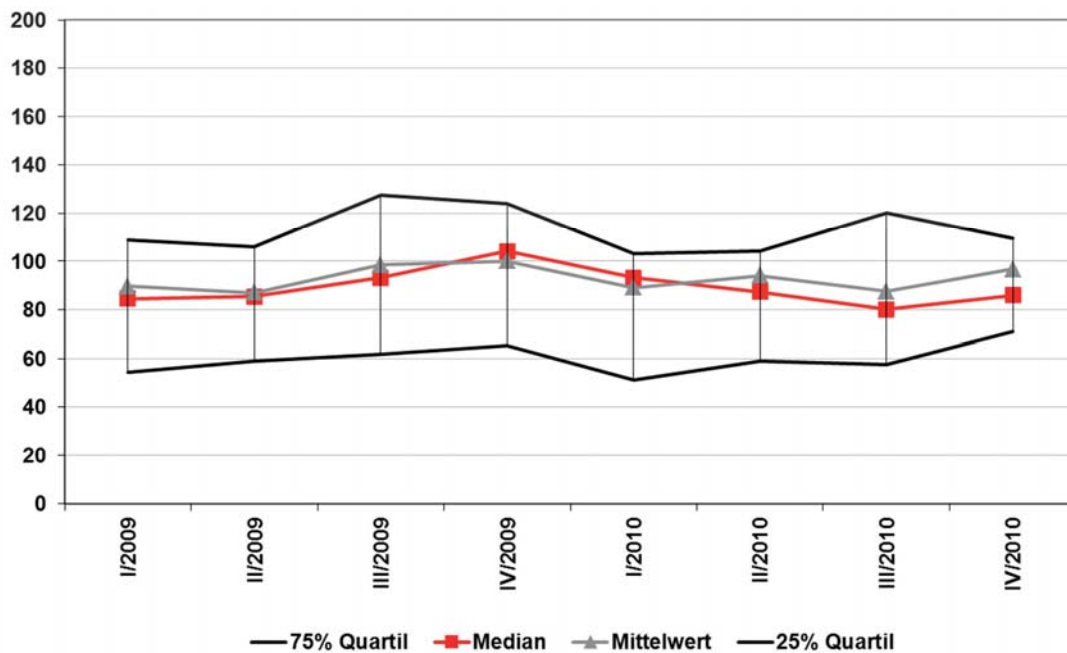
RDD/100



Chirurgische ICU, > 800 Betten

Antibiotika gesamt

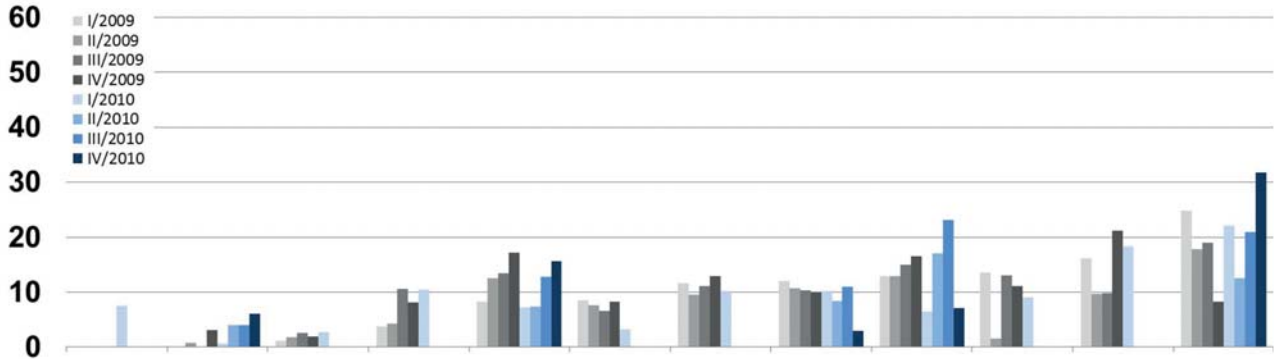
RDD/100



Chirurgische ICU, > 800 Betten

Fluorchinolone

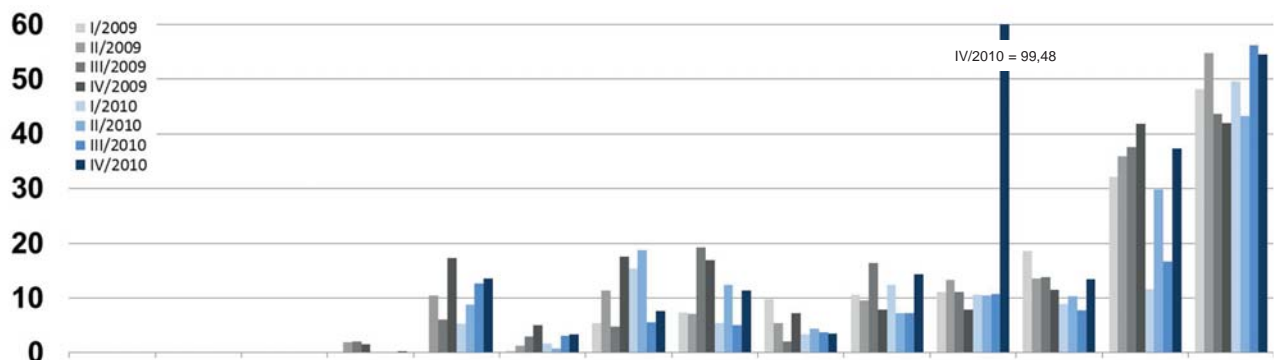
RDD/100



Chirurgische ICU, < 400 Betten

Fluorchinolone

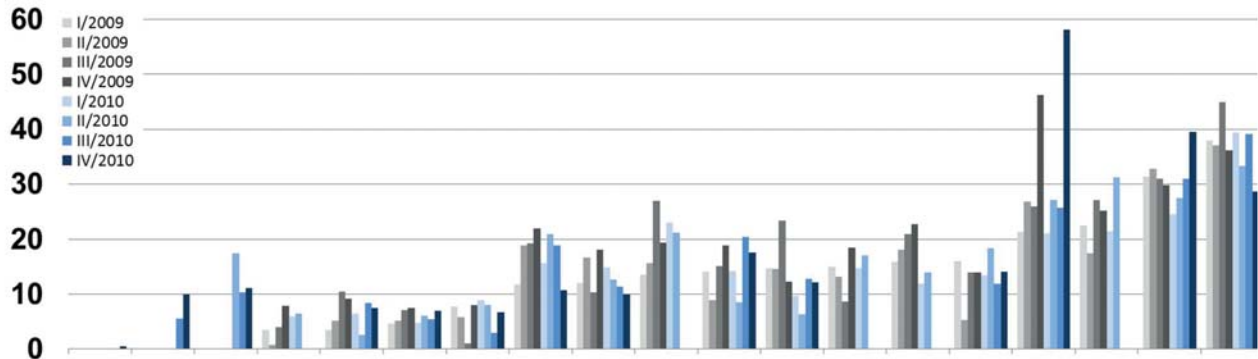
RDD/100



Chirurgische ICU, 400-800 Betten

Fluorchinolone

RDD/100



Chirurgische ICU, > 800 Betten

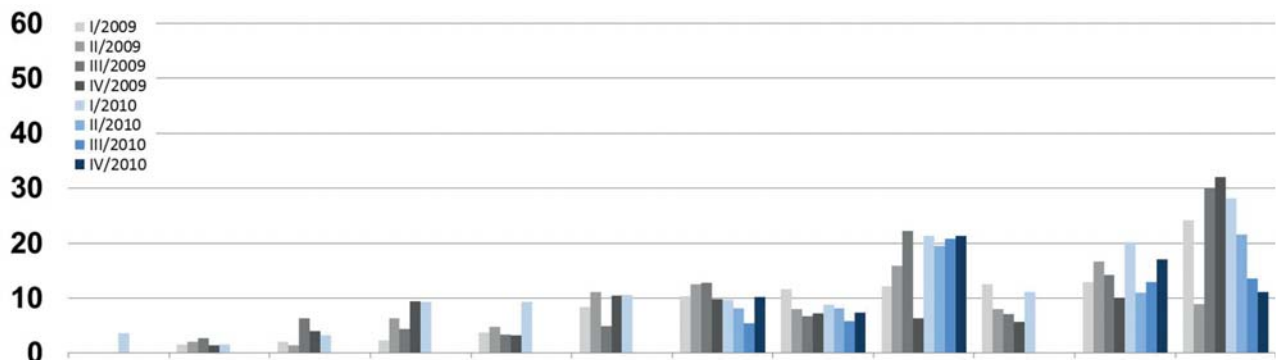
KH-Vergleichsreport 2009-2010 "Intensivstationen"

9 von 48

23/06/2011

Breitspektrumpenicilline

RDD/100



Chirurgische ICU, < 400 Betten

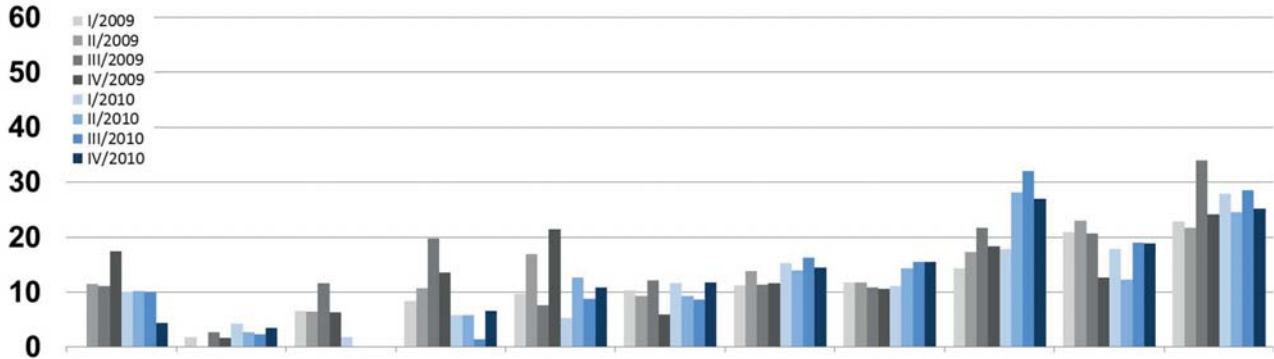
KH-Vergleichsreport 2009-2010 "Intensivstationen"

10 von 48

23/06/2011

Breitspektrumpenicilline

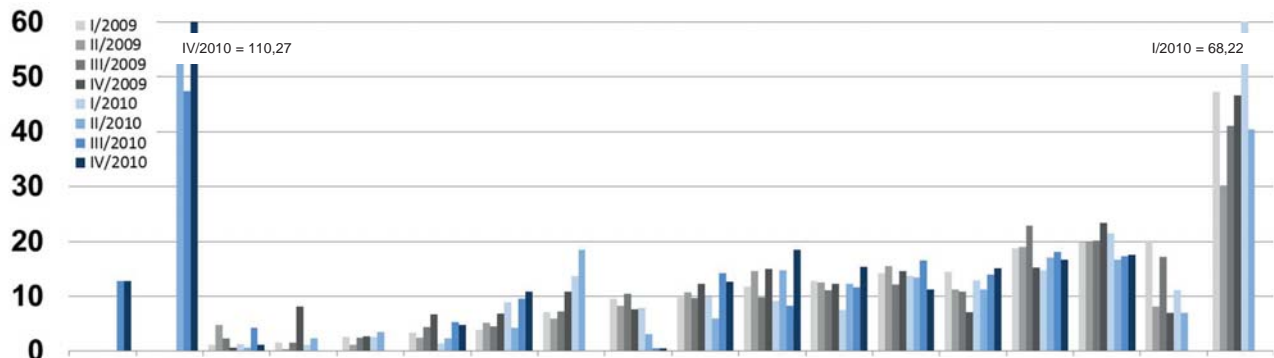
RDD/100



Chirurgische ICU, 400-800 Betten

Breitspektrumpenicilline

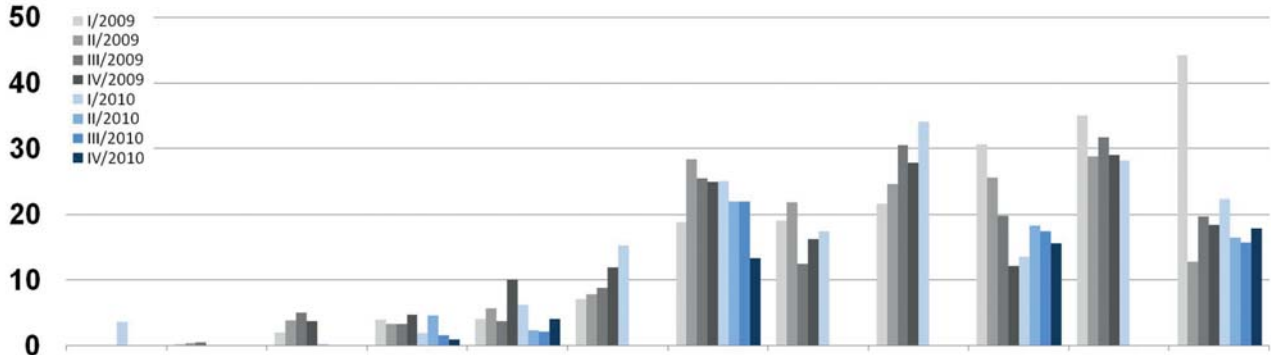
RDD/100



Chirurgische ICU, > 800 Betten

3. Generations-Cephalosporine

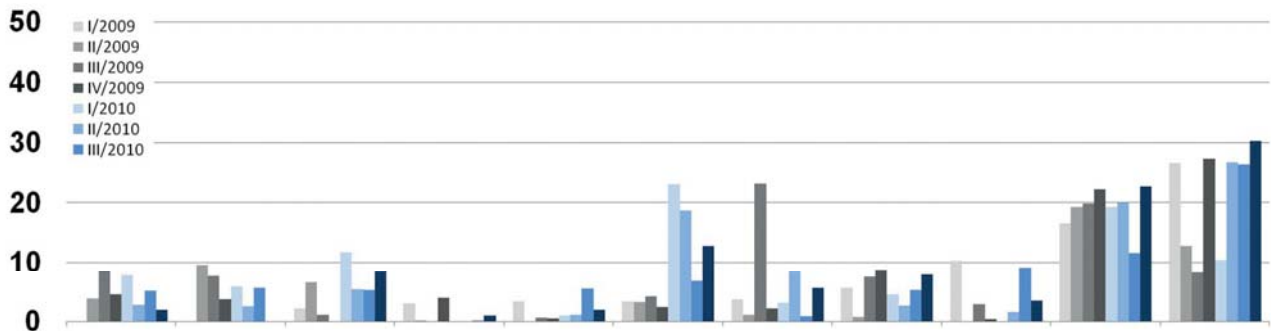
RDD/100



Chirurgische ICU, < 400 Betten

3. Generations-Cephalosporine

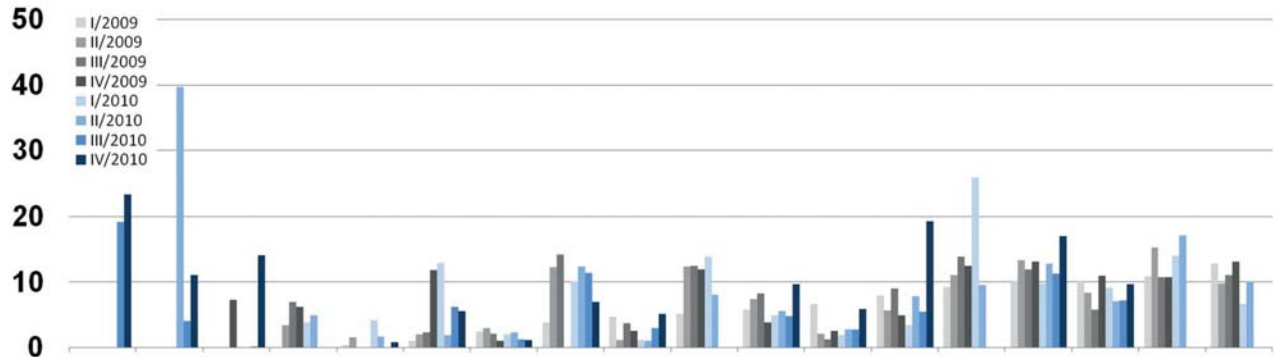
RDD/100



Chirurgische ICU, 400-800 Betten

3. Generations-Cephalosporine

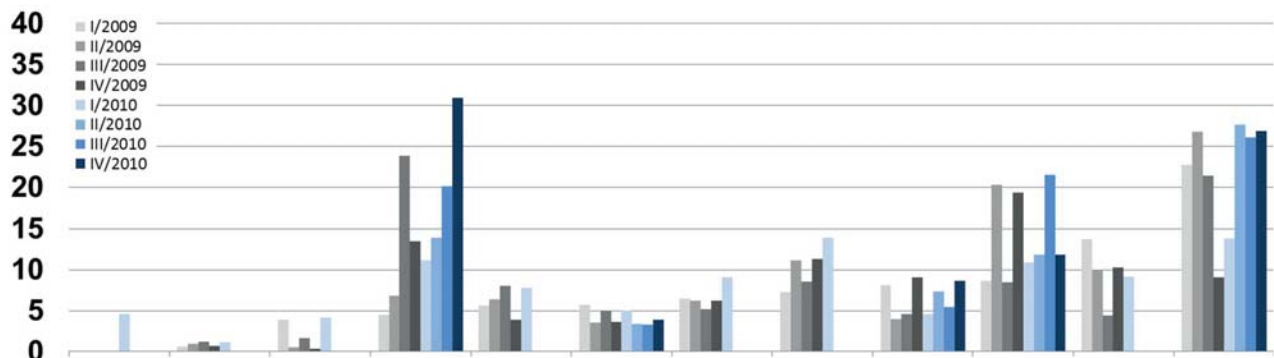
RDD/100



Chirurgische ICU, > 800 Betten

Carbapeneme

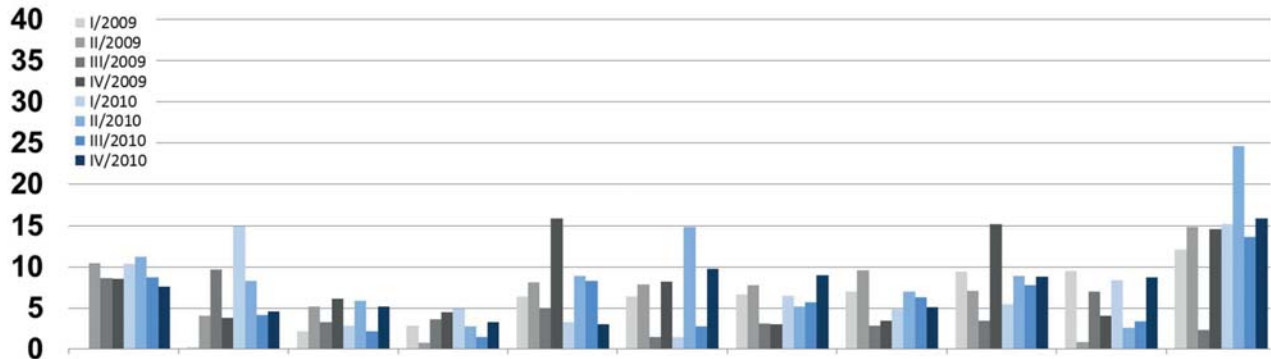
RDD/100



Chirurgische ICU, < 400 Betten

Carbapeneme

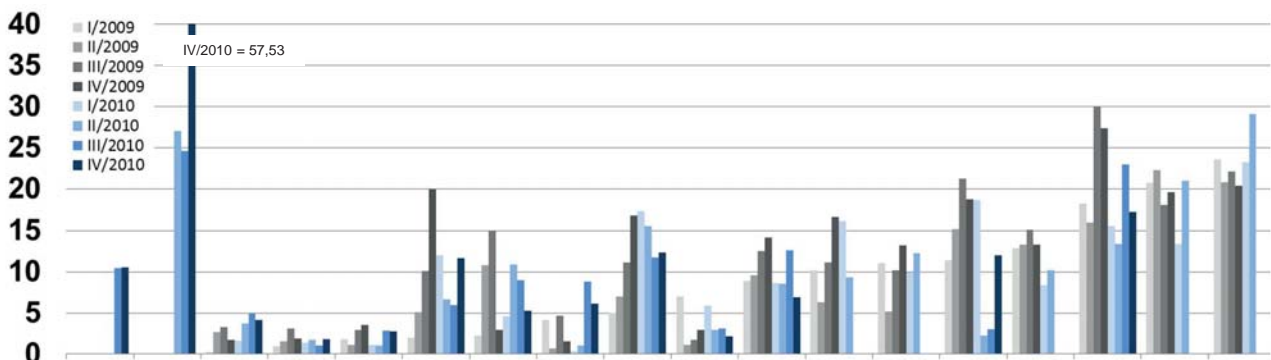
RDD/100



Chirurgische ICU, 400-800 Betten

Carbapeneme

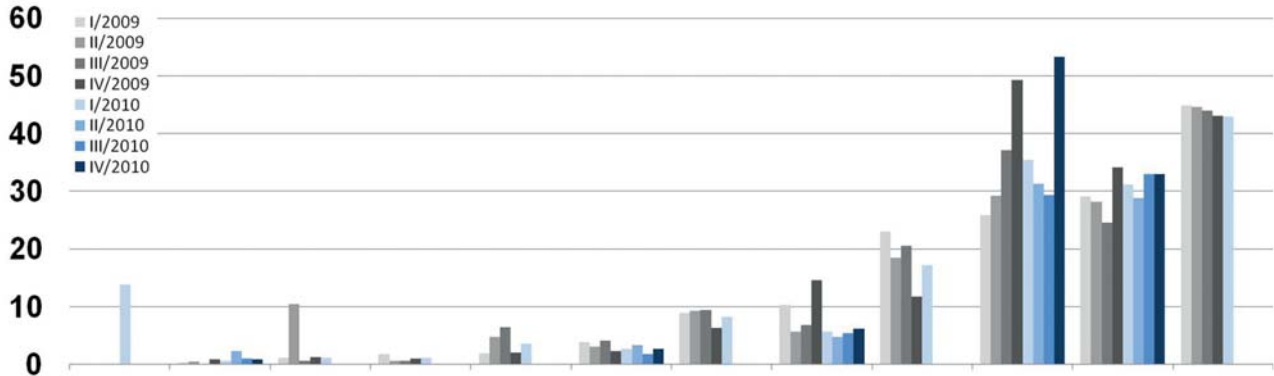
RDD/100



Chirurgische ICU, > 800 Betten

1./2. Generations-Cephalosporine

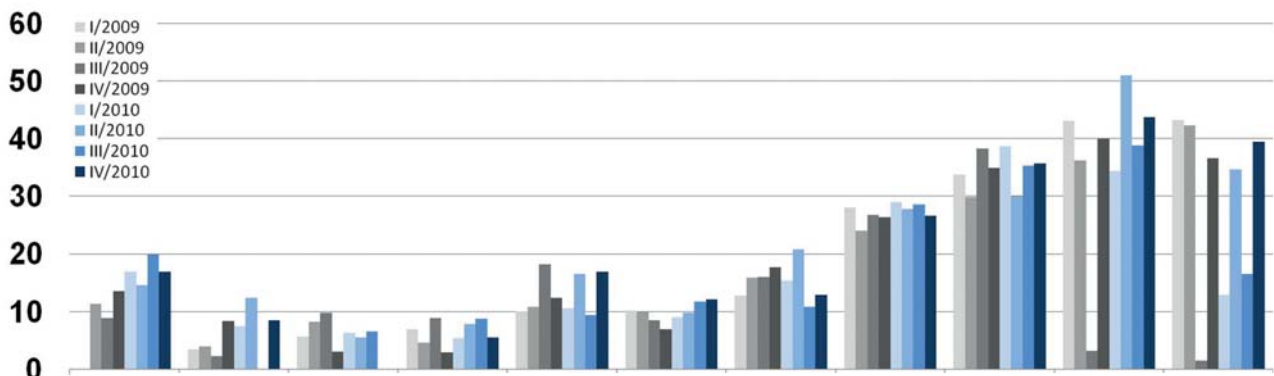
RDD/100



Chirurgische ICU, < 400 Betten

1./2. Generations-Cephalosporine

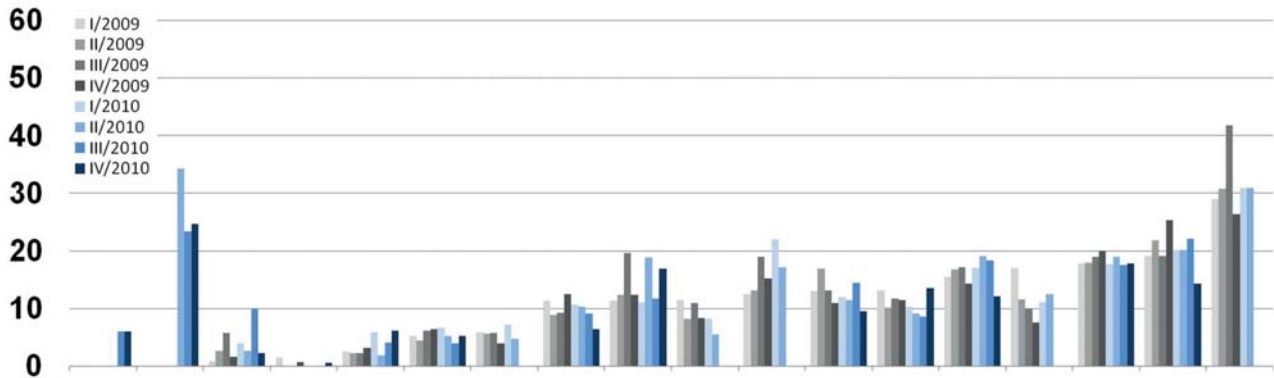
RDD/100



Chirurgische ICU, 400-800 Betten

1./2. Generations-Cephalosporine

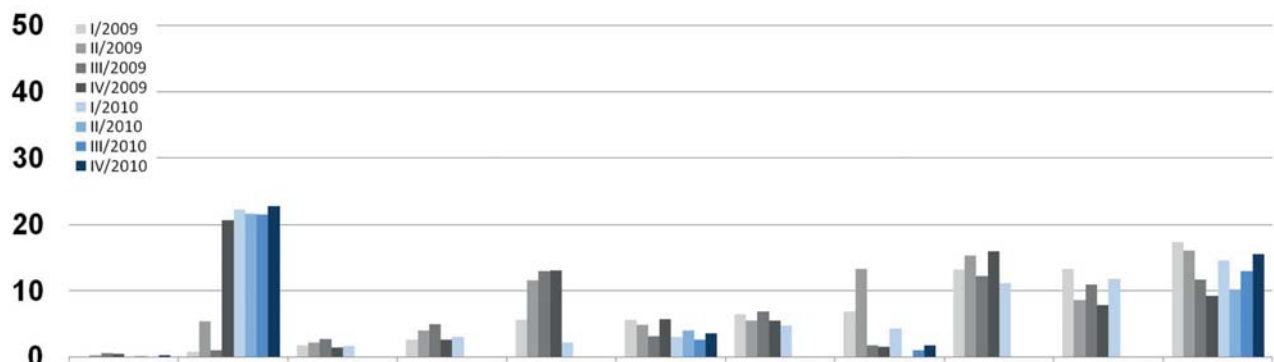
RDD/100



Chirurgische ICU, > 800 Betten

Aminopenicilline/BLH

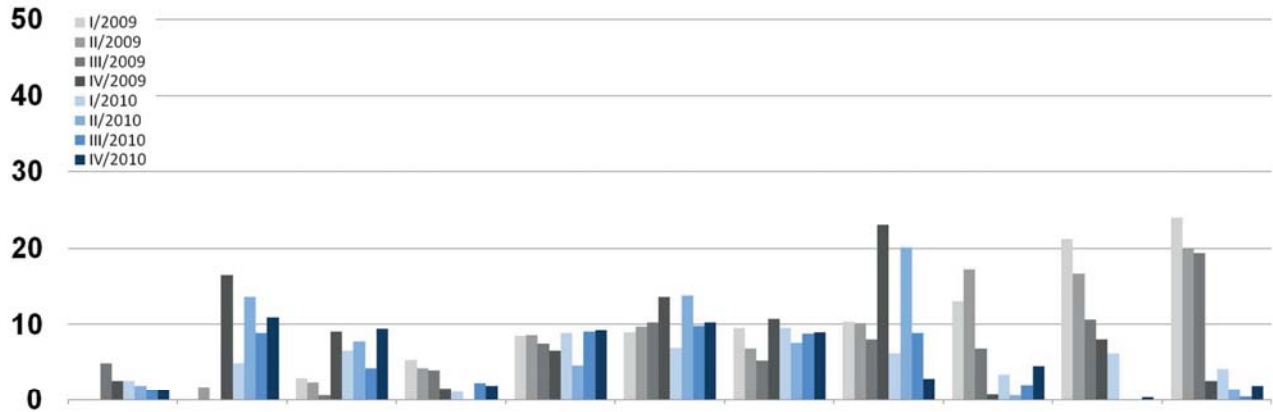
RDD/100



Chirurgische ICU, < 400 Betten

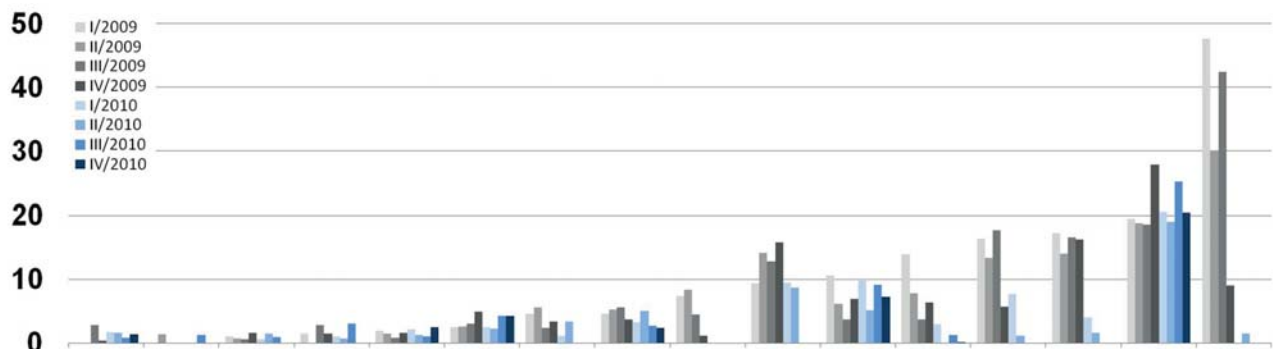
Aminopenicilline/BLH

RDD/100



Aminopenicilline/BLH

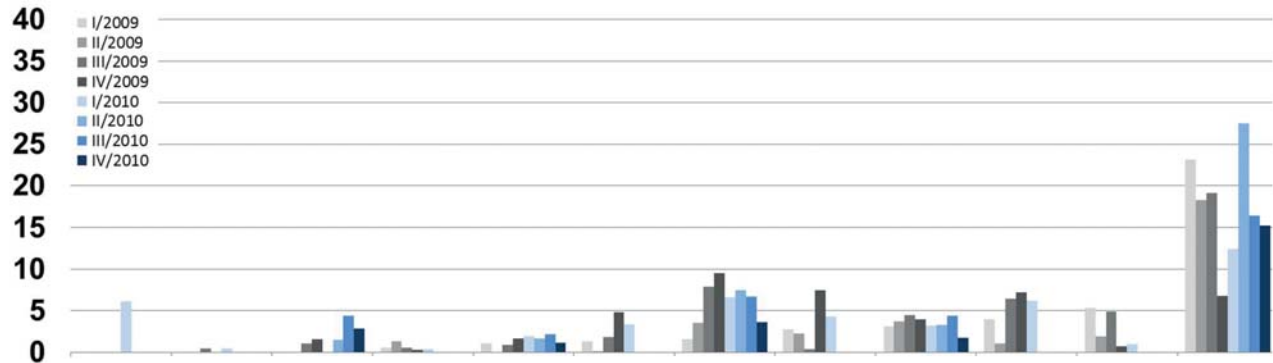
RDD/100



Chirurgische ICU, > 800 Betten

Makrolide und Clindamycin

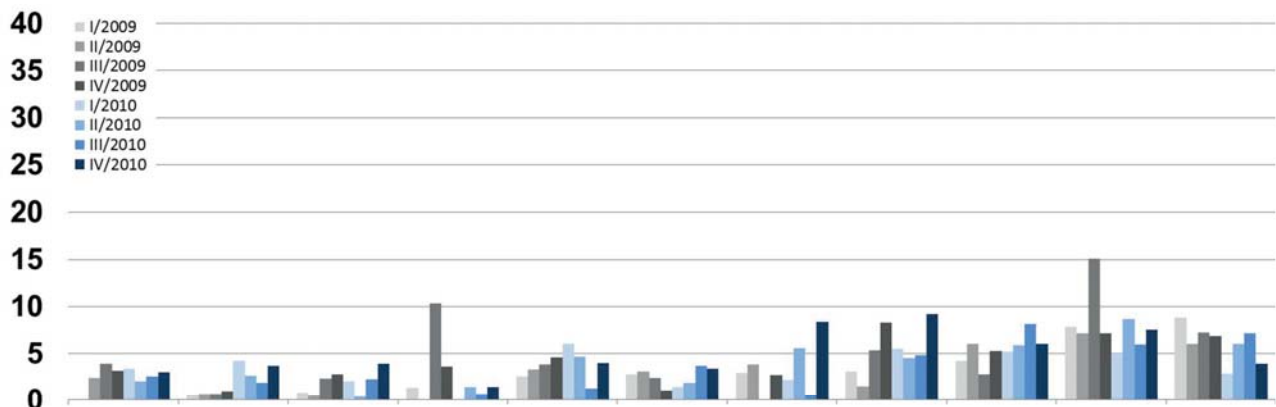
RDD/100



Chirurgische ICU, < 400 Betten

Makrolide und Clindamycin

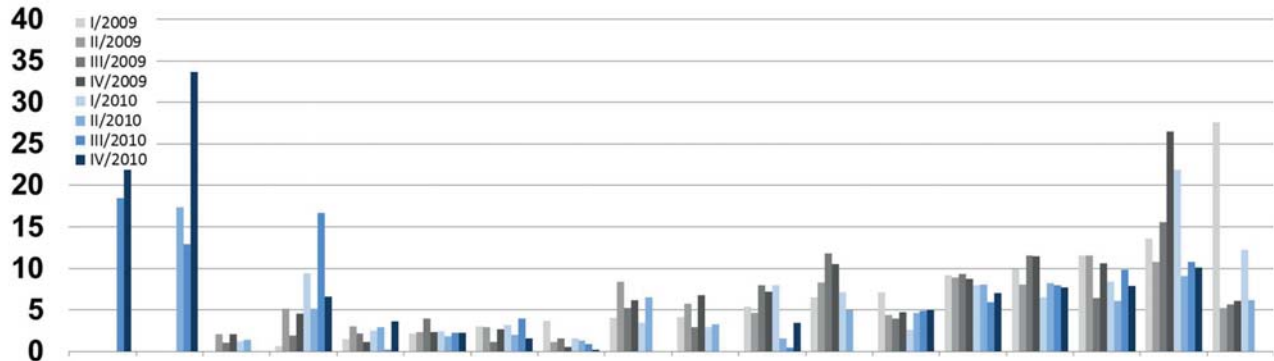
RDD/100



Chirurgische ICU, 400-800 Betten

Makrolide und Clindamycin

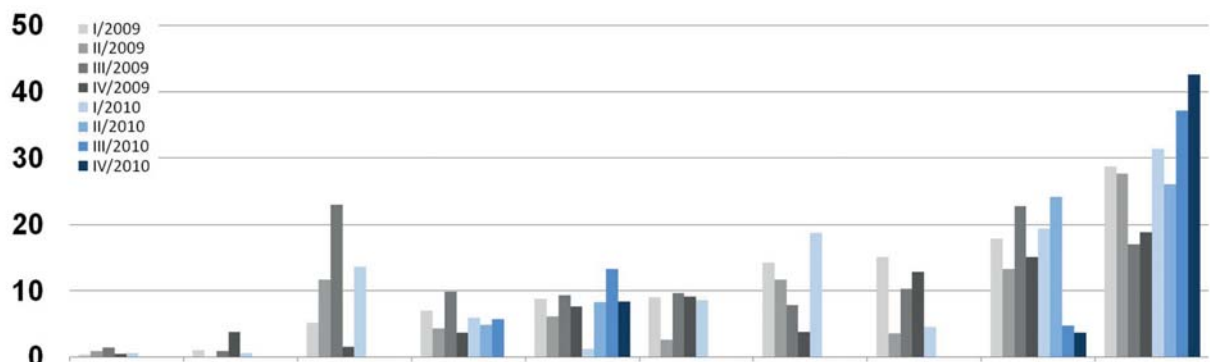
RDD/100



Chirurgische ICU, > 800 Betten

Antimykotika systemisch gesamt

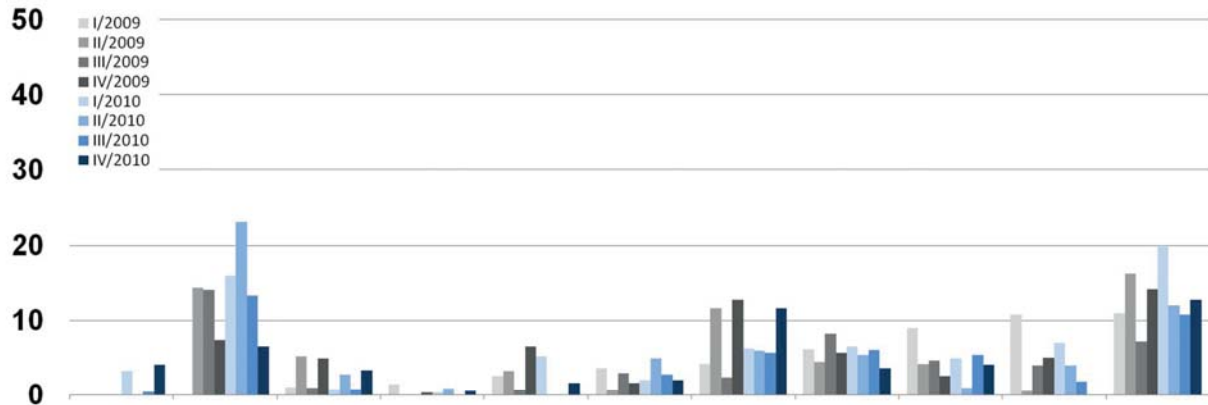
RDD/100



Chirurgische ICU, < 400 Betten

Antimykotika systemisch gesamt

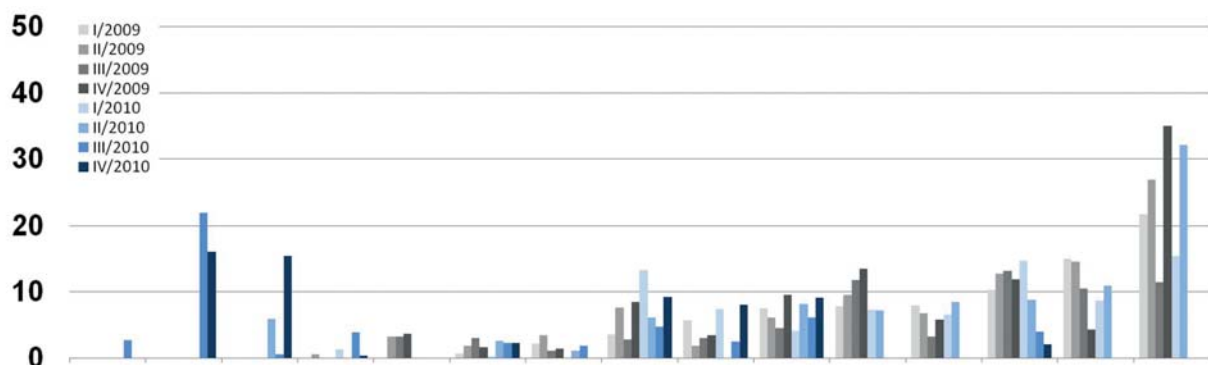
RDD/100



Chirurgische ICU, 400-800 Betten

Antimykotika systemisch gesamt

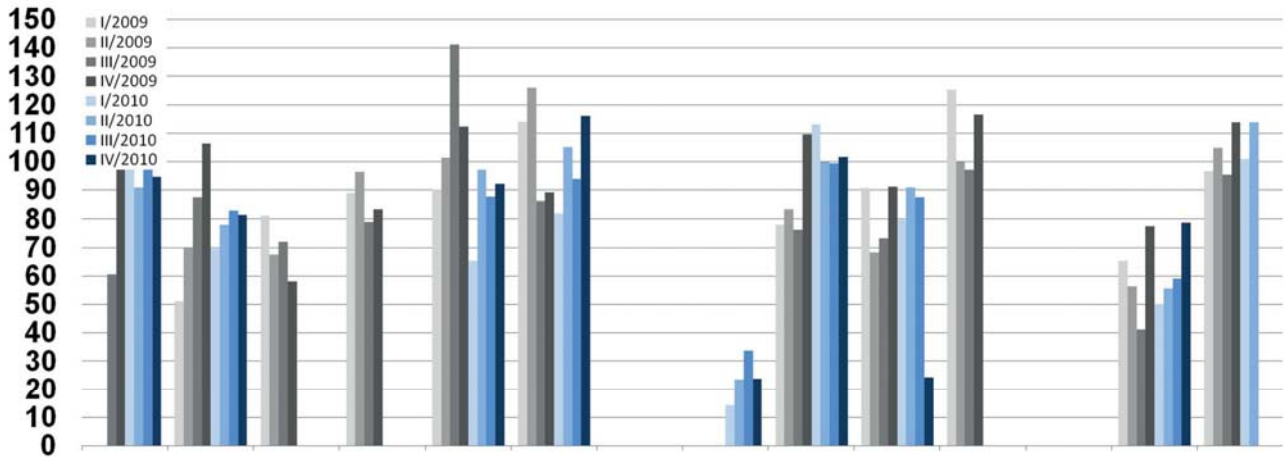
RDD/100



Chirurgische ICU, > 800 Betten

Antibiotika gesamt

RDD/100



< 400

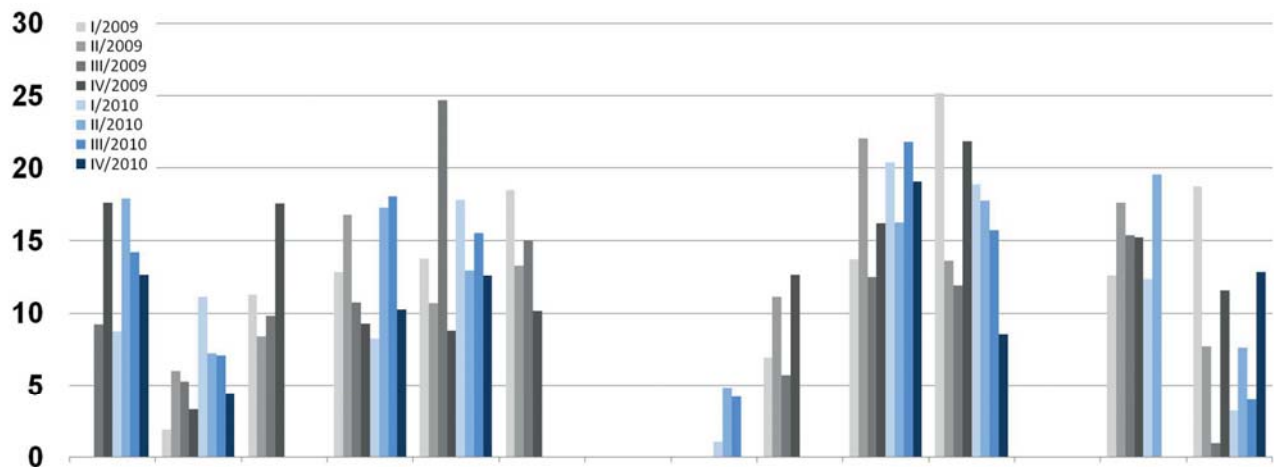
400-800

> 800

andere OPF ICU

Fluorchinolone

RDD/100



< 400

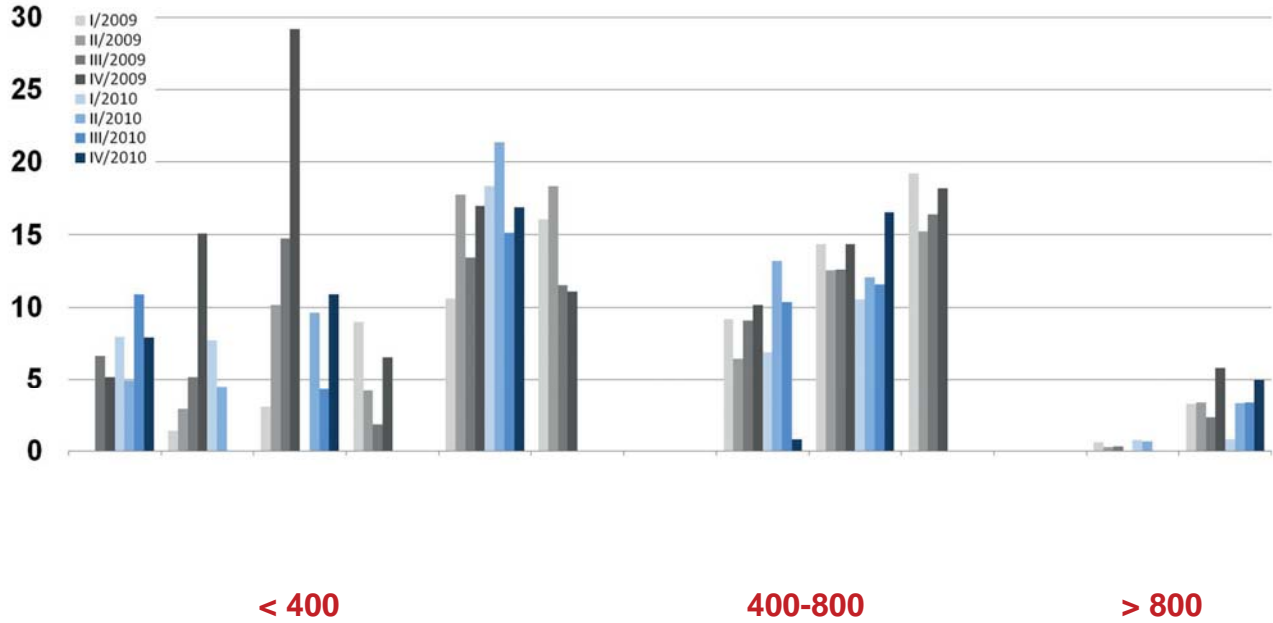
400-800

> 800

andere OPF ICU

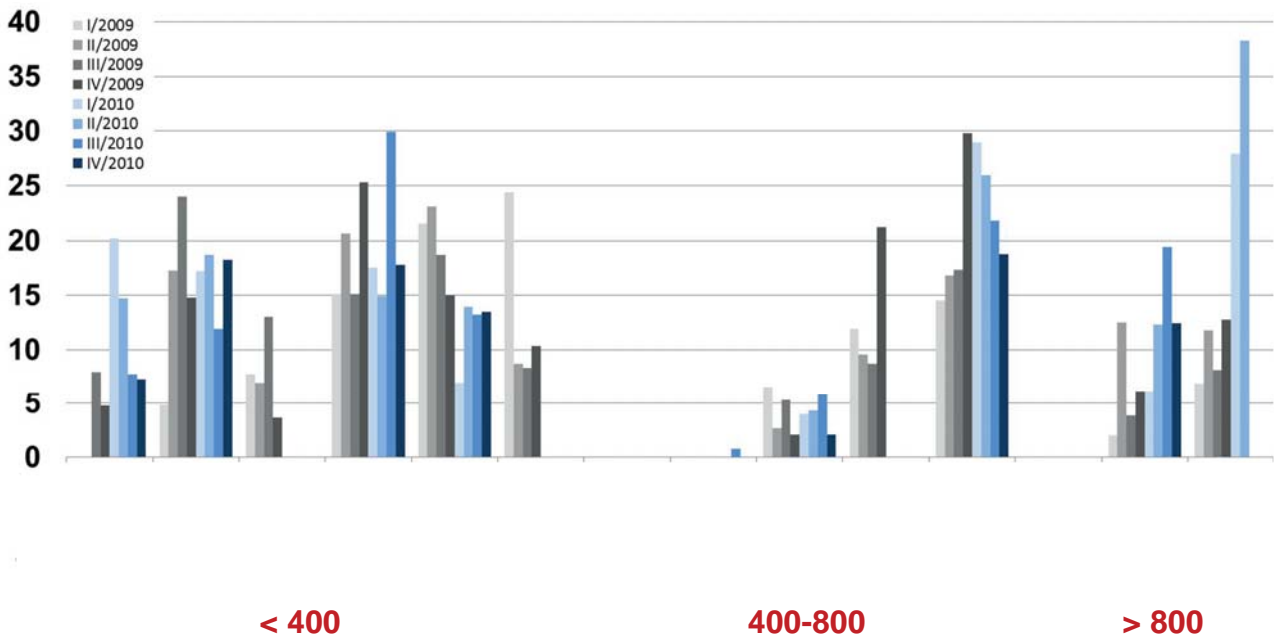
Breitspektrumpenicilline

RDD/100



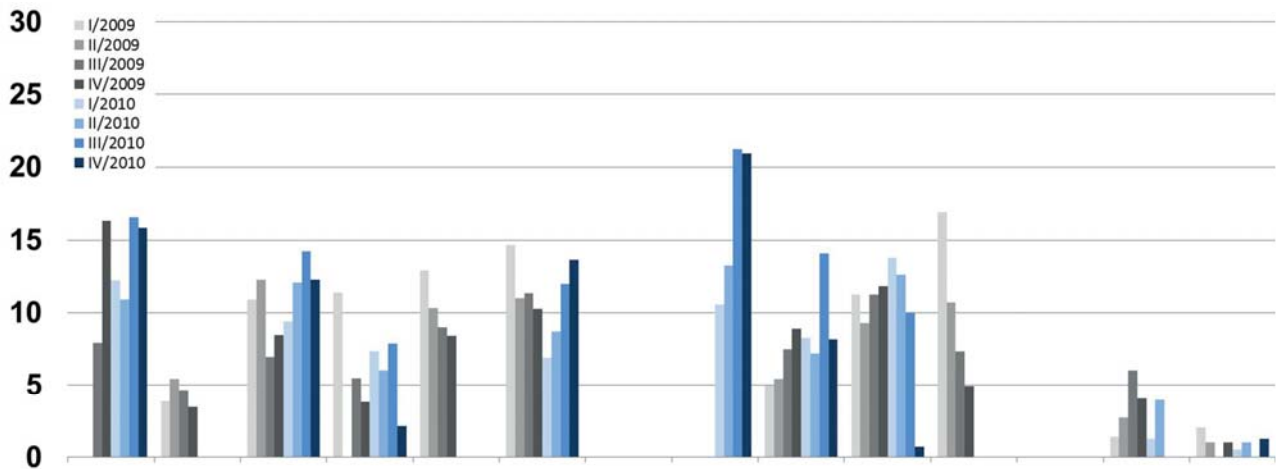
3. Generations-Cephalosporine

RDD/100



Carbapeneme

RDD/100



< 400

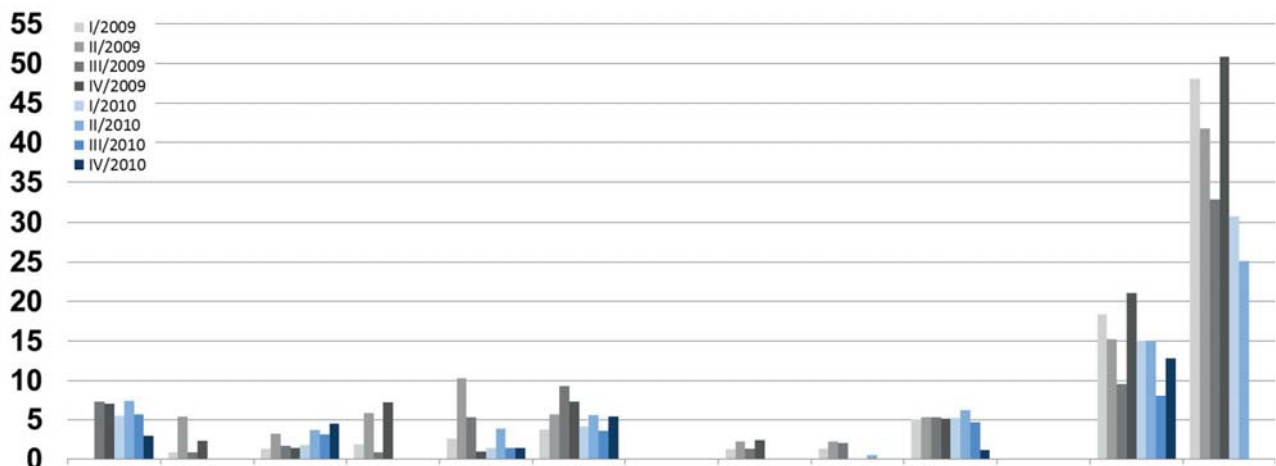
400-800

> 800

andere OPF ICU

1./2. Generations-Cephalosporine

RDD/100



< 400

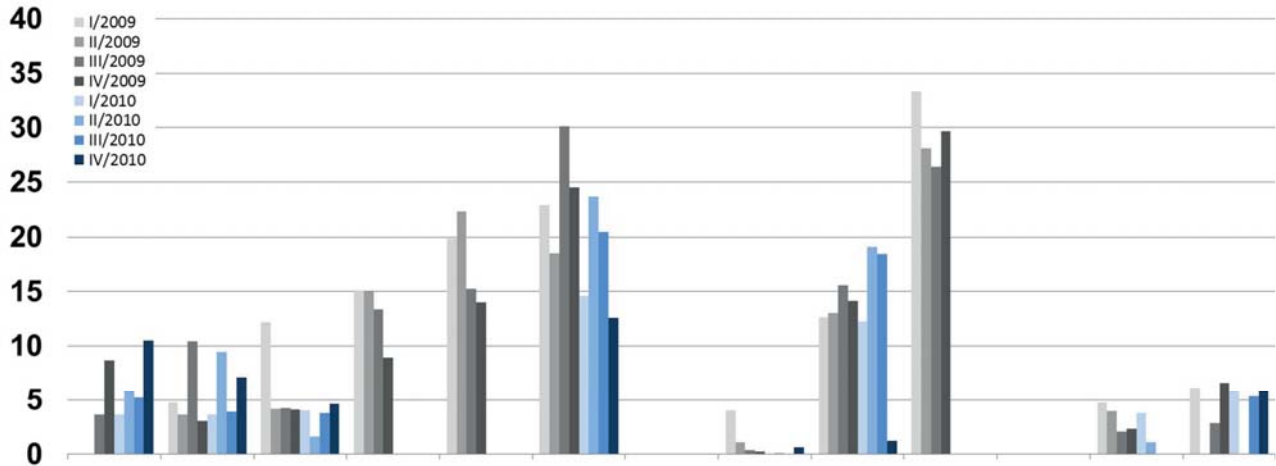
400-800

> 800

andere OPF ICU

Aminopenicilline/BLH

RDD/100



< 400

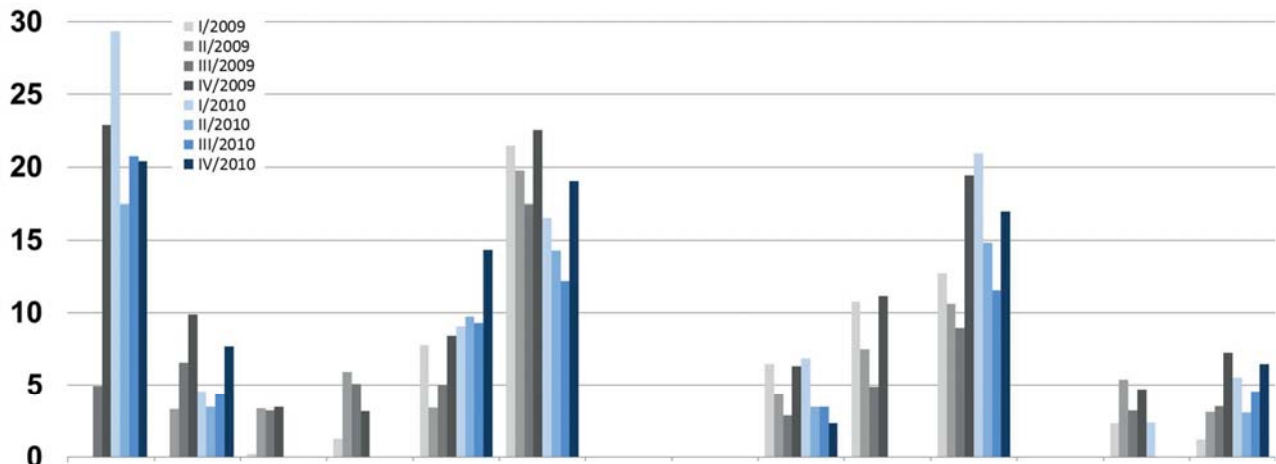
400-800

> 800

andere OPF ICU

Makrolide und Clindamycin

RDD/100



< 400

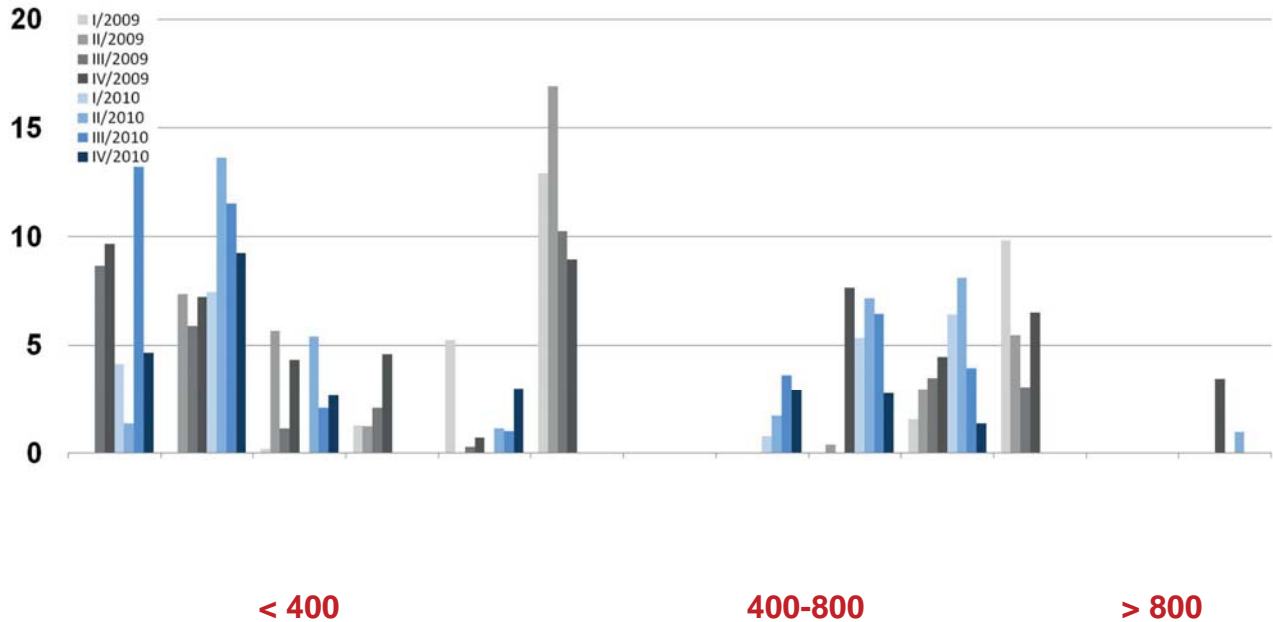
400-800

> 800

andere OPF ICU

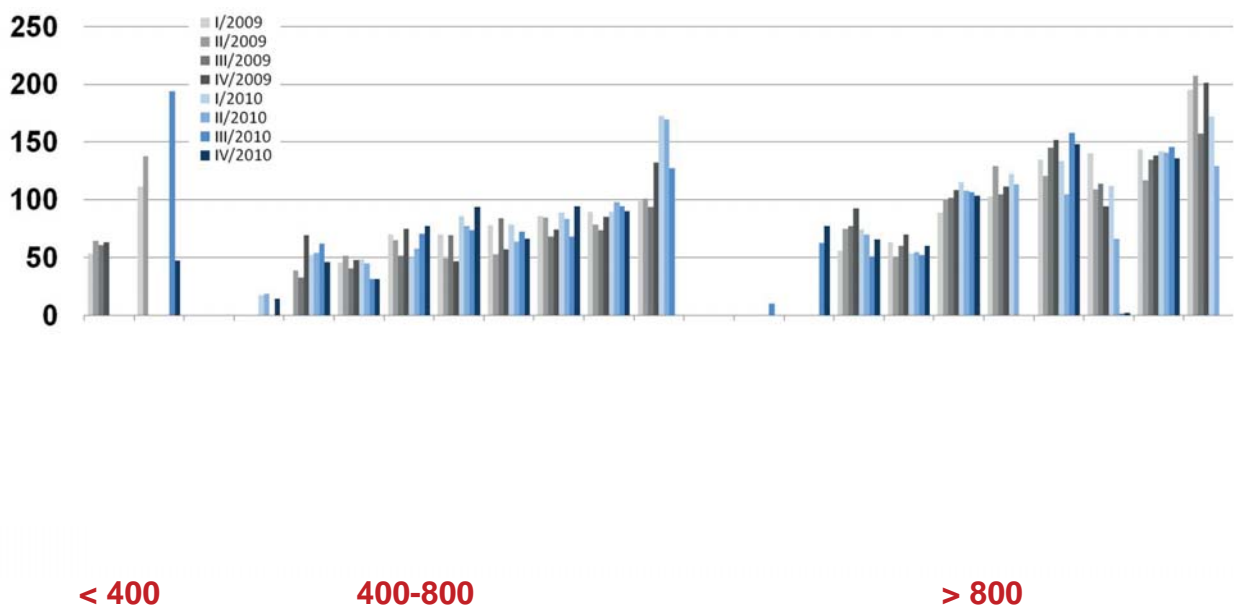
Antimykotika systemisch gesamt

RDD/100

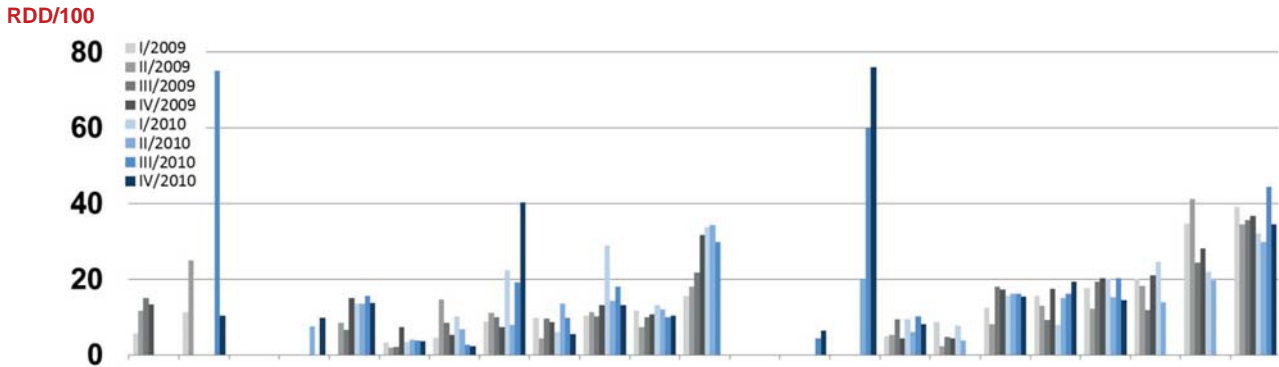


Antibiotika gesamt

RDD/100



Fluorchinolone



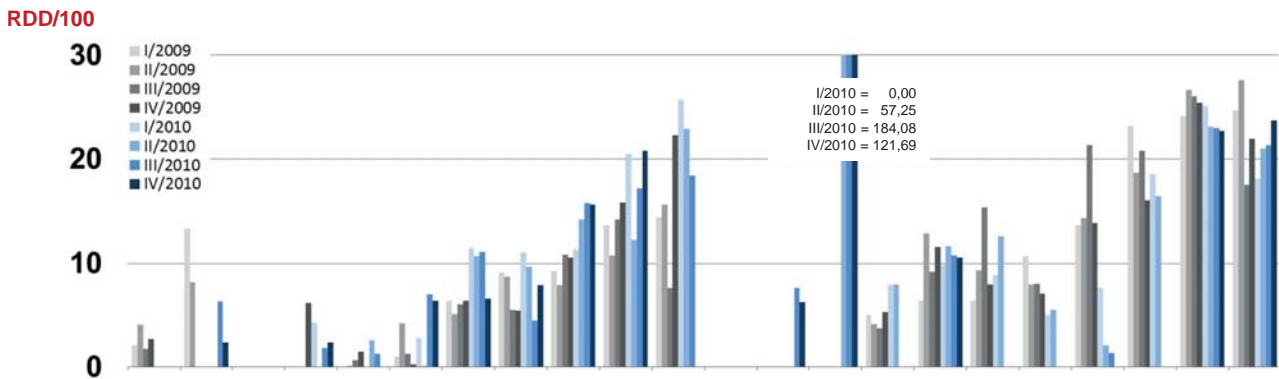
< 400

400-800

> 800

IM ICU und andere konservative ICU

Breitspektrumpenicilline



< 400

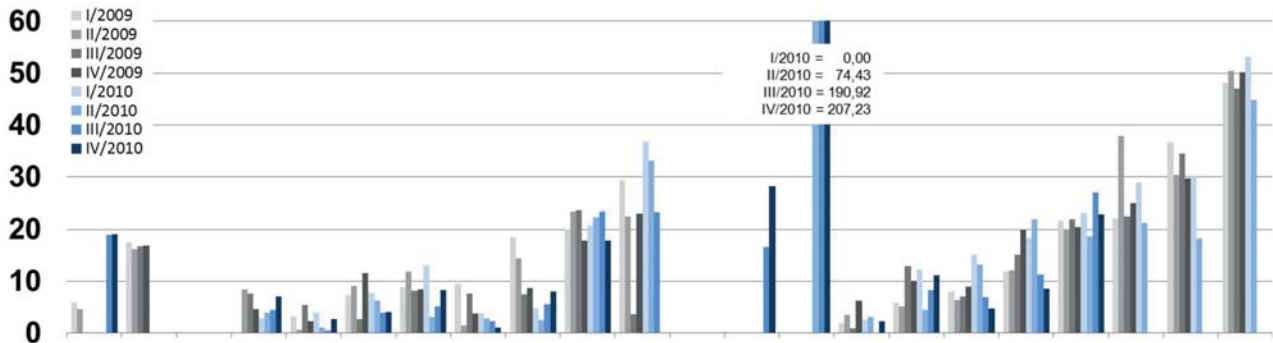
400-800

> 800

IM ICU und andere konservative ICU

3. Generations-Cephalosporine

RDD/100



< 400

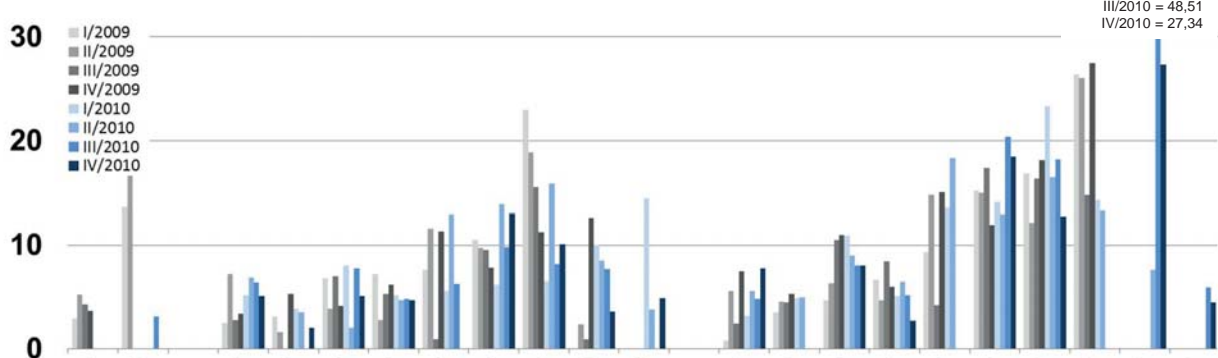
400-800

> 800

IM ICU und andere konservative ICU

Carbapeneme

RDD/100



< 400

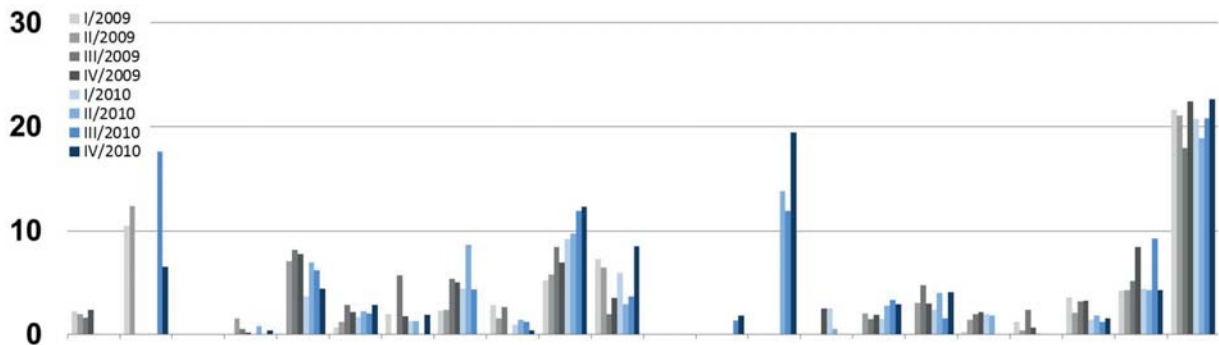
400-800

> 800

IM ICU und andere konservative ICU

1./2. Generations-Cephalosporine

RDD/100



< 400

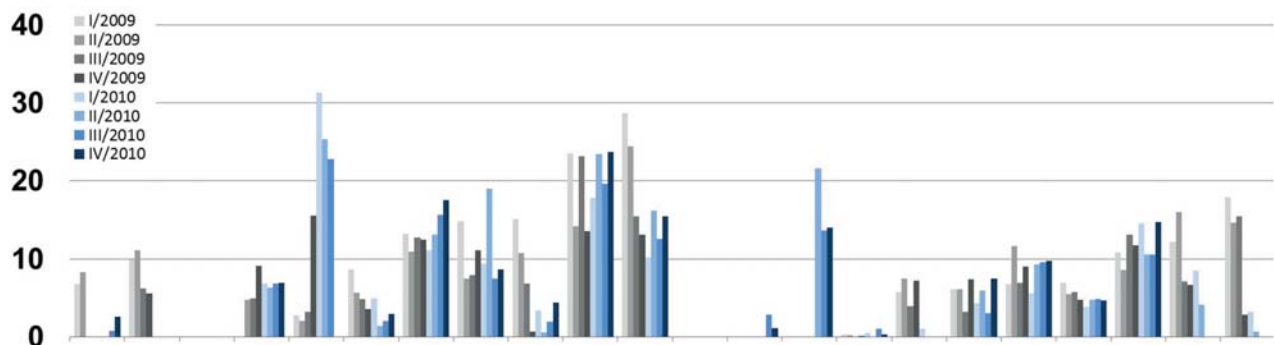
400-800

> 800

IM ICU und andere konservative ICU

Aminopenicilline/BLH

RDD/100



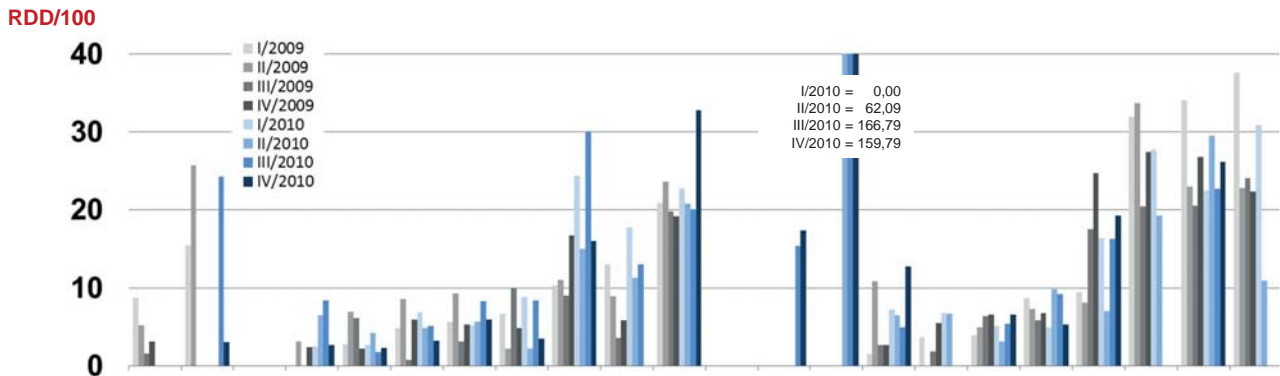
< 400

400-800

> 800

IM ICU und andere konservative ICU

Makrolide und Clindamycin



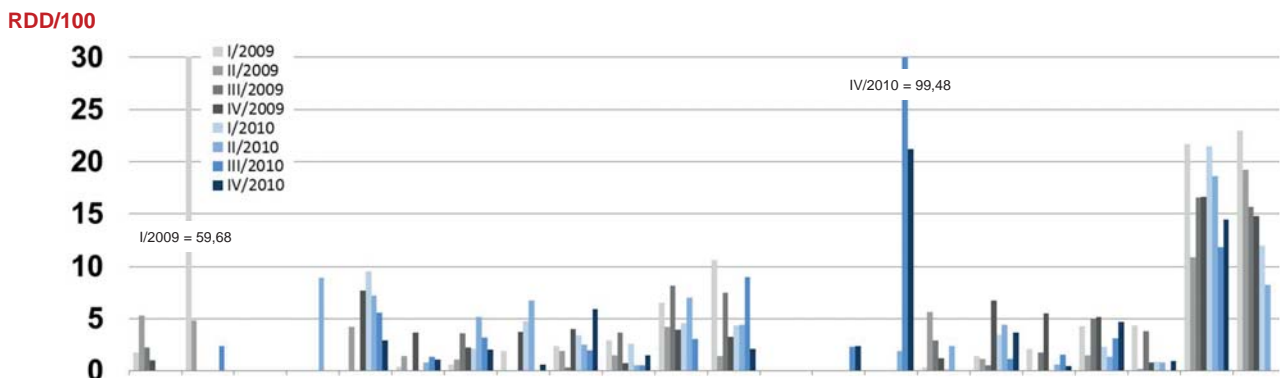
< 400

400-800

> 800

IM ICU und andere konservative ICU

Antimykotika systemisch gesamt



< 400

400-800

> 800

IM ICU und andere konservative ICU

Krankenhausvergleichs- Report

Jahre 2009 und 2010

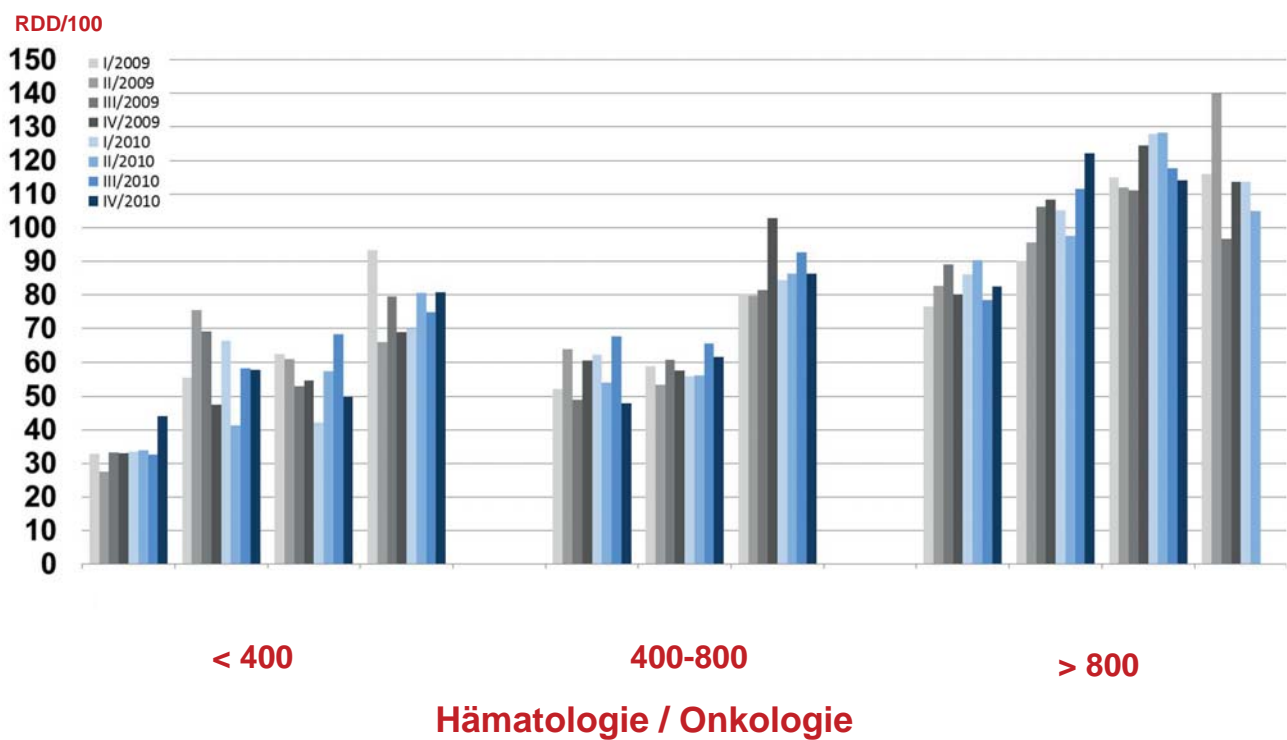
Nur zum internen Gebrauch!



ROBERT KOCH INSTITUT

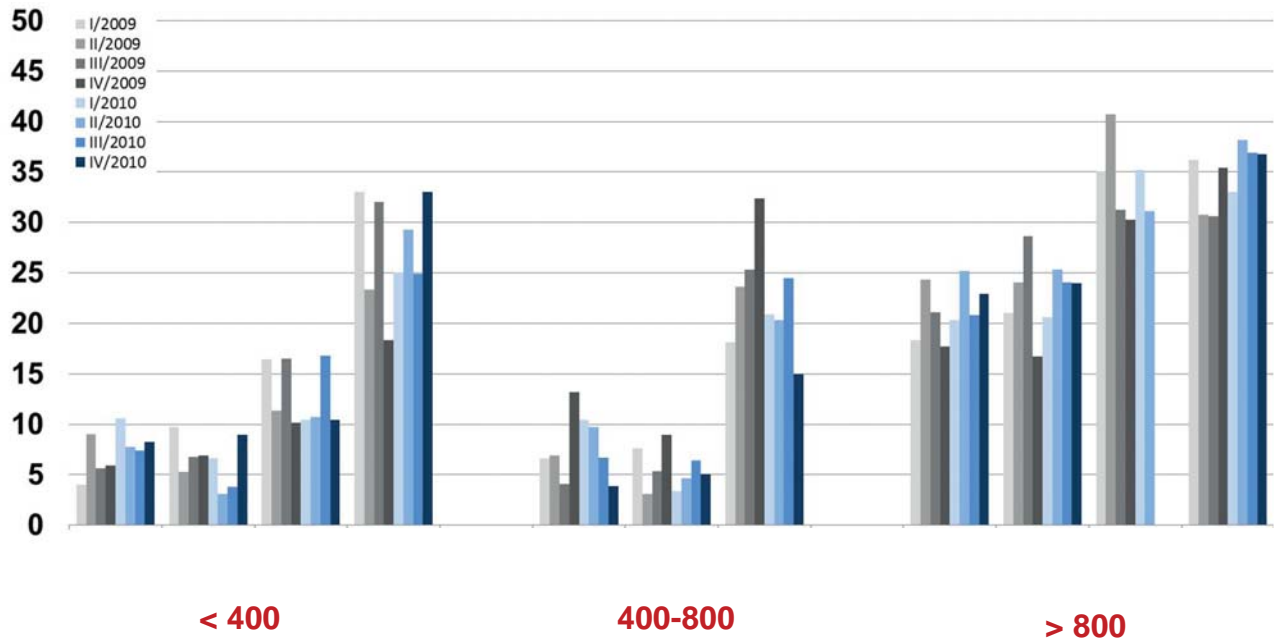


Antibiotika gesamt



Fluorchinolone

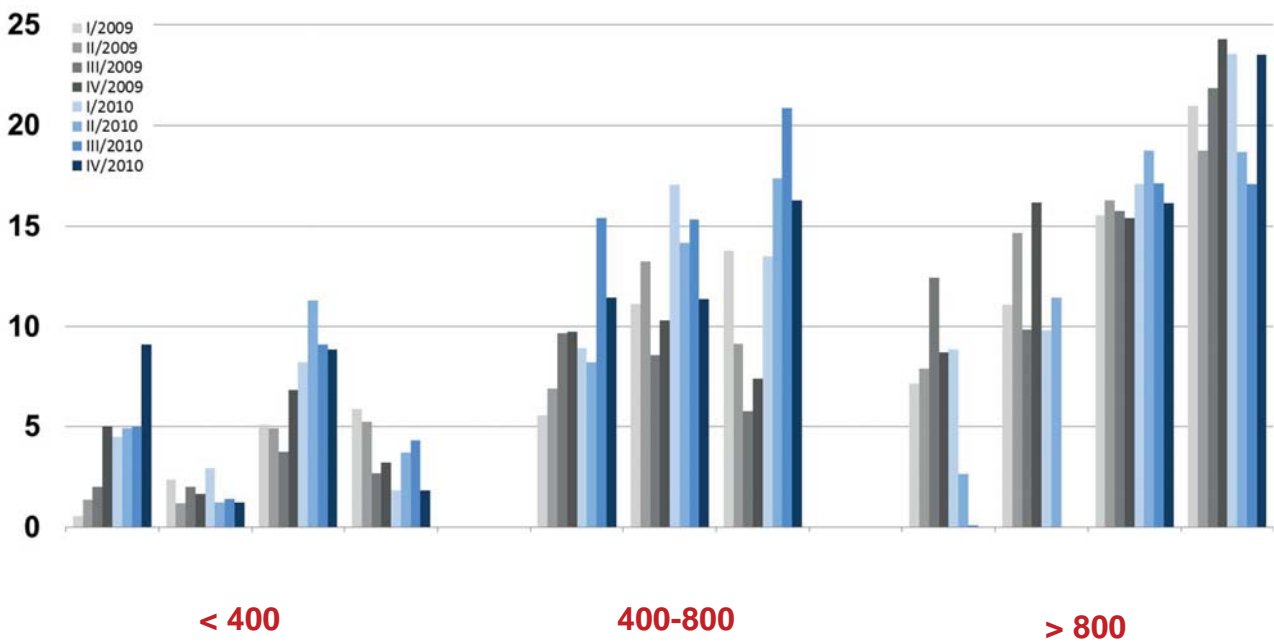
RDD/100



Hämatologie / Onkologie

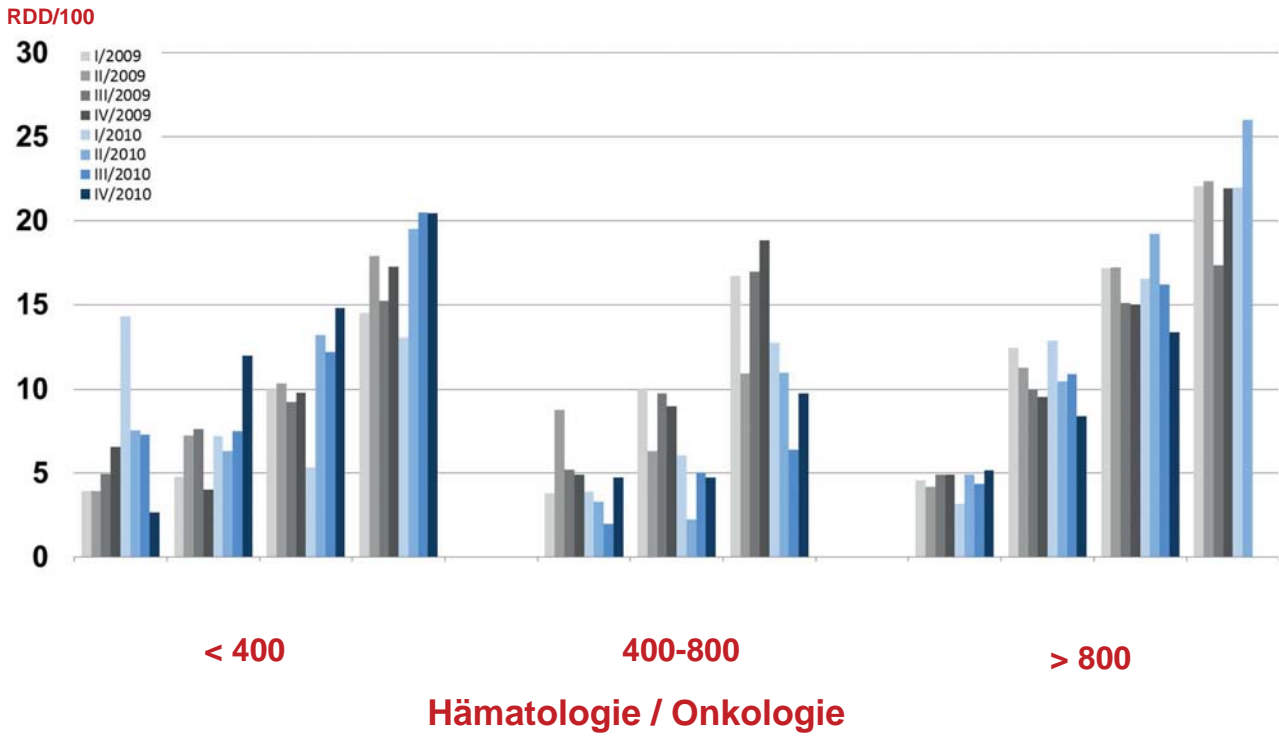
Breitspektrumpenicilline

RDD/100

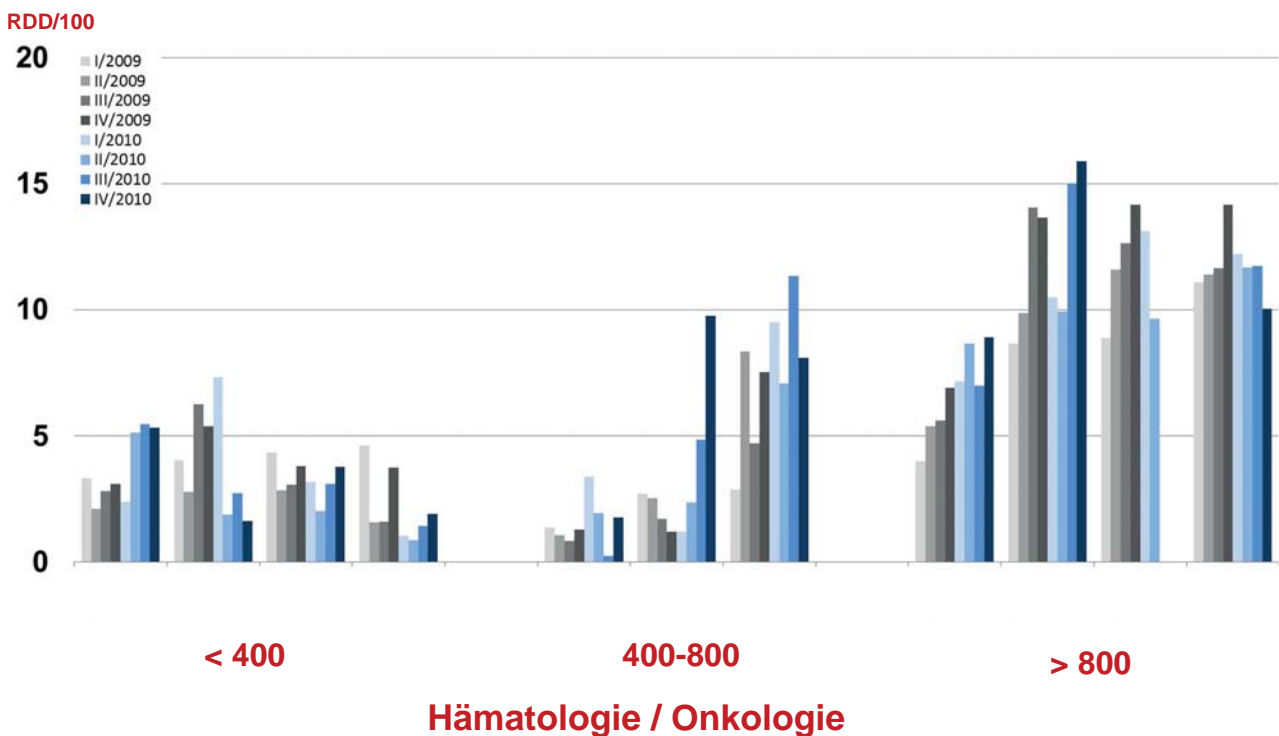


Hämatologie / Onkologie

3. Generations-Cephalosporine

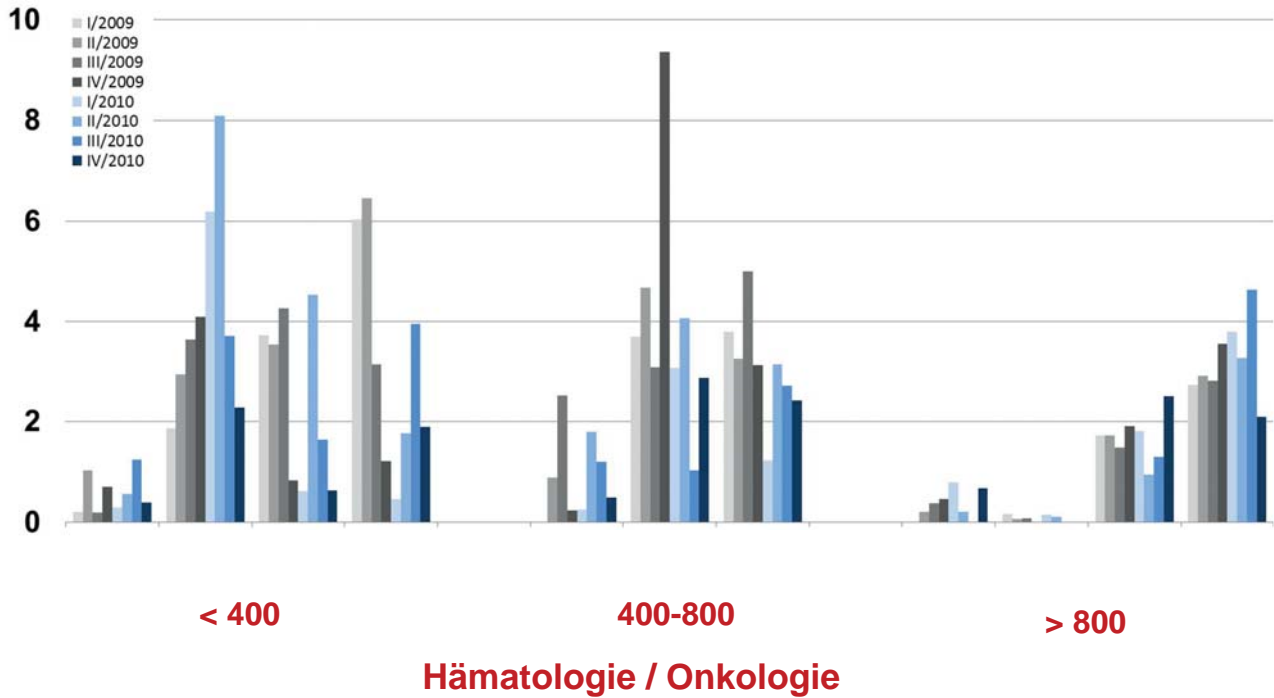


Carbapeneme



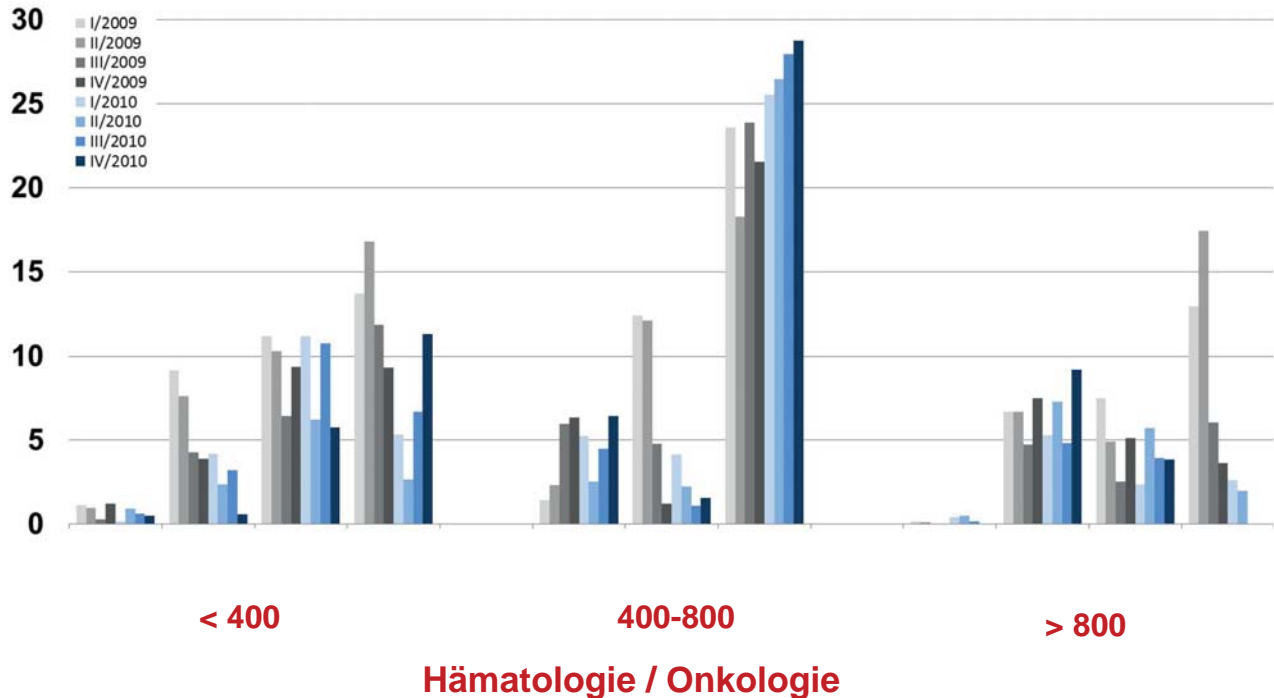
1./2. Generations-Cephalosporine

RDD/100



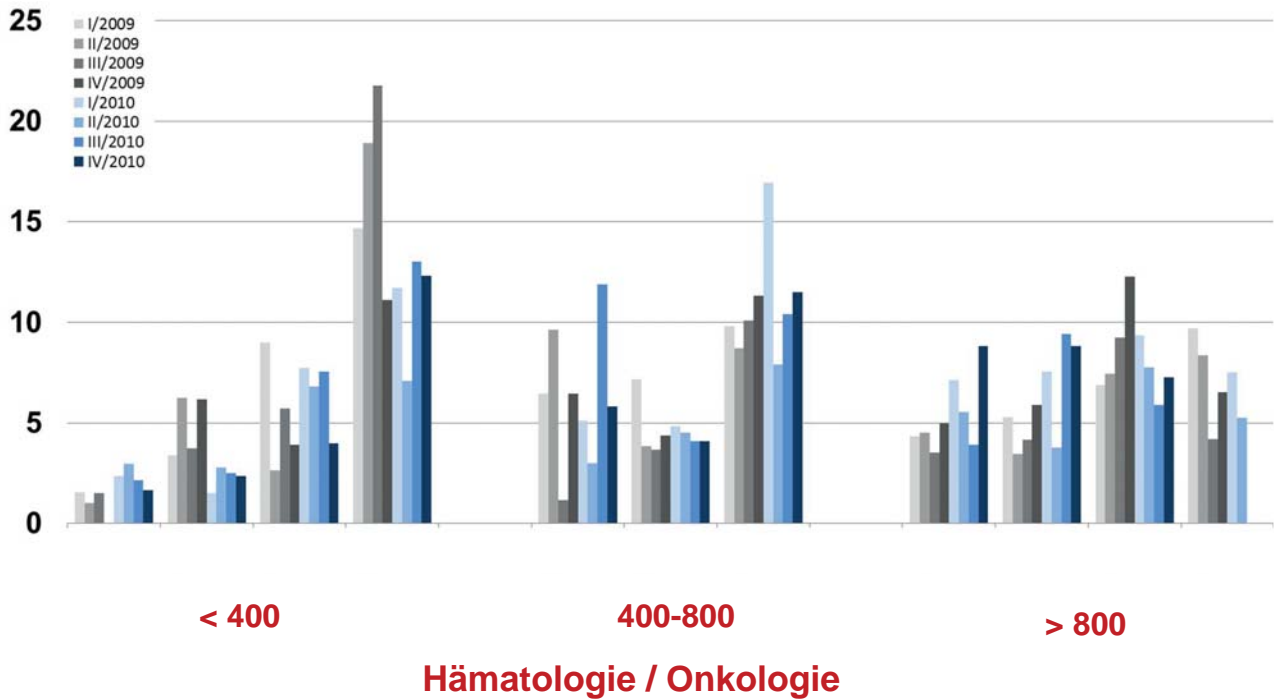
Aminopenicilline/BLH

RDD/100



Makrolide und Clindamycin

RDD/100



Antimykotika systemisch gesamt

RDD/100

